

NEW STYLE TUNIC.

BY EMILY H. MAY.



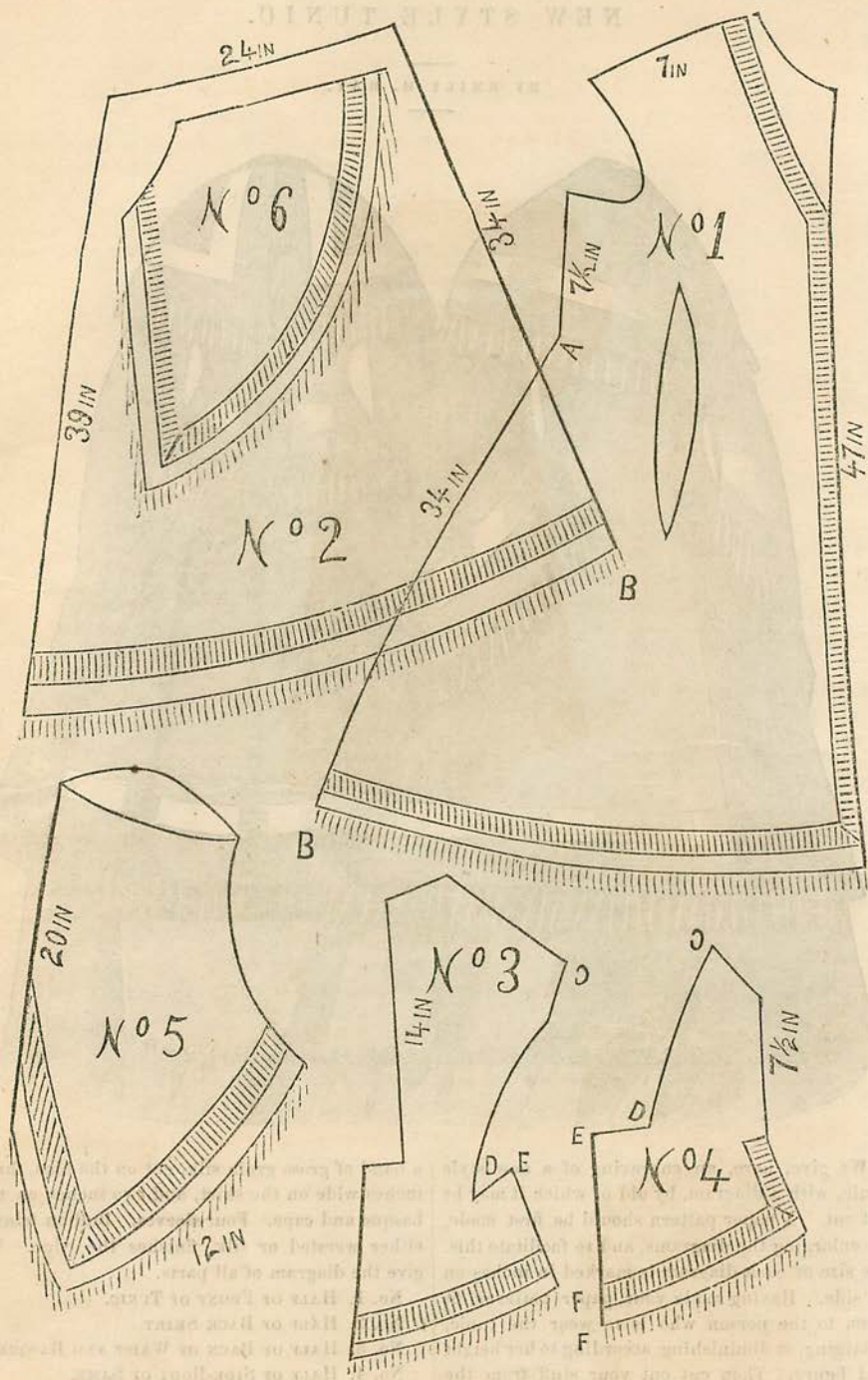
We give, here, an engraving of a new style tunic, with a diagram, by aid of which it may be cut out. A paper pattern should be first made, by enlarging the diagrams, and to facilitate this, the size of each diagram is marked in inches on its side. Having made your paper patterns, fit them to the person who is to wear the tunic, enlarging, or diminishing, according to her height and figure. Then cut out your stuff from the

This tunic is of cashmere, and trimmed with

a band of gross grain silk, cut on the bias, three inches wide on the skirt, and two inches on the basque and cape. Four sleeves. Bullion fringe, either worsted or silk, finishes the edge. We give the diagram of all parts.

- No. 1. HALF OF FRONT OF TUNIC.
- No. 2. HALF OF BACK SKIRT.
- No. 3. HALF OF BACK OF WAIST AND BASQUE.
- No. 4. HALF OF SIDE-BODY OF SAME.
- No. 5. SLEEVE.
- No. 6. CAPE.

DIAGRAM OF NEW STYLE TUNIC.



As we give back and front view of the tunic, Large buttons of the material, over moulds, are it will be easily put together from the diagram. used for the front.

In the front of the number we give a front and back view of a boy's overcoat of gray cloth, or mixed tweed. It is double-breasted. The flap has two rows of braid stitched on, and the buttons are placed between. On the opposite side a similar design is placed to correspond. The middle of the back is done in the same style to simulate a slash at that place. At the waist, a band two inches wide buttons in the middle. This may be left out if desired. Coat sleeves, with a turned-back, pointed cuff—suitable for a boy from six to eight years. One and a quarter yards of cloth will cut this coat.

These are the most noticeable styles, for ladies

and children, that have come out since our last number was issued. It is our aim, in this department, to select and describe such, so that any lady can make them for herself, or have them made up under her supervision. We give only what are really new and elegant. Our subscribers may rely on always receiving in "Peterson," the real Paris fashions, and the most select and latest even of those. This magazine not, as so many others are, merely an advertising vehicle to work off the old stock of wholesale dress-makers and dealers in our Atlantic cities. We have no object to serve, except to give the latest and best fashions.

THE NILSSON SACQUE.

BY EMILY H. MAY.



We give, this month, an engraving and diagram of a new style sacque, which has been called the Nilsson Sacque, in compliment to the celebrated Swedish prima donna, whom many of our readers may have heard.

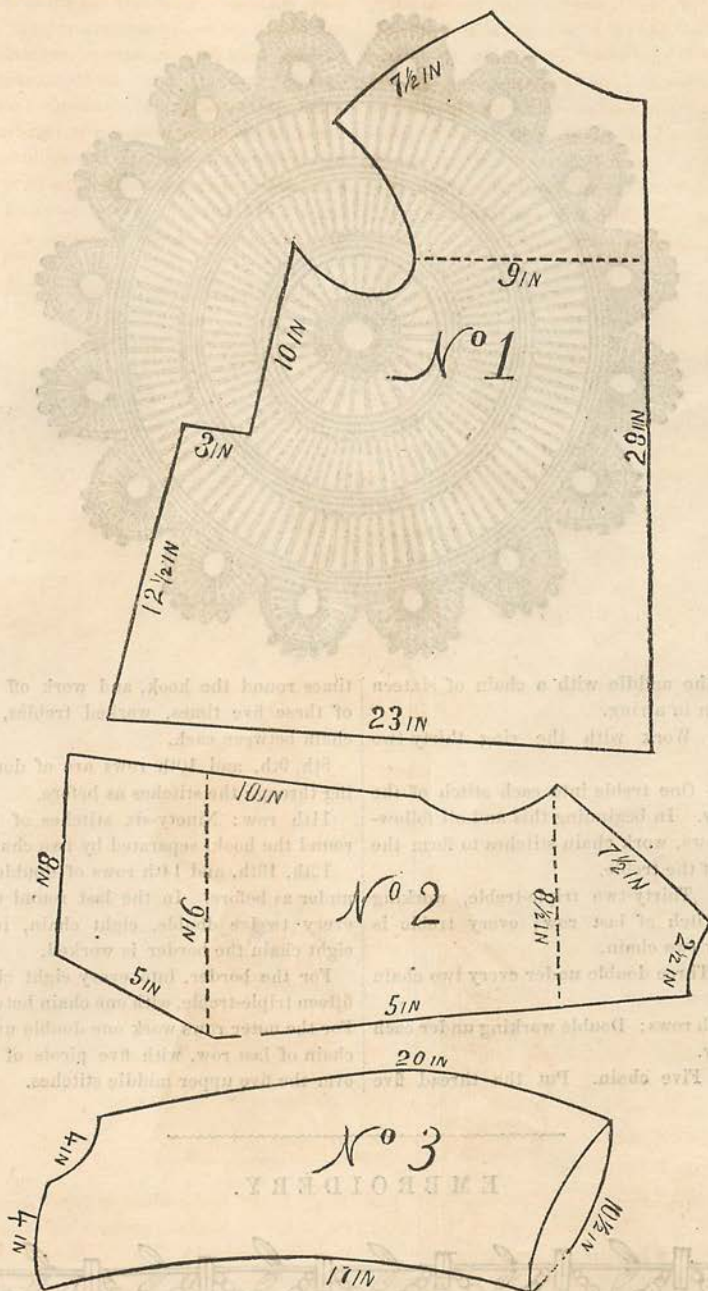
This sacque can be made of black cashmere, *Drap d'ete*, or fine habit-cloth. It is orna-

mented with embroidery in black silk, to which is added a simple pattern of braiding, with narrow, silk braid, forming the border. Heavy saddler-silk fringe completes this novel and handsome garment. We may add, that the entire ornamentation for this sacque may be done in braiding, if preferred. The heavier

the design, the more elegant, of course. An inter-lining, slightly wadded with wool, should be added for winter wear; but it should also be made separate, so as to be easily removed as

warmer weather approaches, or as may be otherwise convenient.

We also give the diagram, from which it may be cut out.

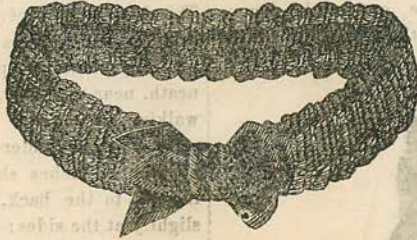


No. 1. HALF OF FRONT.
No. 2. HALF OF BACK,
No. 3. HALF OF SLEEVE.

Altogether, this is the most stylish, and will be the most popular, sacque, that has come out this winter.

CHILD'S CRAVAT: CROCHET.

BY MRS. JANE WEAVER.



MATERIALS: Blue and white Berlin wool, bone crochet hook, ribbon, for bow.

With blue wool make a chain of ten stitches, work, only on one side, three chain in each row for the first treble, and one treble in each suc-

ceeding chain. Work the length required to go round the throat; for the edge, with white wool, work into each edge-stitch, one double, one treble, one double-treble, one treble, and again one double.

SACQUE FOR A LITTLE GIRL.

BY EMILY H. MAY.

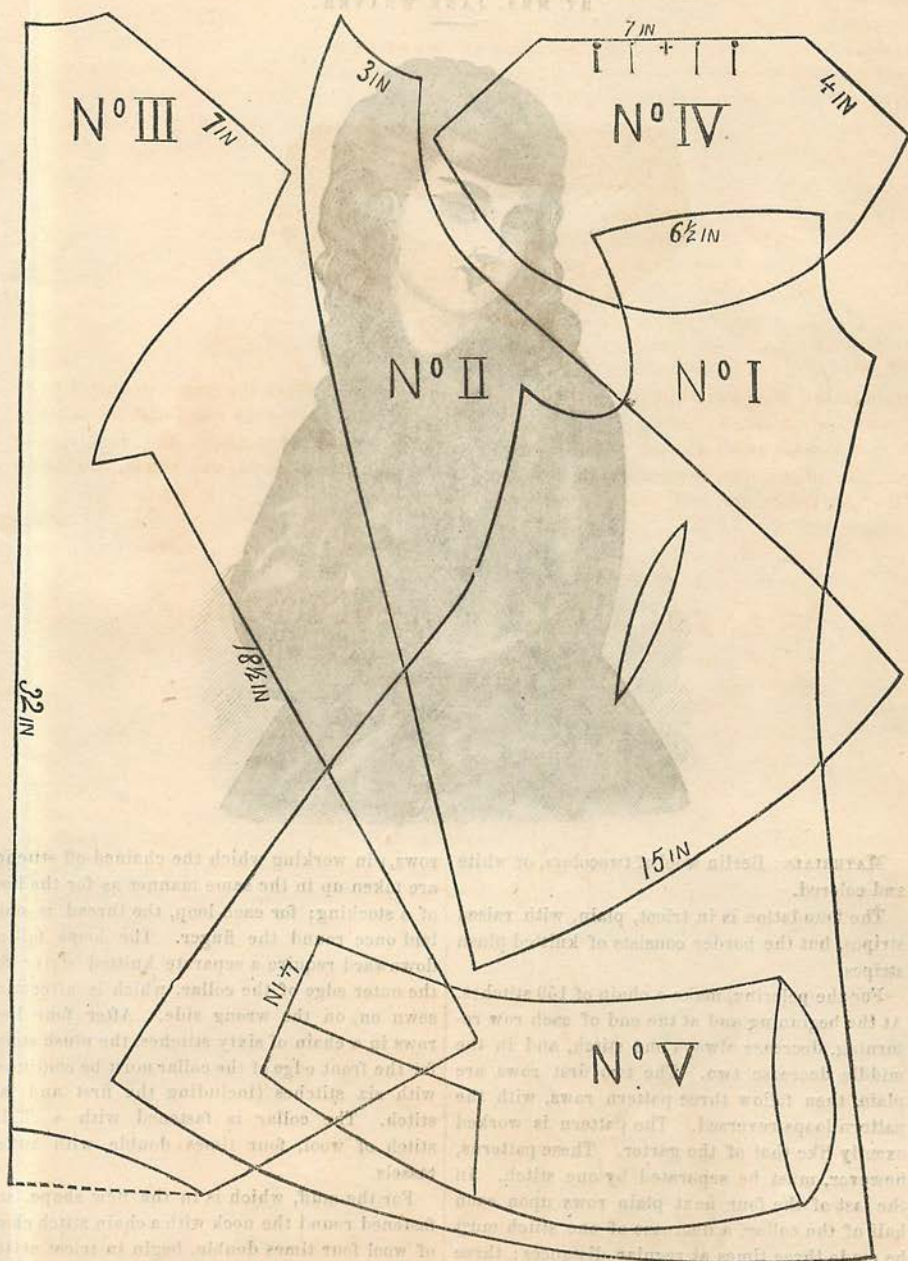


We give, this month, a new and pretty sacque for a little girl about twelve. The material may be chestnut-colored cloth or cashmere. It fits closely to the figure in the back, as will be seen,

and terminates there in a small plaited basque. It is ornamented with a gimp and fringe trimming. We give, also, a diagram by which it may be cut out.

No. 1. FRONT OF SACQUE.
No. 2. SIDE-PIECE.

No. 3. BACK.
No. 4. BASQUE.



No. 5. SLEEVE.

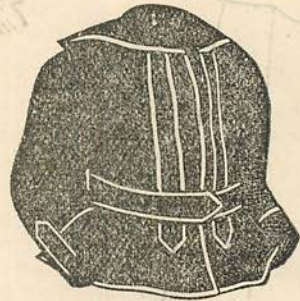
If made of cloth, it should be of a light fabric,

{ suitable for spring; but cashmere is cheaper and
more appropriate for this season of the year.

any amount of washing; suitable for walking, house, or traveling. Brown alpaca braid trims very prettily, or even black. There is a rolling-collar, open in front, and worn over a tiny chemisette. Five yards of linen, at thirty-seven to forty cents, and a piece of alpaca braid, at seventy-five cents, will make this little costume.

We conclude with a boy's flannel sacque. This is good for a complete suit, with Knickerbocker pants, being made of dark-blue flannel, and trimmed with white linen braid, put on as seen in the pattern. It is simply a loose sacque, belted in at the waist, and with a broad, sailor collar. Trim the pants with the braid down

the outside seams, adding three large pearl buttons at the knee.



THE GREEK PALETOT.

BY EMILY H. MAY.



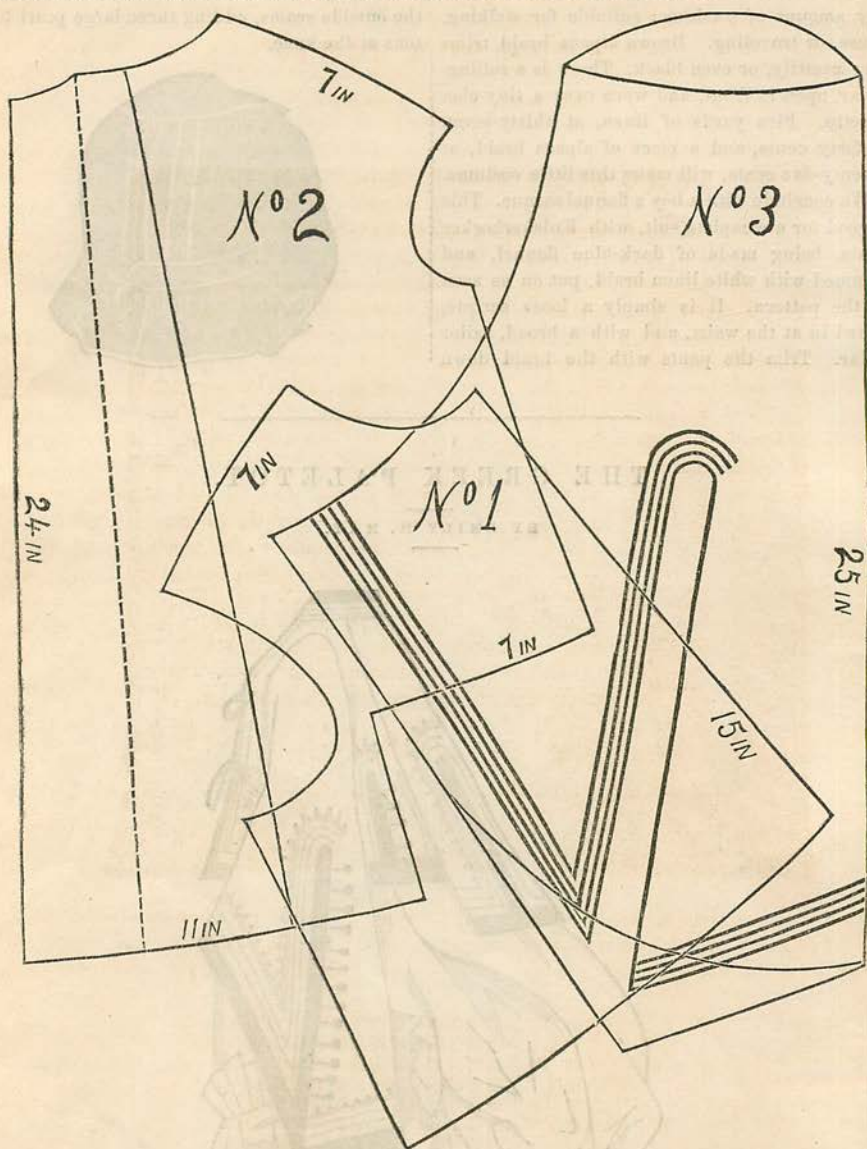
An opera-cloak, or wrap, made of white cloth, or cashmere, and trimmed with velvet ribbon, braid, and buttons, as seen in the illustration. It consists of three pieces, viz:

- No. 1. HALF OF FRONT.
- No. 2. HALF OF BACK.
- No. 3. SLEEVE.

These pieces are engraved in the diagram on the next page, the dimensions being given, in inches, marked on each piece.

A hollow plait is laid in the back, and is indicated by the dotted line.

The sleeve is very large, forms points in the back, and is trimmed like the rest of the cloak.



TIDIES IN DARNING AND CROCHET.

BY MRS. JANE WEAVER.

In the front of the number, we give two new patterns for tidies, one being in crochet and one in darning. The crochet pattern is for a small tidy. Or the design may be used for a square to work up into a counterpane. The other pattern is for a tidy in darned netting. We are continually asked for patterns of this kind. One of the very prettiest patterns in netting was the colored one, for curtains, in our March number. We have still several very beautiful ones to give.

EVENING POLONAISE.

—
BY EMILY H. MAY.
—



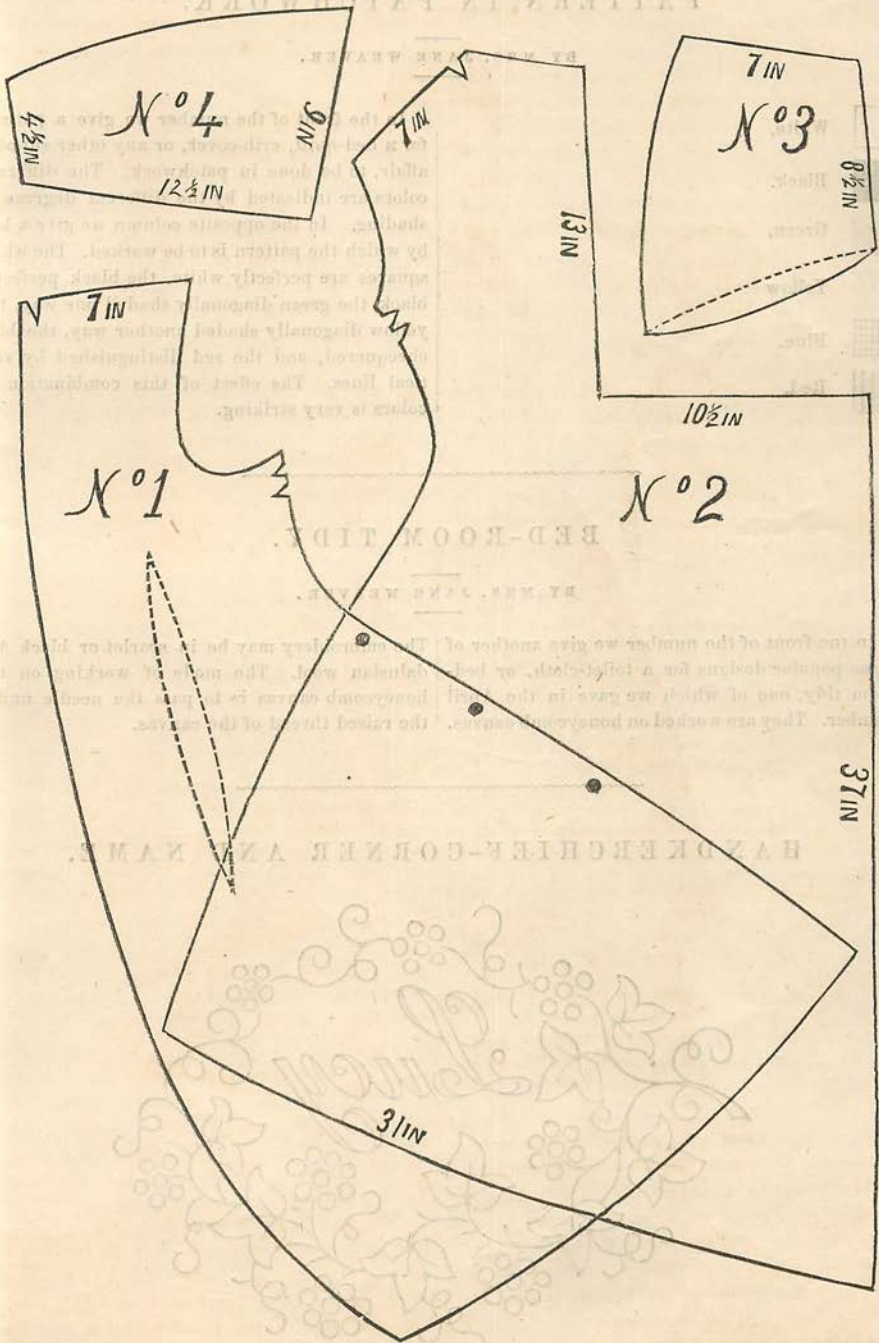
We give, this month, an engraving of one of the polonaise dresses so fashionable this season. Our pattern may be made up in either silk, gauze, grenadine, or figured tulle, and trimmed with lace, plaitings, or ruches. Our model is black figured net, edged with black lace, and rose-colored satin bands above; maize satin and black velvet also look well for trimmings.

The pattern consists of four pieces, viz :

- No. 1. FRONT.
- No. 2. BACK.
- No. 3. SLEEVE.
- No. 4. RUFFLE OF SLEEVE.

The joining of front and back is indicated with one notch on the shoulder and two notches under the arms, and these pieces must be joined before draping. Three punched holes will be found in the front; these show where the tunic

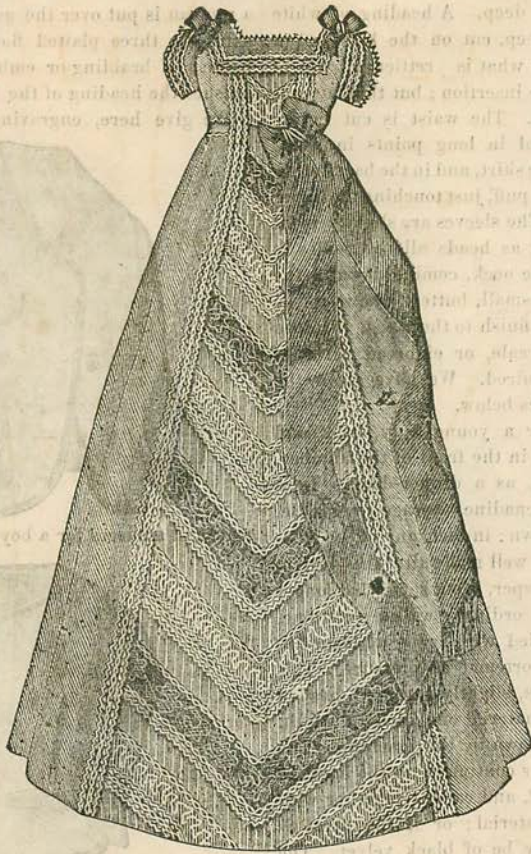
is to be draped. The second hole is to be lifted can be plain or puffed to the elbow, and a ruffle to the first, and the third to the second. The is added. Half of the ruffle only is given in our piece that projects from the back is to be laid in model. This polonaise also looks well in white



double plaits at the waist. A bow is added on *Algerienne*, edged with Thibet fringe. Nothing the waistband, both back and front. The sleeve } could be prettier for the coming season.

We also give, in the front of the number, two pretty designs for infants' dresses. These may be made from the illustrations, without further description. They are patterns that will always be found elegant and useful.

We close with a very elegant infant's robe, rather more costly than the articles usually given in this department; but if there is anything on which a mother thinks it excusable to be extravagant, it is on a pretty robe for her baby.



DRESS-BODY.

BY EMILY H. MAX.

We give, on the next page, a diagram for a dress-body, with a sacque-opening in front, suitable either for a dinner-dress or an evening house-costume.

This stylish dress-body is high at the back, and is cut out to form an open square in front. The waist is a good deal lengthened all round, (en

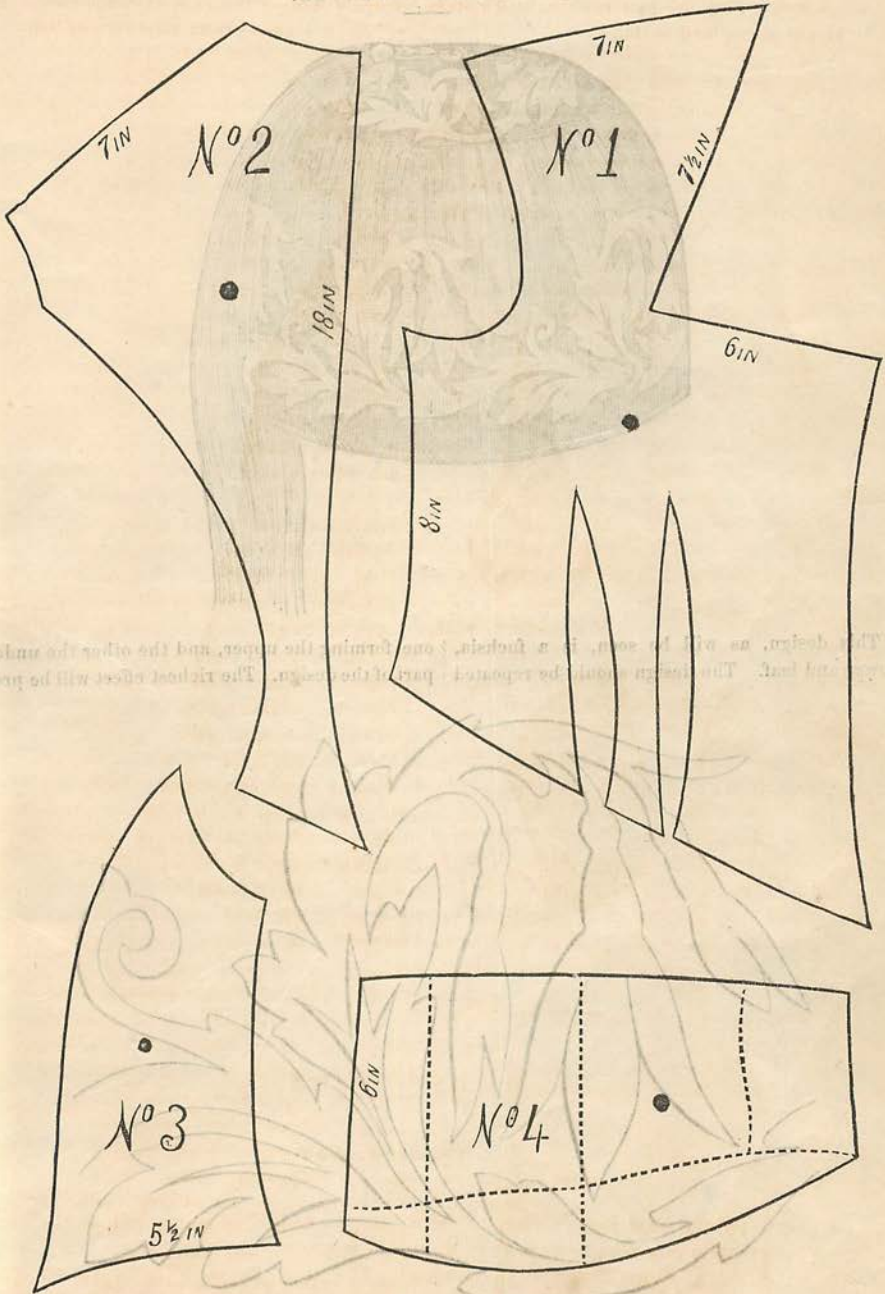
basque,) and forms points both at the back and the front.

The short sleeve is to be fullled along the straight pricked lines, so as to form rows of bouillons or puffings.

The pattern is given complete, and consists of four pieces, viz.,

No. 1. FRONT.
No. 2 BACK.

No. 3. SIDE-PIECE.
No. 4. SLEEVE.



This is a pattern which is quite fashionable, being simple, so that it can be made at home, if this season, and which has the advantage of more convenient.

TABLE-COVER CORNER.

BY MRS. JANE WEAVER.

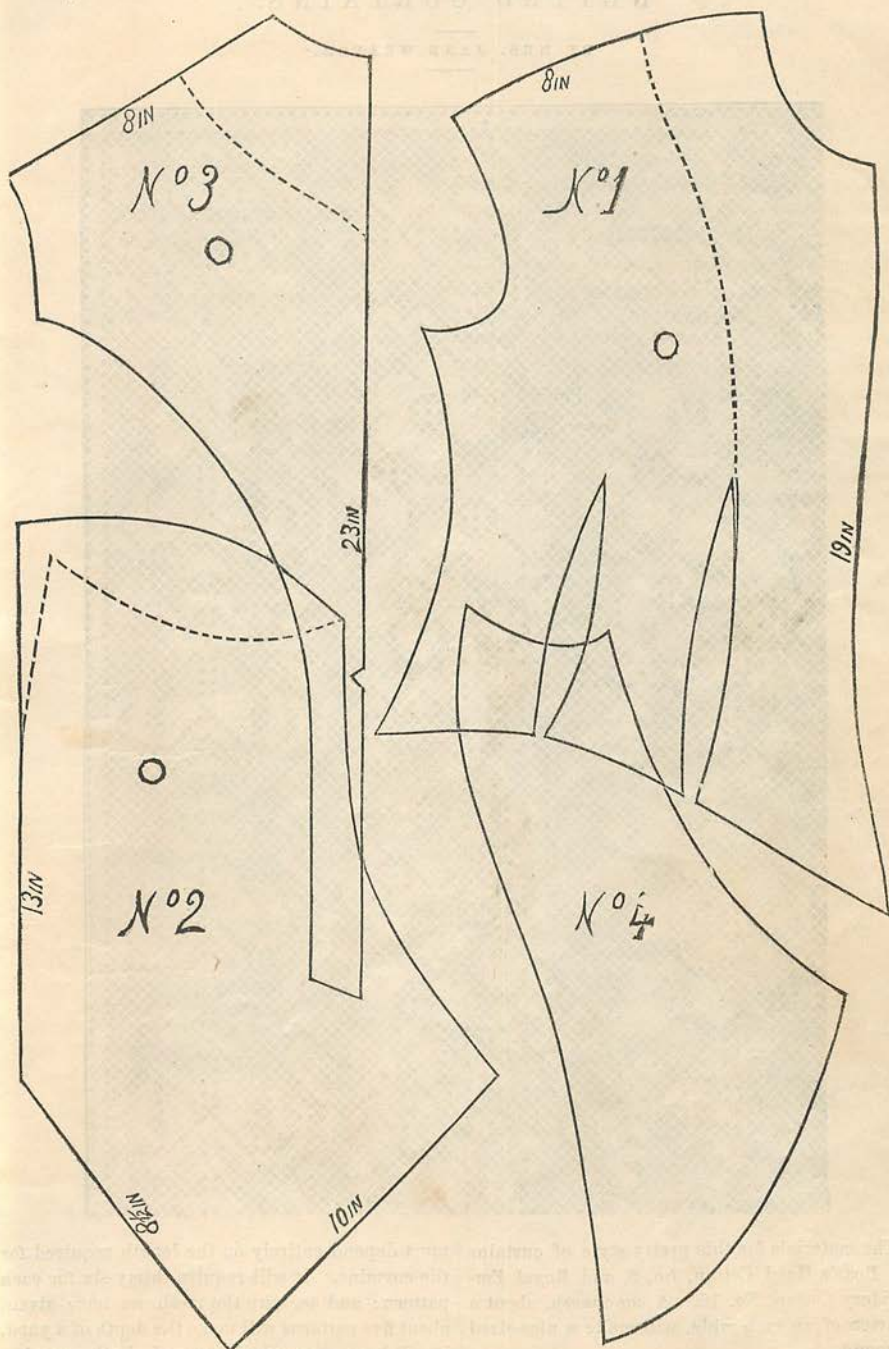
In the front of the number, printed in colors, we give a new and pretty design, in application, for the corner of a table-cover. We give both the reduced and full-sized corners. This charming design is of ivy-leaves, as will be seen, and is worked with white, black, or colored edges, and cording-stitch stalks, veins, and tendrils. These covers may be finished with fringe, or with an embroidered border, such as is shown in our smaller illustration. We also give a monogram for the corner. The letters are L. P., but any others may be substituted.

CORSAGE A GILET.

BY EMILY H. MAY.



This new and stylish affair, which is a dress-body with waistcoat front, called a *CORSAGE A GILET*, consists of a front, side-piece, back, and sleeve. It has no seam at the waist, and the basques form deep points at front, are narrow at the sides, and again deepen out to the back, where they are left open to the waist, so as to display the *bouffant*, or group of bows, worn underneath. The sleeve is wide at the wrist, and is left open at back of arm as far as the elbow. The middle, or waistcoat portion of the fronts, should be covered with silk of another color, or a darker shade; and this waistcoat, or "*Gilet*," is carried over the shoulder, terminat-



ing in point at the back of the neck, as shown by the lines of picking on the patterns.

We give, here, a diagram by which to cut out the corsage, which is for a lady of the ordinary size.

- No. 1. FRONT.
- No. 2. SLEEVE.
- No. 3. BACK.
- No. 4. SIDE-PIECE.

Of course, enlarge these diagrams.

SOFA-BOLSTER IN LOOP-KNITTING

BY MRS. JANE WEAVER.

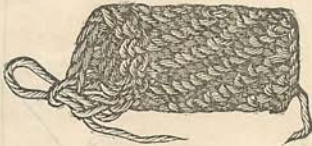


Loop-knitting is worked as follows:—Put the needle in the first stitch, and wind the wool round the two fingers of the left hand three times, always bringing it round the needle, and draw the four loops through every stitch. Six stripes are to be worked of six squares following each other with wool taken three times double. On our pattern the stripes are of plain, light, and dark squares arranged sloping, half being white and half of threads mixed in black and two maize shades (wool and floss silk;) but any combination of color can be taken. The bolster before us has dark-brown squares, each nine loops wide and nine deep. The squares divided in color require, however, ten loops in depth, in order that they may be begun with a complete three-colored row, and end with a complete white row.

KNITTED CORD.

BY MRS. JANE WEAVER.

Materials: Evans' Boar's-Head cotton, No. 4, four steel needles, No. 16.



Cast eighteen stitches on three needles, and knit two plain rows round, then thread forward: knit two together, knit one, and repeat until sufficiently long.

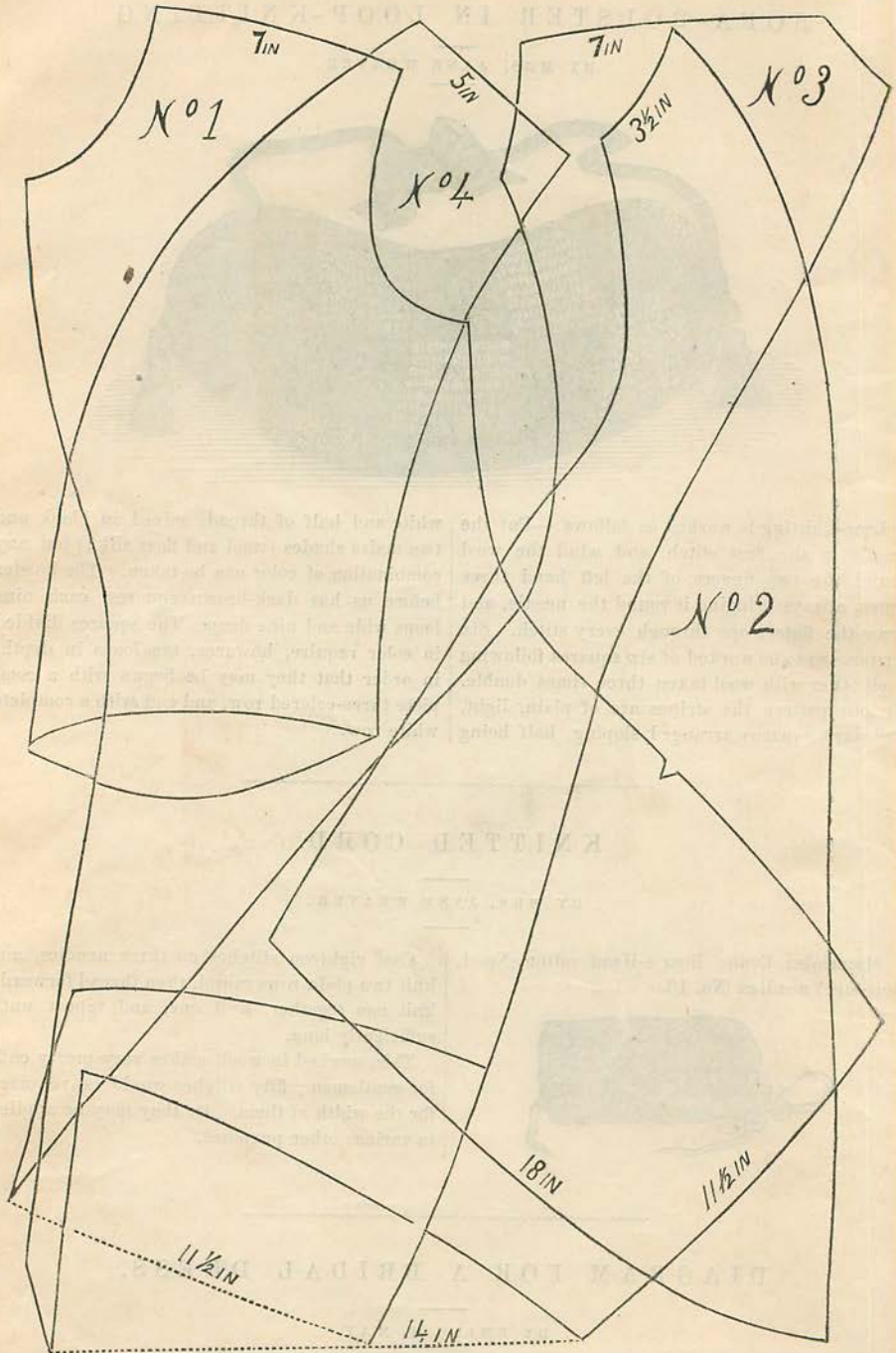
This, worked in wool, makes very pretty cuffs for gentlemen; fifty stitches would be required for the width of them. Or they may be applied to various other purposes.

DIAGRAM FOR A BRIDAL DRESS.

BY EMILY H. MAY.

In the front of the number we give an engraving of a new and very beautiful Bridal-Dress, and add here a diagram by which to cut it out.

A detailed description of the dress will be found in its proper place, at the end of the number, in the article "Fashions for August."



The dress consists four pieces, as will be seen from the diagram.

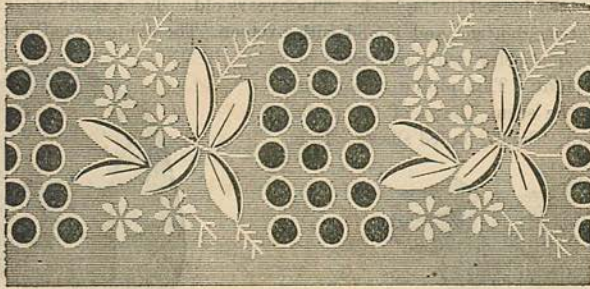
No. 1. FRONT OF TUNIC.

No. 2. SIDE-PIECE.

No. 3. BACK OF TUNIC.

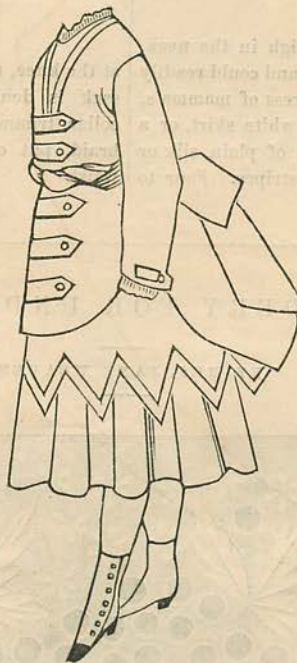
No. 4. SLEEVE.

These are both simple and attractive, requiring but little application, and we are sure need only to be worked to make them universally acceptable to our numerous readers.



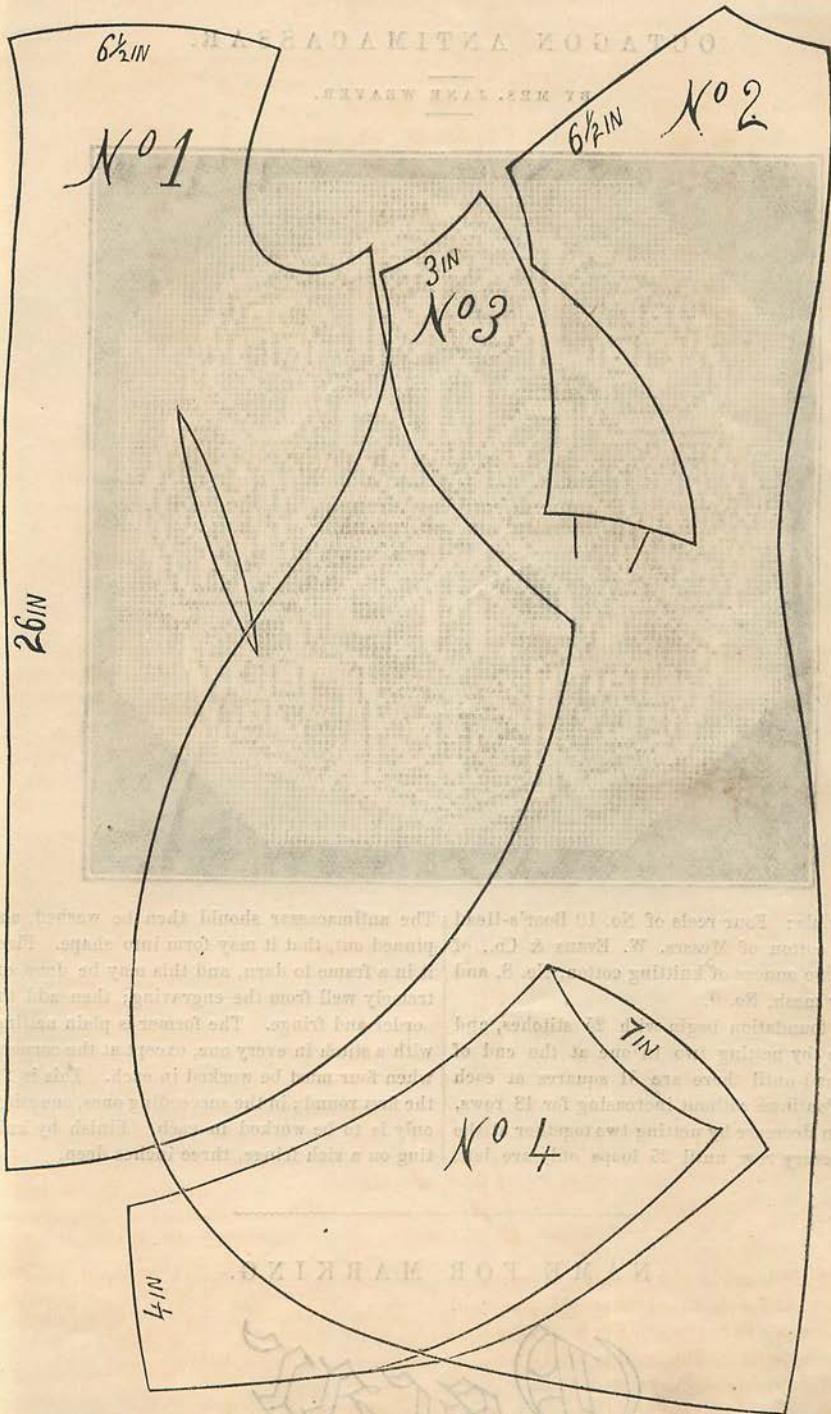
TUNIC FOR A LITTLE GIRL.

BY EMILY H. MAY.



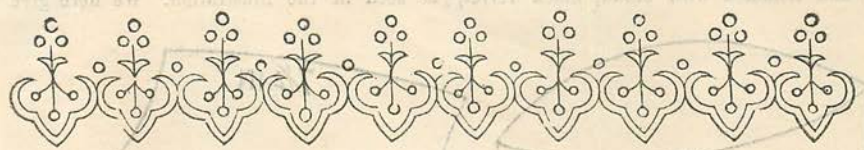
This tunic is made of blue silk, or mohair, or cashmere, and is trimmed down the front with bias bands, which are fastened by buttons covered with the material. The front is slightly cut up at the side, giving the effect of an apron. Where the back and side-piece join, there is a hollow plait. The sleeve is trimmed with bias bands and buttons like the front. The sash is of blue ribbon. We give, on the next page, a diagram by which to cut this tunic out, viz :

- No. 1. FRONT OF TUNIC.
- No. 2. BACK OF TUNIC.
- No. 3. SIDE-PIECE.
- No. 4. SLEEVE.



The petticoat, which is laid in large plaits, and (engraving,) may be made of any material ; but the skirt, which is cut in points, (as seen in the engraving,) would be most elegant if made of the same material.

EDGING. The ends of which are turned in and finished with velvet. The trimmings with broad black velvet are seen in the illustration. We have here



THE DOLMAN.

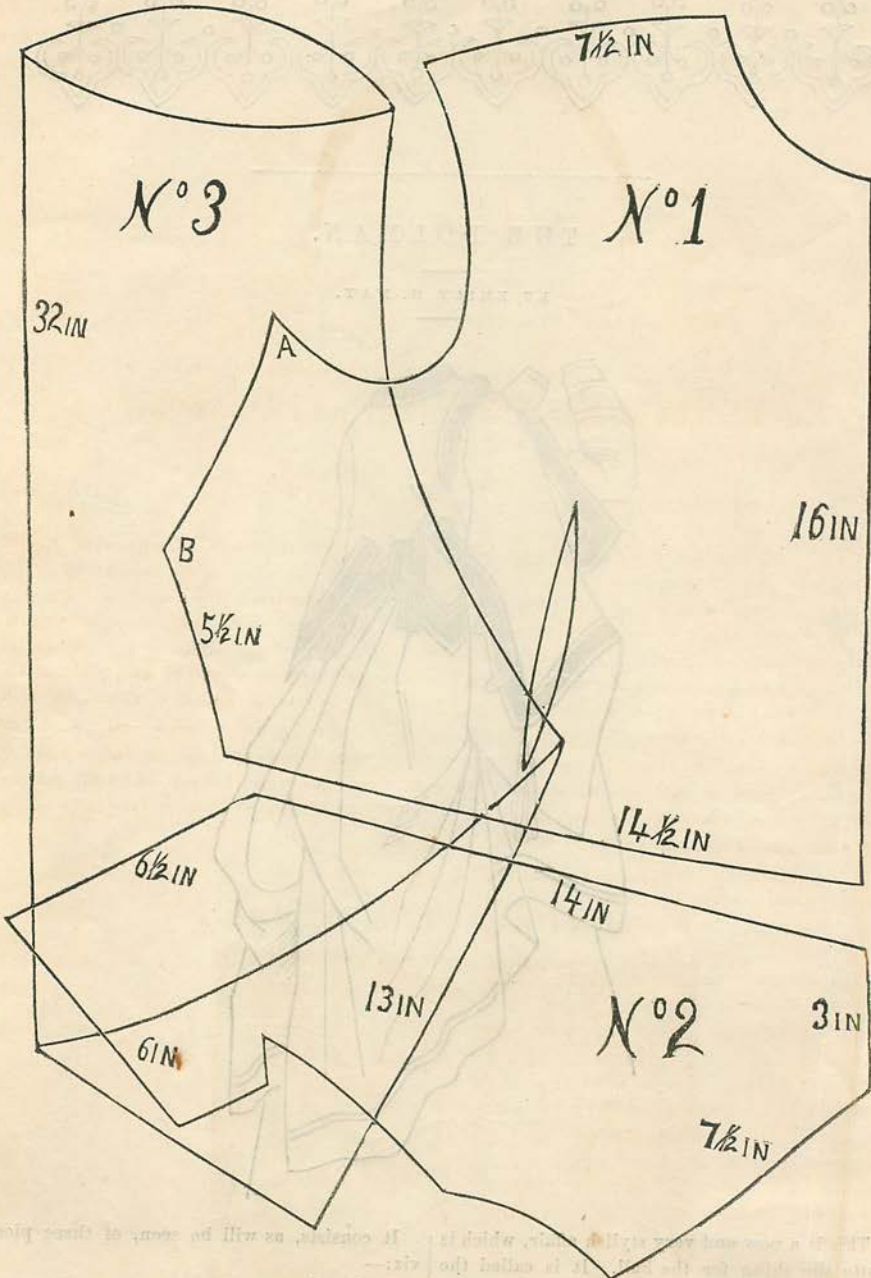
BY EMILY H. MAY.



This is a new and very stylish affair, which is quite the thing for the Fall. It is called the Dolman, because of its resemblance, in many respects, to the Hungarian Hussar jacket of that name.

It consists, as will be seen, of three pieces, viz:—
No. 1. FRONT.
No. 2. BACK.
No. 3. SLEEVE.

It is made of white cashmere, lined with white silk, and trimmed with broad, black velvet, } large, cut in a point, and trimmed with velvet, }
 silk, and trimmed with broad, black velvet, } as seen in the illustration. We here give a



finished on either side with white silk pipings. The bottom is cut so as to form two small basques on either side, as it were. The sleeve is quite

diagram of the garment, which will enable the maker to cut it out correctly and make a perfect fit.

and facing the one just described, we give other articles for children. Among them are an Infant's Hood and Wrapper, made of pink flannel, with a scalloped edge of button-hole work, and two rows of coral stitch in white purse-silk. Also a Boddice and Drawers for a child from three to five years old. Also an Infant's Flannel Jacket, which we recommend for children, who will not keep under the bed-covers. Also a Chemise, (half being given,) for a little girl from five to eight years old. Also an Infant's Bibb,

of which we give the back and front view; one being represented as made of fleecy pique, braided with star braid, and the sleeves and edge furnished with a narrow cambric ruffle; the other being represented as made of soft cambric, wadded and quilted, with a button-hole edge: the improvement in this Bib over the old-fashioned one, is that it has a sleeve which keeps it in place; and of the two materials, we prefer the fleecy pique, because it can be more easily washed than the wadded cambric.

A SLEEVELESS JACKET.

BY EMILY H. MAY.



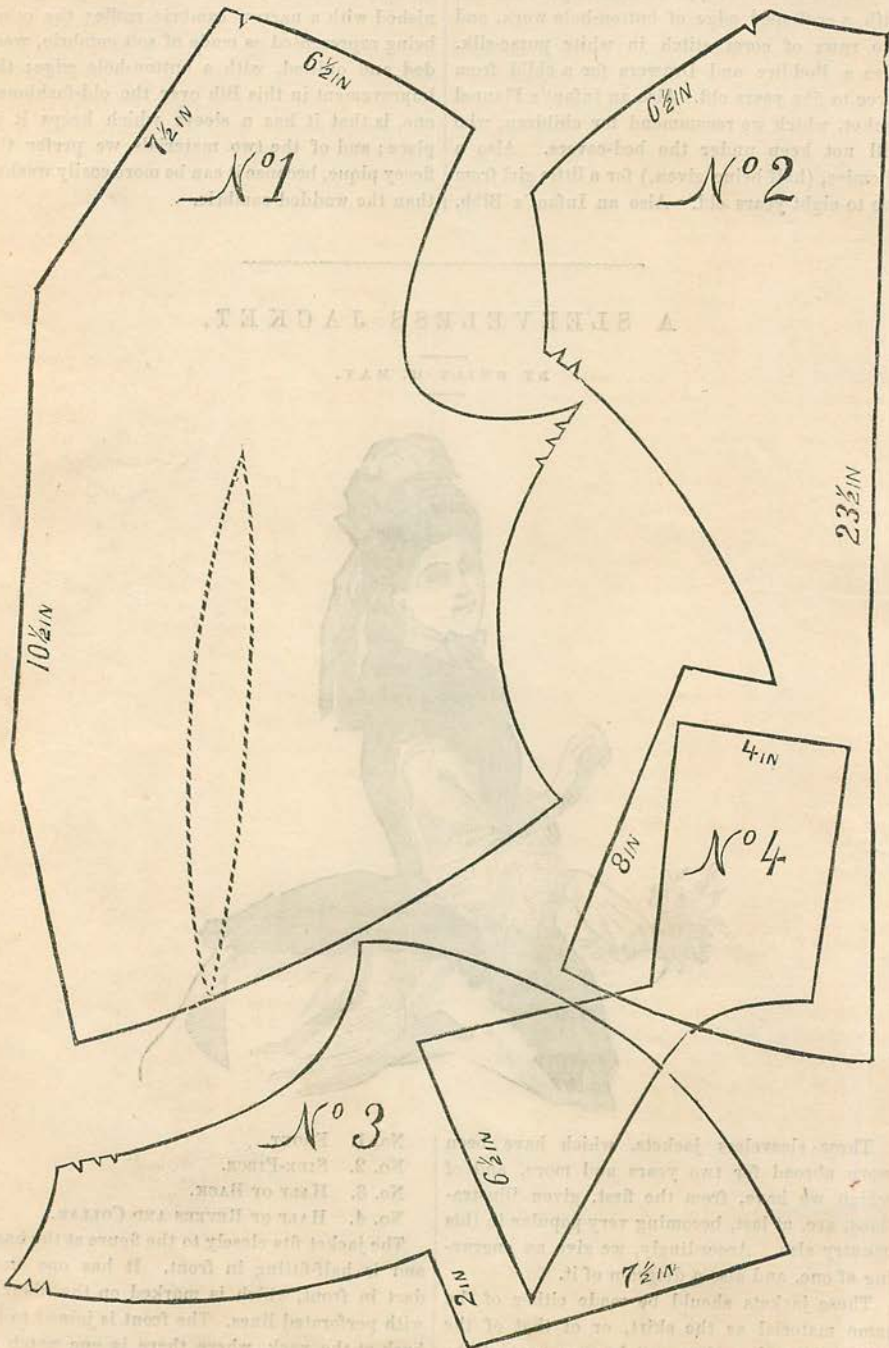
These sleeveless jackets, which have been worn abroad for two years and more, and of which we have, from the first, given illustrations, are, at last, becoming very popular in this country also. Accordingly, we give an engraving of one, and also a diagram of it.

These jackets should be made either of the same material as the skirt, or of that of the tunic; for unless they match some part of the dress, they look patchy, and are out of taste. Our pattern consists of four pieces, viz.

- No. 1. FRONT.
- No. 2. SIDE-PIECE.
- No. 3. HALF OF BACK.
- No. 4. HALF OF REVERS AND COLLAR.

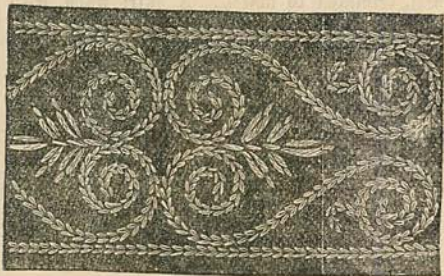
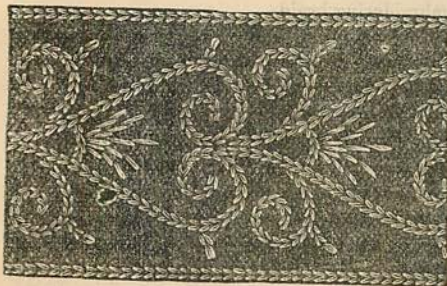
The jacket fits closely to the figure at the back, and is half-fitting in front. It has one small dart in front, which is marked on the diagram with perforated lines. The front is joined to the back at the neck, where there is one notch on the side of the diagram; two notches mark the back and side-piece, and three notches the seam.

under the arms. The basque at the back is full, { lated with trimming or made separate; in fact,
 the plaits being formed with the join. The collar } its addition at all is a matter of taste. The pat-



is of the sailor form, and the pointed end is the } tern is added, as it will serve for Polonaises and
 revers. The sailor collar can be either simu- } boddices, on which it is now frequently worn.

BORDERS IN CHAIN-STITCH.



Foundation is of satin or velvet. The chain-stitch should be worked in purse-silk of a lighter shade than the foundation, or in white. These are suitable borders for alternating with Berlin stripes for sofa-pillows, etc., and will always be found useful.

CASAQUE AND TUNIC.

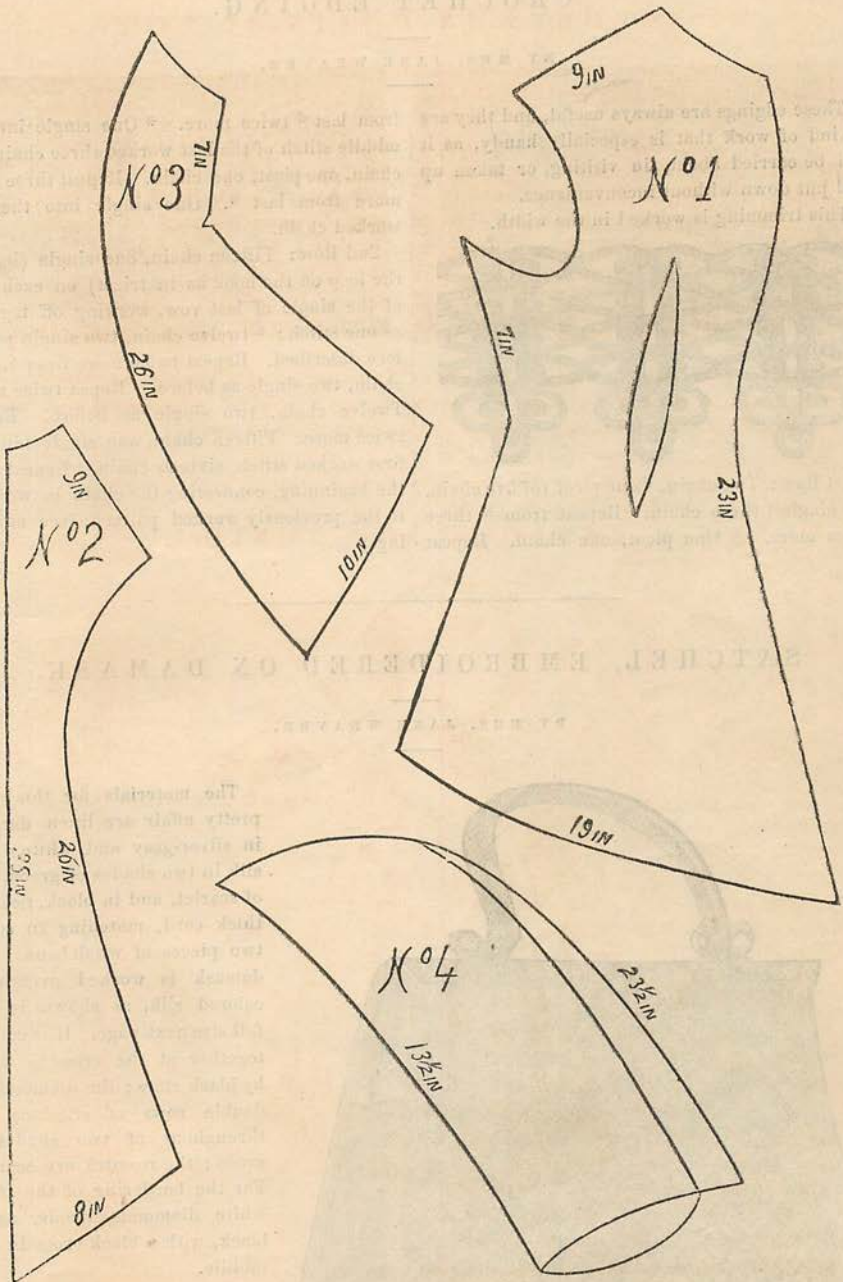


The tunic is of a darker shade, and cut straight round the bottom, and ornamented with a braided pattern, done in the same shade as the underskirt, either in silk, or fine, worsted, embroidery-braid, and edged with a knotted, or bullion fringe. The diagram is in four pieces, viz:—

- No. 1. FRONT OF CASAQUE.
- No. 2. HALF OF BACK.
- No. 3. SIDE-PIECE OF BACK.
- No. 4. SLEEVE.

The casaque is made of the light shade of cashmere, and is braided to correspond with the

tunic. There is an under-skirt to the casaque, } match. A side-plaiting of the darker shade of
made of the darker shade, and about four inches } cashmere may be substituted for the fringe, if



deeper all round than the casaque proper. The } preferred, or a bias-bound ruffle, four inches
shoulders and sleeves are braided and fringed to } deep.