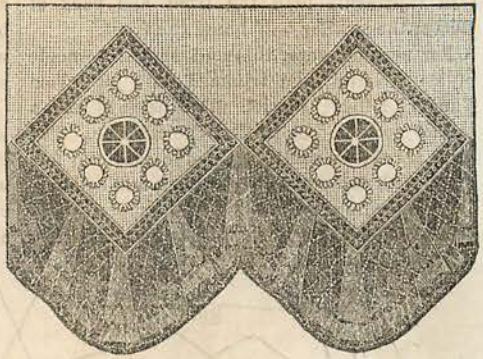


DESIGN FOR THE WORKED CHEMISE.

BY MRS. JANE WEAVER.

In the front of the number we give two new patterns for low-necked chemises. One, it will be observed, is quite plainly embroidered; the other, on the contrary, is very elaborately worked. In order, however, that ladies, who have time, may work this exquisite pattern for themselves, we give here a design, full size, for the ornamentation of the front, etc. By following this design, and working it in, as seen in the engraving of the chemise, any lady accustomed to fine embroidery, can, at a comparatively small cost, make a garment, which, if bought at a store, would cost enormously.



SAILOR KNICKERBOCKER-SUIT.

BY EMILY H. MAY.



In addition to the engravings of children's fashions, given in the front of the number, we print here an illustration of a "Sailor's Knickerbocker-Suit" for a boy from four to six years

old, accompanying it, on the next page, by a diagram, from which it may be cut out. We have so often given directions for enlarging these diagrams, and cutting out a paper pattern of the full size from them, that we deem it unnecessary to repeat them here.

This style of dress is very fashionable in Paris, at the present season, for boys. Our pattern consists of a jacket, with lapels in front, and a pair of Knickerbockers.

- No. 1. FRONT OF JACKET.
- No. 2. HALF OF BACK OF JACKET.
- No. 3. HALF OF SLEEVE.
- No. 4. ONE FRONT OF KNICKERBOCKER.
- No. 5. ONE BACK OF KNICKERBOCKER.

The front of the Knickerbocker may be distinguished from the back by being shorter, and the knee from the waist by being narrower. The outside seam of the Knickerbocker must be joined to within five inches of the top. The inside seam, which is sloped, must be joined as far as the point. Each leg is gathered into a band, which is worn below the knee. The legs are made first, then joined together down the center of both back and front. A band, two inches wide, must be added, according to the size of the waist; one half of the band is for the front, the other half for the back; the Knickerbockers fasten at the sides. Pockets may be added at the sides, if desired. The back and front must each be pleated with three small pleats into the band.

The jacket is turned back in front with lapels,

and should be stitched at the top into a narrow, straight collar. The lapels are made of the same material as the jacket. The sleeve pattern represents both the front and back of sleeve; the smaller half being the front.

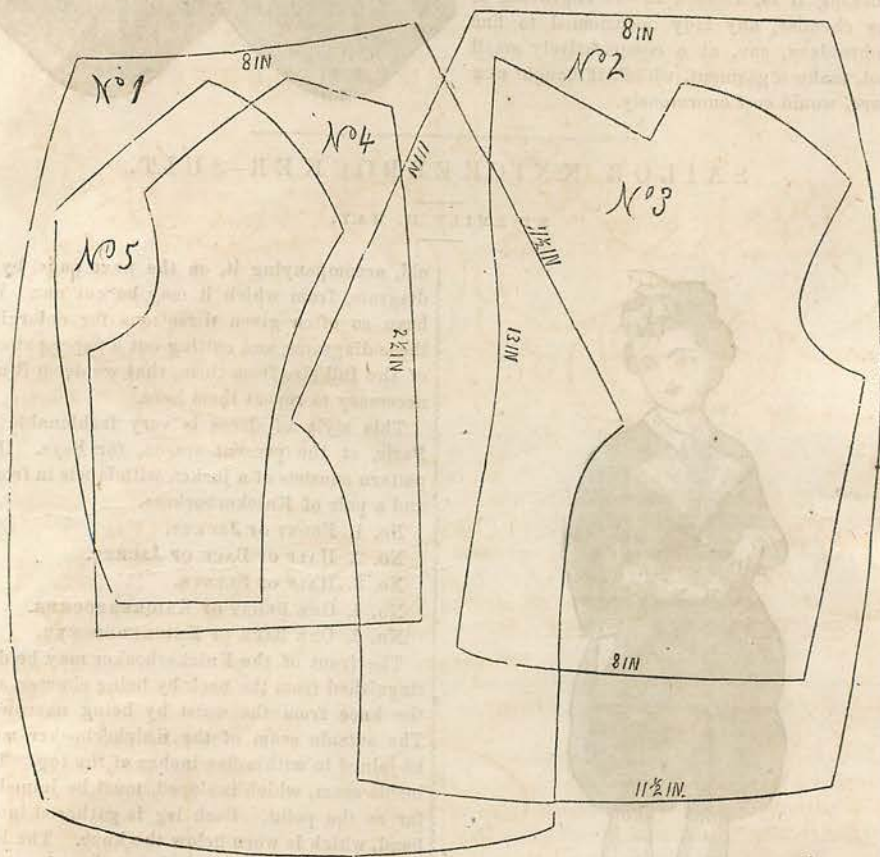
For evening wear, this suit should be made of black velvet, and trimmed with jet "Tom Thumb" fringe; scarlet silk stockings and a scarlet neck-tie completing the costume. The shirt should be made either of cambric or fine linen, with full embroidered front and collar.

For morning wear, cloth is the more appropriate material; a linen shirt, with plain linen

collar, should replace the embroidery; bright blue, violet, or scarlet neck-tie and stockings.

Our sketch represents a boy wearing this costume. The small cap is of black velvet, bordered with Astrakan fur, and ornamented with a red feather; Polish kid boots with tassels, and red spun silk stockings.

We have seen several descriptions of cloth, which are suitable for this suit; the usual width is three-quarters of a yard, and three yards would be required. The tweeds occasionally run double-width; then, of course, half the above quantity would be found sufficient.



ORIENTAL SLIPPER IN COLORS.

BY MRS. JANE WEAVER.

In the front of the number we give a beautiful pattern, printed in colors, of an Oriental Slipper. The materials are 14 inches of black cloth; $1\frac{3}{4}$ yards each of broad silk braid, deep amber, scarlet, and white; a small quantity of bright cerise, blue, amber, and white floselle; 1 skein each of sewing-silk, black and bright cerise; 4 rows of steel beads, No. 7; a few chalk beads; a small piece of blue and bright cerise cloth for the pines.

more stitches, on which work thus: make 1, knit 2 together, repeat 3 times from *, knit 2. We shall no longer mention the 11 stitches on each side.

10th row: Knit plain 113 stitches.

11th row: Knit 4, * make 1, knit 2 together, knit 6, repeat 12 times from *, then make 1, knit 2 together, and knit 3.

12th row: (Left side.) Purl 2, knit 2 together, * make 1, purl 1, make 1, knit 2 together, purl 3, knit 2 together, repeat 12 times from *, then make 1, purl 1, make 1, knit 2 together, purl 2.

13th row: Knit 1, knit 2 together, * make 1, knit 3, make 1, knit 2 together, knit 1, knit 2 together, repeat from *. The end of the rows is like the beginning.

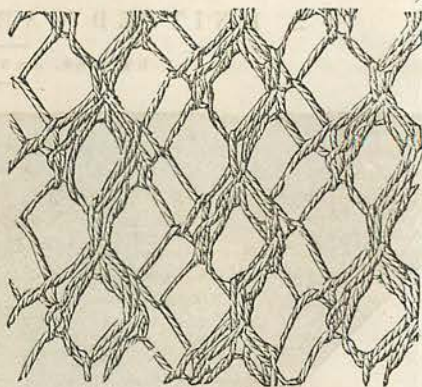
14th row: Knit 2 together, * make 1, purl 2, make 1, knit 2 together, purl 1, make 1, purl 3 together, repeat from *.

15th row: Knit 2, * make 1, knit 2 together, knit 1, knit 2 together, make 1, knit 3, repeat from *.

16th row: Purl 3, * make 1, purl 3 together, make 1, purl 2, make 1, knit 2 together, purl 1, repeat from *.

17th row: Knit 1, knit 2 together, * make 1,

knit 3, make 1, knit 2 together, knit 1, knit 2 together, repeat from *.



Repeat continually from the 14th to the 17th row, until you have thirty patterns complete. Knit 3 rows plain, repeat the insertion pattern again, then 3 more plain rows, sew the border on round the center and finish it off with three rounds of netting. The two first rounds are worked with the wool folded double, the third with the wool folded thrice on a larger mesh.

TRAVELING PALETOT.

BY MRS. JANE WEAVER.



We give, this month, a pattern for a new style traveling Paletot, which is easily made, with the assistance of the diagram on the next page.

This traveling Paletot is of cloth, trimmed with two rows of black velvet laid on flat. The garment closes straight in front, and it is open at the side. Under the opening is placed a gore of cloth, trimmed with three narrow velvets, which begins under the arm and widens as it descends to the bottom of the garment.

The sleeve has an elbow; it is long and half-tight at bottom. A cuff is simulated by three narrow velvets.

On the next page we give the diagram, by which the Paletot may be cut out.

No. 1. FRONT.

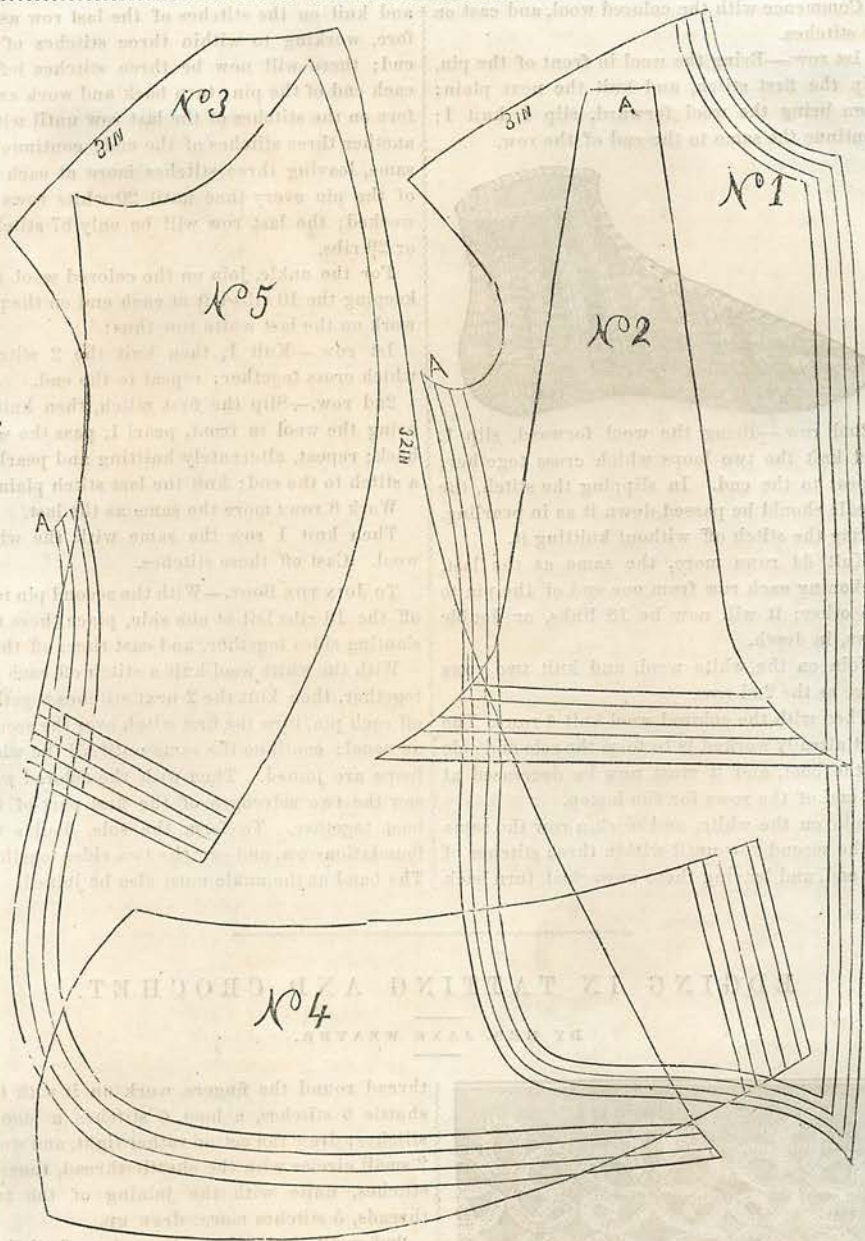
No. 2. THE GORE.

No. 3. BACK.

No. 4. FRONT OF SLEEVE.

No. 5. BACK OF SLEEVE.

To enlarge the diagram, measure the angles, and then make the sides as long as they are marked. Thus the back, in this diagram, is thirty-eight inches.



WINTER BOOT, IN KNITTING.

BY MRS. JANE WEAVER.

MATERIALS.—3 skeins of colored and 2 of white double Berlin wool, or 4-ply fleecy; a pair of knitting-pins, No. 12 Bell gauge; and a pair of cork soles.

These materials will make a pair of lady's boots suitable for wearing over a thin shoe, or they may be used for sleeping socks, omitting the cork sole.

overcast stitches on it, worked alternately with shaded red and green; the lightest part of the silk should not be used. The cross is of mauve and black.

Cover the three black stripes with the broader black velvet, and on the first make crosses with crimson silk, and a white bead between each; the second stripe is crossed with the gold twist; and on the third, a white cross and two straight threads of crimson, alternately. On the two small white stripes between them work a row of chain-stitch, in blue for one, and claret for the other.

Work a row of hem-stitch, with blue on the narrow scarlet stripe; edge it on both sides with the narrowest black velvet, stitched down with white beads.

THE BROAD WHITE STRIPES.—Tack the scar-

let velvet down the center of each, and make the crosses on it with two lines of blue silk, fastening it with a white bead in the center. Edge it with gold braid crossed with black silk; this leaves a white stripe on either side of the velvet, the first of which should be worked with two straight stitches of light green crossed with claret, and then the colors reversed. In the other white space, the three stitches nearest the edge are of dark green, with a French knot of amber in the center. The star is of mauve and light green, alternately reversing the colors.

When the whole is worked, it must be lined before fastening it to the frame, for which purpose it is as well to use a piece of the same ticking.

The frame should be ornamented with cord and tassels corresponding with the embroidery.

A SENORITA BODY.

BY EMILY H. MAY.



We give, this month, a pattern of a SENORITA BODY, rounded off in the front, and forming a large, square Postillion Jacket at the back, and a WAISTCOAT to be worn underneath: the style is shown on the two figures above, except that, as some ladies may not like the square form of waistcoat, we have given it with double points at the waist, (for which see diagram on

next page,) which will, we think, be most worn. The pattern is for a lady of medium height, measuring about $34\frac{1}{2}$ inches round the chest. We have given the pattern complete, consisting of back, side-piece, with its postillion skirt, front, sleeve, and the front of waistcoat, which is sewn in with the shoulder and side-seams of the body.

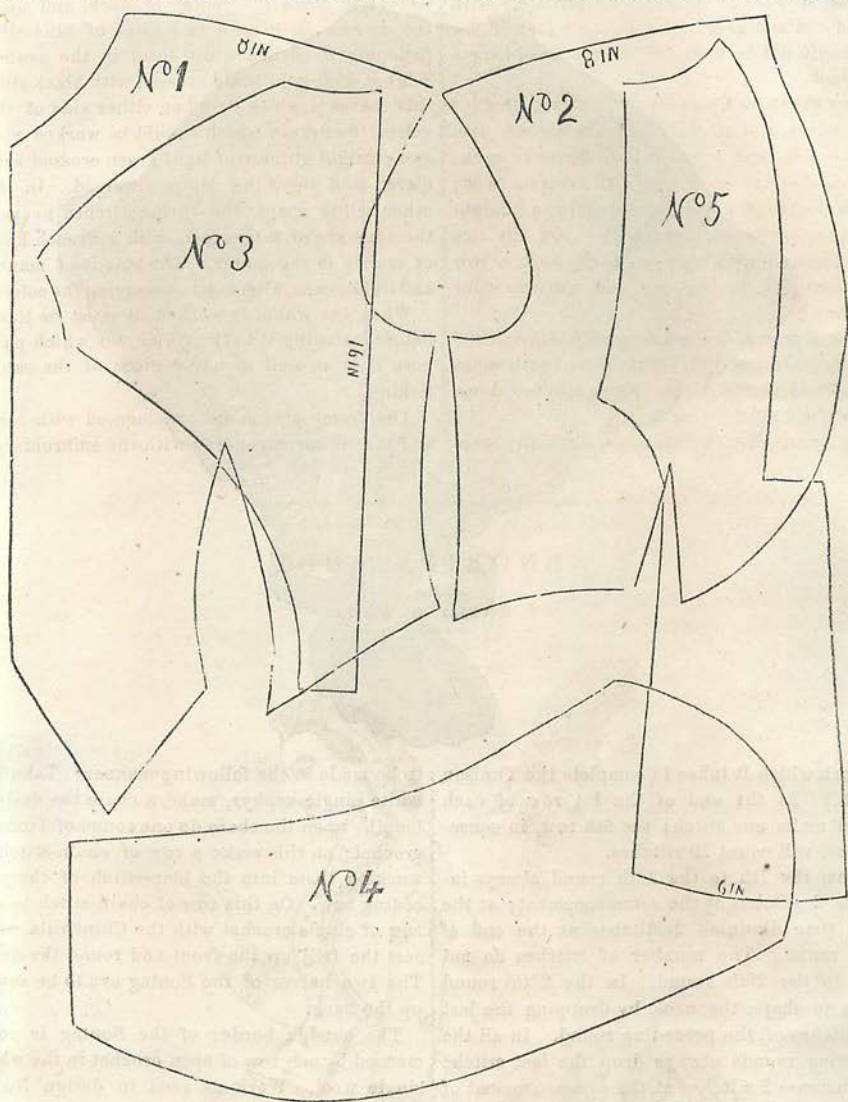


DIAGRAM FOR SENORITA BODY.

NEW STYLE SONTAG, IN TUNISAN CROCHET.

BY MRS. JANE WEAVER.

MATERIALS.—4 oz. of white double zephyr; 4 oz. of gray double zephyr; 3 oz. of white single zephyr; 3 oz. of gray Chinchilla; buttons, bone or ivory.

The center of this Sontag is done in ordinary Tunisian crochet, (which is the same as the Princess Royal Stitch we have so often de-

scribed,) and is composed, alternately, of one row white, and one row gray.

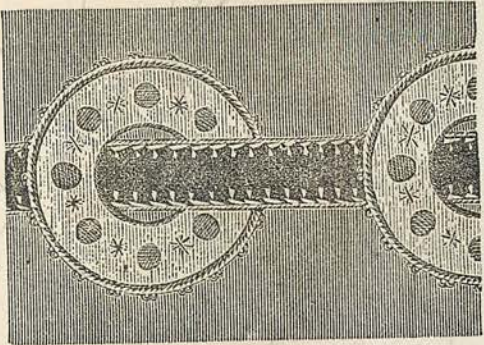
Commence at the front part of the left side, and make a chain of 50 stitches with the white double wool. Work 6 rows. After the second row increase at the commencement of each round 3 stitches; (a *round* means the two rows

squares, which are to be fastened down with the gold thread in cat-stitch, as seen in the design. The little stars at the points, where the velvet crosses, are of scarlet velvet application, and fastened down with the gold cord, sewed at regular intervals with black silk; the stitches in the center are of gold thread. The leaves in the center of the squares are of white velvet, fastened down with button-hole stitch of black silk. The stems and tendrils are of gold thread and black silk. This design is very pretty for a chair-cover.

BORDER FOR CHILDREN'S GARMENTS.

BY MRS. JANE WEAVER.

THIS border may be used for ornamenting the petticoats and dresses of little girls. It is composed of black velvet ribbon, traversed by circles cut out of white cloth or cashmere. These circles are fastened down with fine black braid, and the designs inside are embroidered with black embroidery silk. The velvet ribbon is kept in place by one row of button-hole stitch on each side, done in white embroidery silk. A pretty variety may be made by substituting other colors in place of the white cloth. Scarlet or blue, with the black velvet, would be very effective.



CHILD'S DRESS.

BY EMILY H. MAY.



We give, this month, a pattern for a child's dress, accompanied by a diagram, from which it may be cut out. It will be seen that each piece is marked with its name.

DIAGRAM FOR CHILD'S DRESS.

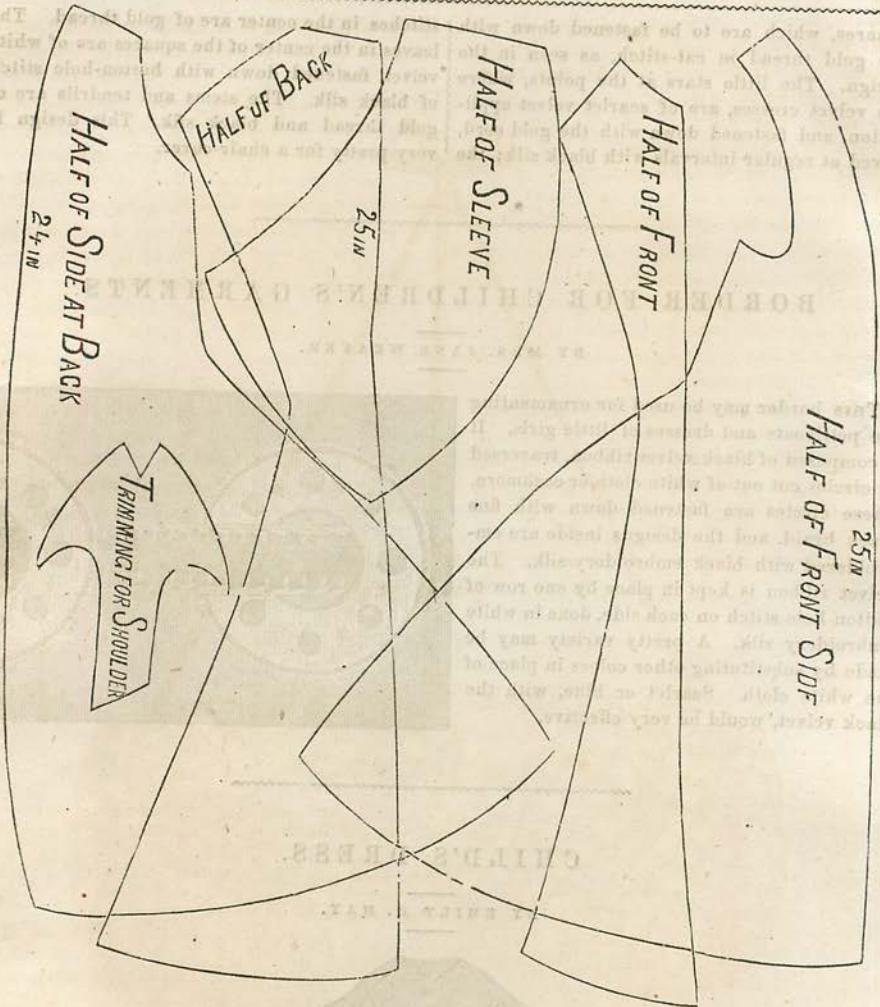
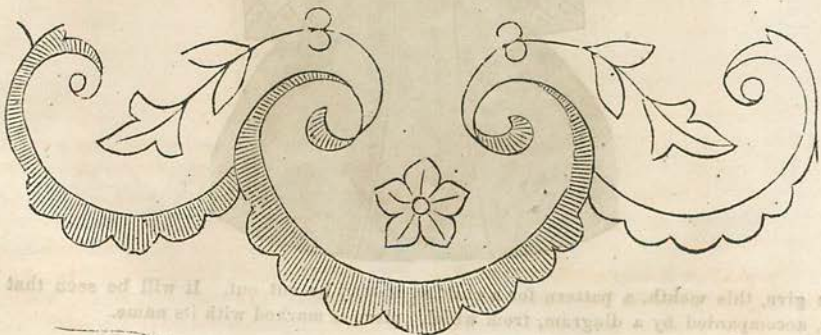


DIAGRAM FOR CHILD'S DRESS.

SILK EMBROIDERY FOR FLANNEL.



LITTLE BOY'S JACKET.

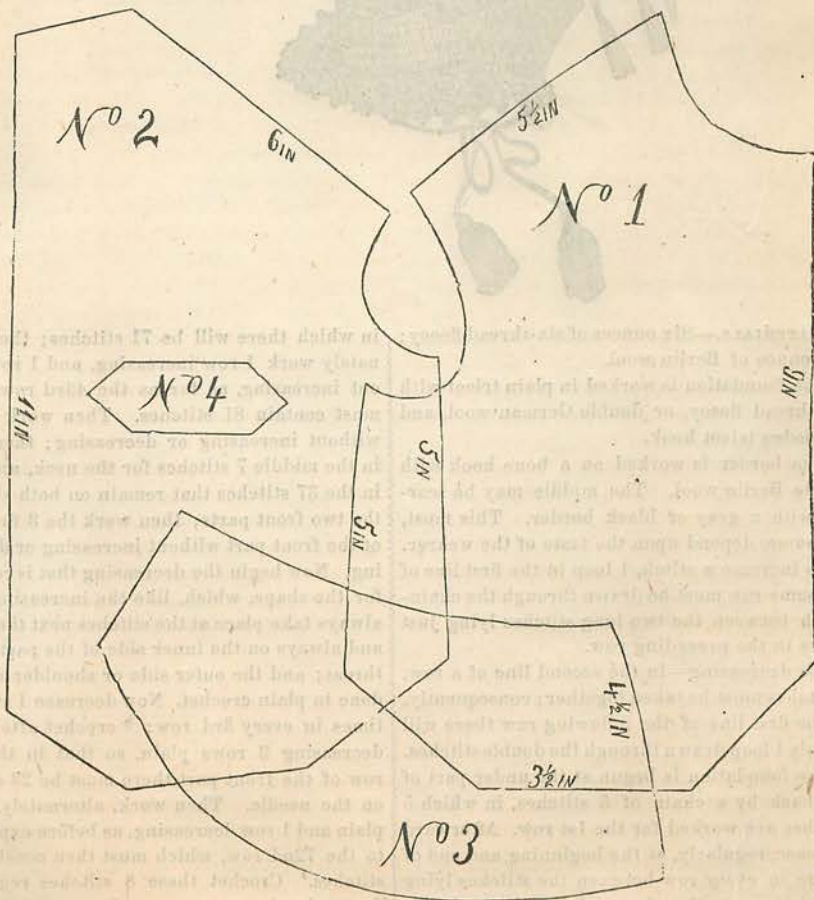
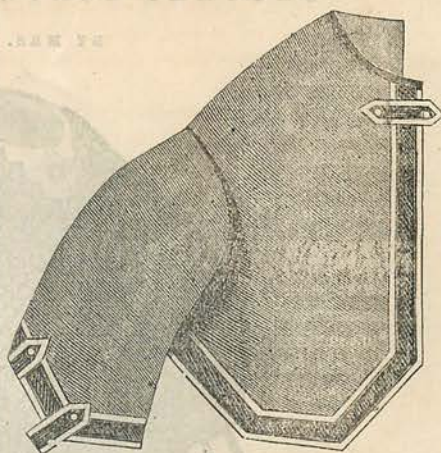
BY EMILY H. MAY.

This neat little affair is made of a plain-colored cashmere, and is trimmed with blue velvet, or blue cashmere. It is cut, in the back, exactly as in front, only a little shorter. The sleeve is open for a little distance on the back.

- No. 1. ONE FRONT.
- No. 2. HALF THE BACK.
- No. 3. HALF THE SLEEVE.
- No. 4. STRAP FOR SLEEVE AND FRONT.

This makes a very pretty jacket, at a small expense, and with comparatively little trouble.

The accompanying diagram will more fully and clearly explain the arrangement for cutting the jacket. In our next number we will give a design for a little boy's pantaloons, and accompany it with a diagram. The two together will make a very neat and becoming suit.



SHORT TROUSERS FOR A BOY.

BY EMILY H. MAY.

We give, this month, a pattern for a pair of short trousers for a little boy. These trousers are somewhat different from those which have been worn, as they are not confined by a band at the knee.

No. 1. HALF THE FRONT.

No. 2. HALF THE BACK.

No. 3. WAISTBAND.

It will be observed that the front and back are cut in one piece; but if the stuff cuts to more advantage differently, they may be made in two pieces.

An opening for the pocket may be left at the upper part where the trousers begin to slope.

These trousers go very well with the jacket given in the last number, and will together make a pretty suit.

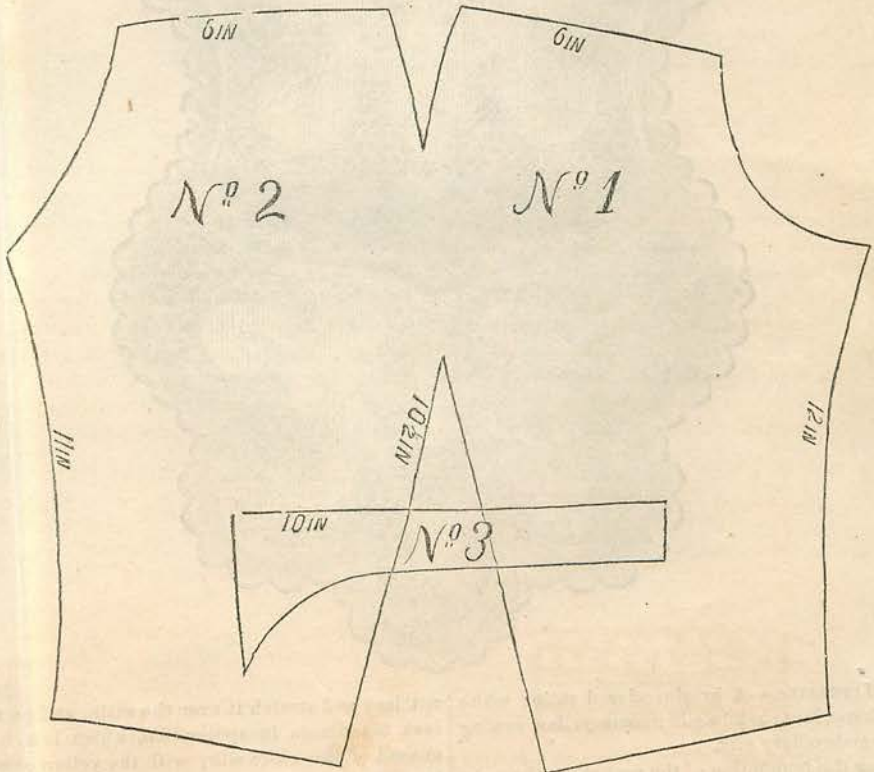
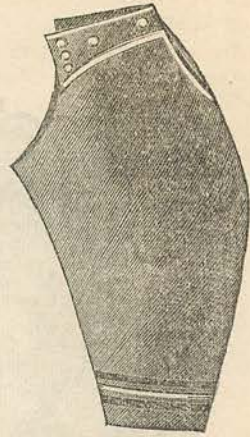


DIAGRAM OF BOY'S TROUSERS.

hole, then *, 9 chain, 1 double in the second following hole, (so that one hole with the 9 chain is passed over;) repeat from * to the hinder point, where the chain-stitch festoons must be worked into each hole several times to make the point a good shape.

2nd row, with the same wool: A double stitch into each stitch of the chain, with the exception of the middle stitch, into which three stitches must be worked throughout the whole of the row.

3rd row, with white wool: The first and last stitch of this, and all the remaining rows of the border remain untouched. For the rest, crochet in the middle stitch of the 3 in 1 of the preceding row; again 3 stitches. The rest of the row work a double stitch into each double of the preceding row.

4th row, with colored wool: Like the third row, only pass over the middle stitch of the scallop without working.

5th and 6th rows the same as the fourth.

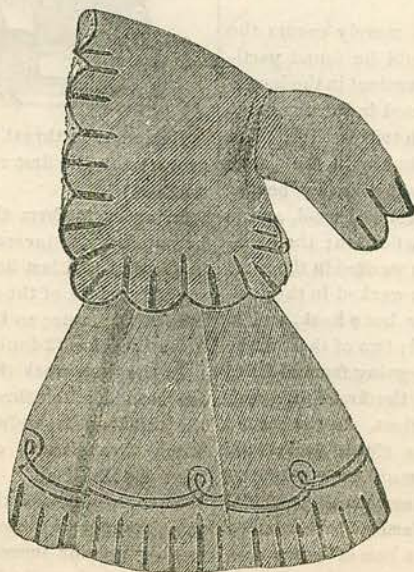
Make a chain about one yard and a quarter long, and pass it through the top row of holes round the neck of the Pelérine.

The tassels must be about four inches long, made in the two colors of the Pelérine. For the ornament, make a chain of 5 stitches, fasten into a ring, and into each stitch work a chain-stitch scallop of 3 chain, and 1 double into each stitch; fasten so as to make the round complete. Now work in double crochet 1 row white, 1 row colored, and in each middle stitch of the scallop of preceding row work 3 double in the deep part of the scallop; then a row of double, passing over the middle stitch of the scallop; 2 more rows, passing over in each row the middle stitch of the scallop as before.

The ornamental part must now be drawn over the tassel in such a manner that the head above the ornamental part may be distinctly seen, and the string joined to the tassel.

DRESS FOR A LITTLE GIRL.

BY EMILY H. MAY.



We give, this month, a very pretty pattern for a dress for a little girl; and accompany it with a diagram, by which the body of the dress may be cut out; no diagram is needed for the skirt.

This dress may be made of cashmere, or plain silk, and is trimmed with blue velvet, or ribbon and cord, as seen in the engraving above.

No. 1. ONE FRONT.

No. 2. HALF THE BACK.

No. 3. SLEEVE.

This dress is worn with a white under-body. Where it is open on the hips it is looped together with cords; and also on the back. The design is a very beautiful one.

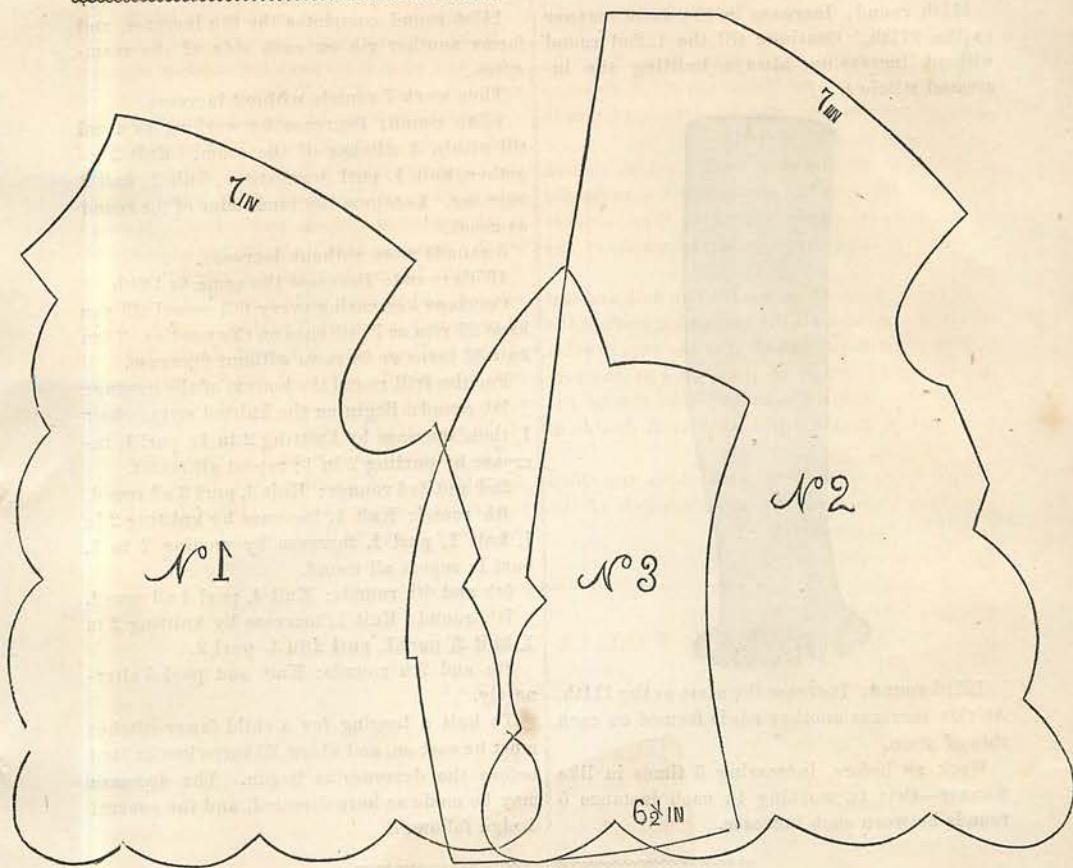


DIAGRAM FOR A LITTLE GIRL'S DRESS.

LEGGING FOR LADY OR CHILD.

BY MRS. JANE WEAVER.

THIS will be found very comfortable for ladies whilst traveling during the cold season, and makes a cozy legging for a child. It may be made in 4-thread fleecy. Four steel knitting-needles, No. 13.

Our design shows the upper part knitted with one color, and the lower portion striped by working two rows of two colors alternately.

Cast on 87 stitches on three needles—that is, 30 stitches on each of two needles, and 27 on the third.

1st round: Purl 2, knit 2, all round.

2nd round: Purl 2, knit 2, till you come to the 16th stitch; knit this stitch instead of purling it, to form the seam; knit 2 and purl 2 to the end of the round.

Continue these two rounds till you have 55 turns, or 110 rounds; a turn signifies 2 rounds.

111th round: To form the calf, knit till within 1 stitch of the seam, continuing the rib. Increase a stitch by knitting 2 in 1. Knit 1, purl the seam-stitch, knit 1, increase 1 by knitting 2 in 1, and continue the round as usual.

112th round: Same as the second round, with the exception of knitting the increased stitch on each side of the seam, which keeps the rib correct.

113th round: Same as the last, excepting that you purl the seam-stitch.

114th round: Same as 112th.

115th round: Same as 113th.

116th round: Same as 112th.