

BALL OR PARTY DRESS.

BY EMILY H. MAY.



We give, this month, a pattern for a very beautiful dress, either for a ball or for a party. The material is of silk of any color to suit the wearer. The body and sleeves are trimmed with Limerick lace. The sleeves are looped up with two bows of ribbon, with long ends, to match the dress in color. The skirt is double, and is covered with Limerick lace, which, it will be seen from the engraving above, has a very rich and elegant appearance. We annex a diagram, on the following page, by which the dress may be cut out. The length of the different pieces is given, as usual, in inches; and the diagram, with these guides, can easily be enlarged to the proper size. Any lady, even without the aid of a mantua-maker, can thus cut out such a dress for herself. We are glad to learn that thousands, who take "Peterson," are availing themselves of our instructions to be their own mantua-makers.

BURNOUS OF BEARSKIN CLOTH.

BY EMILY H. MAY.



In this department, which we call "How To MAKE ONE'S OWN DRESSES," we give, every month, a pattern for a cloak, dress, child's costume, or some other garment, accompanied by a diagram by which the article may be cut out, by any housewife, without the aid of a mantua-maker. The diagrams are, of course, in miniature; but the true size, for a person of ordinary height, is always marked on the different parts, so that it can easily be enlarged, as we have often explained before.

For this month we give a winter cloak for a lady, in a style very fashionable, at present, in

Paris. It is a Burnous of bearskin cloth, bordered with a silk binding turned over the edge; this garment is closed in front by six buttons.

The sleeve begins on the shoulder, and is afterward entirely detached from the Burnous.

Pointed collar, opening two inches in front at the neck and forming a hood behind, from the shoulder.

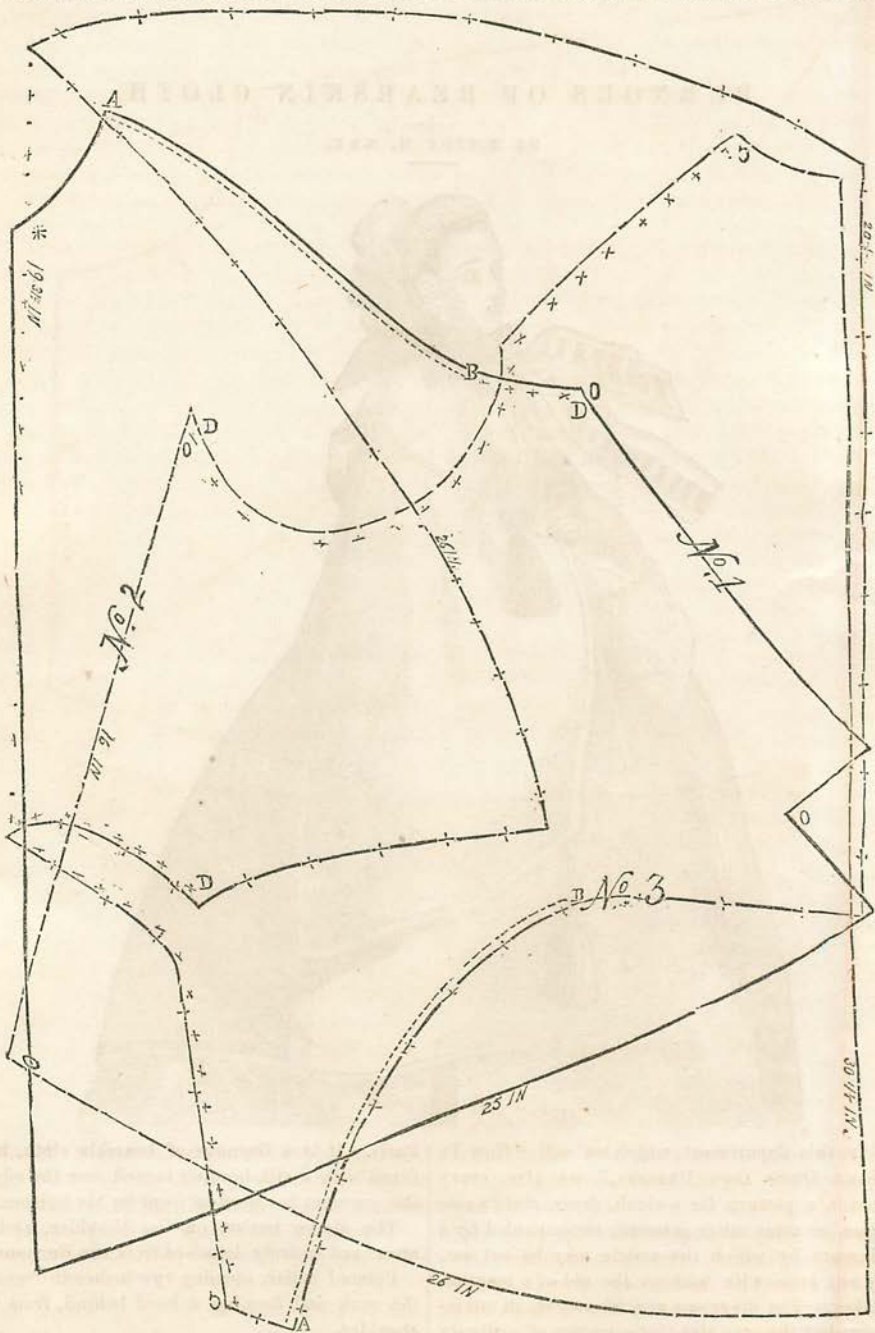
FIRST DIAGRAM.

No. 1. Front.

No. 2. Back, to join front from D to D.

No. 3. Sleeve.

The part of the sleeve marked by points from

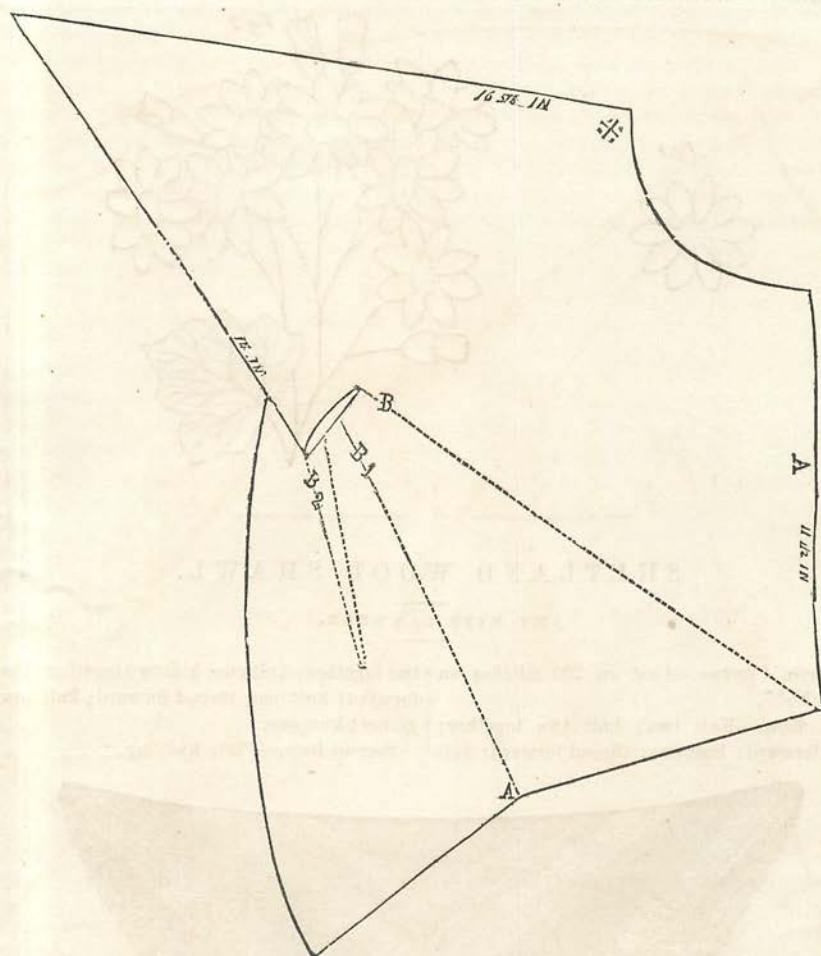


A to B, must be joined to the front from A to B. Then the part from C to D, accompanied by rings, must be sewed to the back from C to D; and again to the front from B to D. (For the hood, see side No. 2, on the next page.)

SECOND DIAGRAM.

No. 1. Hood.

The cross on the pattern marks the front of the hood. The facings form two hollow plaits behind, indicated by Nos. 1 and 2.



HOW TO MAKE A PAPER WILD FLOWER.*

BY MRS. A. M. HOLLINGSWORTH.

MATERIALS.—Lilac, pink and white tissue paper, yellow button heart same as for the Queen Margaret.

Cut as many as desired like Fig. 1, or they can be obtained already stamped; touch the stamen with gum and string on one set of petals; finish with a small green calyx, the same shape as the flower, cut a little smaller. For the buds, turn down the end of a piece of green wire, put a small piece of wax on the wire to form a bulb, slip on a set of petals, press them closely around the wax that it may not be seen, then slip on the small green calyx,

pressing it down closely to the petals. Branch like the model.

* **MATERIALS FOR MAKING PAPER FLOWERS.**—Tissue paper of various colors, carmine paper for Pinks, Dahlias, and red Roses, variegated for Japonicas, Pinks, &c., wire, wax, gum arabic, stamens, pipes, green leaves, calyx, sprays, cups for roses and buds, all the small flowers being of sixty varieties, can be obtained ready stamped of Mrs. A. M. Hollingsworth's Fancy Store, No. 32 North Ninth Street, Philadelphia. *Orders by mail punctually attended to.* A box, with materials for a large bouquet or basket, sent, by mail, on receipt of one dollar, post-paid.

DRESSES FOR CHILDREN

BY EMILY H. MAY.



PATTERN FOR BOY'S DRESS.

We give, this month, two different diagrams for children's dresses. The first is a Dress for a Boy. For the fall months it is especially suitable, and is also excellent for winter, if made out of thicker cloth. Of this one the jacket and waistcoat are made of velvet of any color, with military braid to match for the trimmings, and fancy buttons. The skirt is made of Orleans cloth, with two rows of velvet the same color as the jacket, the lower one being the broadest. The skirt is made rather full and quite ample in width.

The waistcoat fastens up the front with hooks,
Vol. XXXIV.—12

and is finished with very narrow velvet braid. The same also goes round the collar. The dress only requires drawers with a deep Broderie edging to make it the most elegant of any out this season. We have made the diagram for this dress particularly plain, as it consists of a larger number of parts than usual.

- No. 1. THE SKIRT.
- No. 2. THE FRONT.
- No. 3. THE BACK.
- No. 4. THE SIDE.
- No. 5. THE SLEEVE.
- No. 6. THE CUFF.

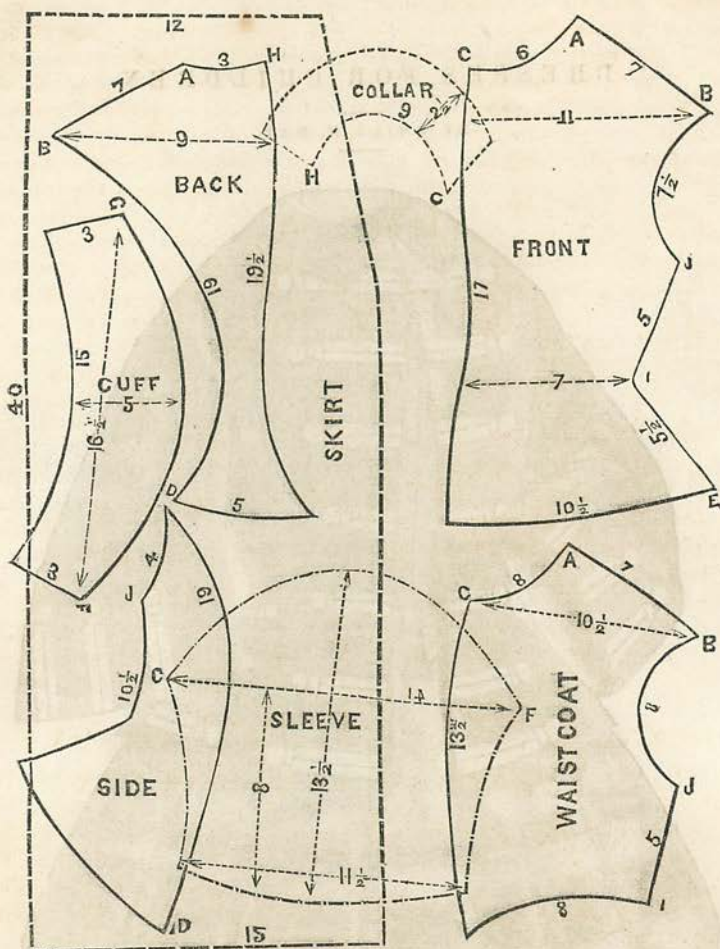


DIAGRAM FOR BOY'S DRESS.

No. 7. THE COLLAR.

No. 8. THE WAISTCOAT.

The lengths of the various parts are marked on the side. Of course, they may be varied, more or less, according to the size of the young lad.

Our next pattern is a SACK FOR A LITTLE GIRL. We omit a drawing of it, for want of room; but give the diagram; and as this dress is much simpler than the last, the diagram is all that is necessary. The Sack may be varied in size, it should be remembered, so as to suit children of different ages. To do this it is only necessary to preserve the proportions of the three parts. We should add, that, for a girl of the ordinary size, the height of the back and front, respectively, are about thirty inches. For the diagram see the next page.

No. 1. BACK.

No. 2. FRONT.

No. 3. SLEEVE.

The beauty of this charming little garment may be much increased, by trimming it in the style seen in the diagram. This way of trimming is, just now, all the rage in Paris, especially for children. It is executed in gimp, and is quite easy to do. Or the Sack may be finished with a pretty braid, if intended for the early fall months, and made out of a light material. The Sack, for later fall wear, may be of velvet, as the boy's dress given before, or of cloth, as the taste of the mother may suggest. A very slight skill will be required to make this garment. The other is more difficult, but still, with the elaborate diagram, may be made, we think, with ease.

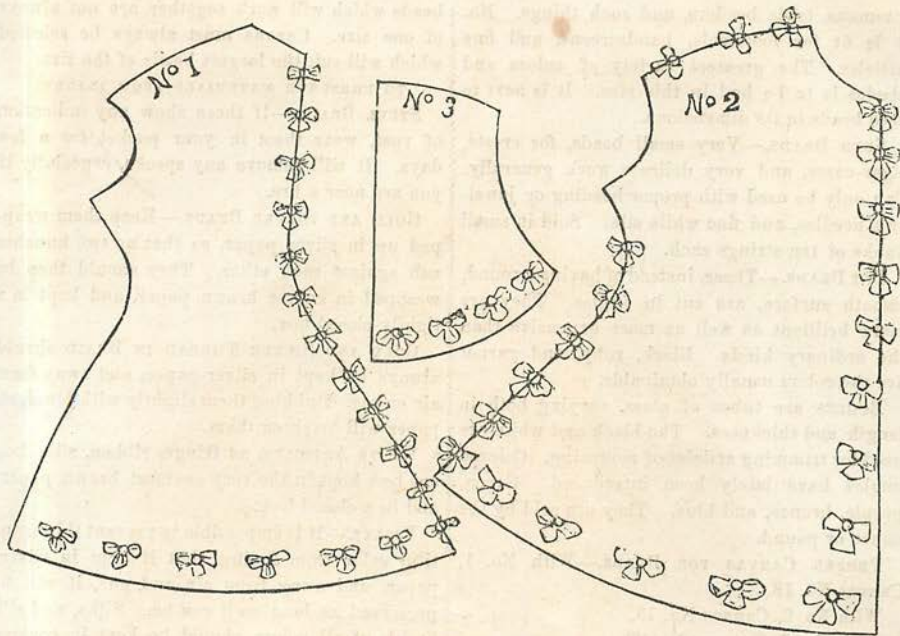


DIAGRAM FOR LITTLE GIRL'S SACK.

OUR DICTIONARY OF NEEDLEWORK.

NO. IX.—CONCLUSION.

BY MRS. JANE WEAVER.

MATERIALS IN METAL.

GOLD BRAID.—The Parisian is much superior to the English for flexibility and purity. It is made in various widths. The English braid is usually Russian plait. It may be had either pure, or washed. The former only can be used for any article intended for durability.

SILVER BRAID is very little used.

GOLD CORD OR THREAD.—Sold in small skeins, varying from No. 0 (the finest) to No. 6. This, also, is of various qualities. It is sometimes sold on reels.

Silver thread is not so much used, but it is very pretty for purses, &c.—either for bridal or mourning purses.

BOURDON.—A cord, covered with gold or silver, used much by the Parisians in crochet, with colored silks. It is made in various sizes, and is extremely brilliant, but not very durable.

BULLION.—This is either dead or bright gold. It is a sort of tube of gold, used in embroidery. It, also, is of two qualities.

SPANGLES, though little used, yet make pretty decorations in embroidery.

All these materials should be kept in silver, and then an outer covering of blue paper; and, especially, not be exposed to gas.

FILET.—A French material exactly imitating netting. It is both black and white, and with the mesh of various sizes. To get a piece to imitate square netting, it must be cut on the cross.

GUIPURE NET.—A fancy net, which, laid under muslin and applique, gives the appearance of bars.

BRUSSELS NET.—A very soft, fine net, used in Swiss Lace.

TOILE CIRE.—An oil cloth, much used in muslin work; it is green on one side, and black on the other. If good, it is very thin and flexible. It differs much in quality, the English generally being thick and hard.

BEADS.

POUND BEADS.—These are like seed beads, except in size. Those in most general use are distinguished as Nos. 1, 2 and 3. No. 1 is rarely used, except for grounding mats worked in wools and silks. No. 2 is used for tables,

CHILD'S DRESS FOR FALL.

BY EMILY H. MAY.

We give, this month, a pattern and diagram, by which to cut out a CHILD'S DRESS. The dress is suitable for the autumn months, is to be made of scarlet merino, and is unusually pretty, as well as very fashionable.

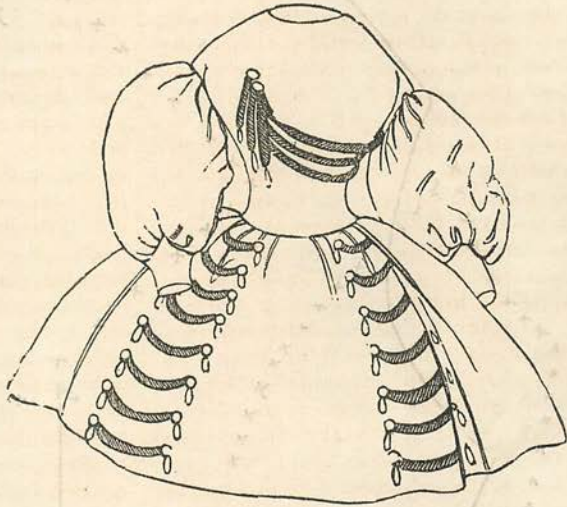
No. 1. Half the Front.

No. 2. Half the Back.

No. 3. Side-Body.

From A to B is for a plait in front. The pattern is to be enlarged from the diagram, according to the size of the child. The decorations of the body are in the military style, with bands of narrow velvet fastened on the shoulder, and brought to the front as shown in the plate: the skirt is adorned with velvet and steel studs.

In order to vary the style, however, the skirt may be trimmed differently, if preferred. We give two engrav-



FRONT OF DRESS.



BACK OF DRESS.

ings, to show how this may be done: as also to exhibit the back and front. The front skirt is trimmed with velvet and steel studs, in one style; but the back skirt is trimmed after a different pattern; and many think this second style the prettiest. In all other respects, the two dresses are alike: the decorations of the body are in the military style in both. For the autumn months, nothing more beautiful has been got up, for children, in either Paris or London.

The diagram, by which to cut out this tasteful dress, will be found on the next page. We repeat, what we have often said before, that the patterns are to be enlarged, according to the size of the child: a proportion only to be determined by the mother or dress-maker. We have, it will be remembered, often described how to enlarge patterns.

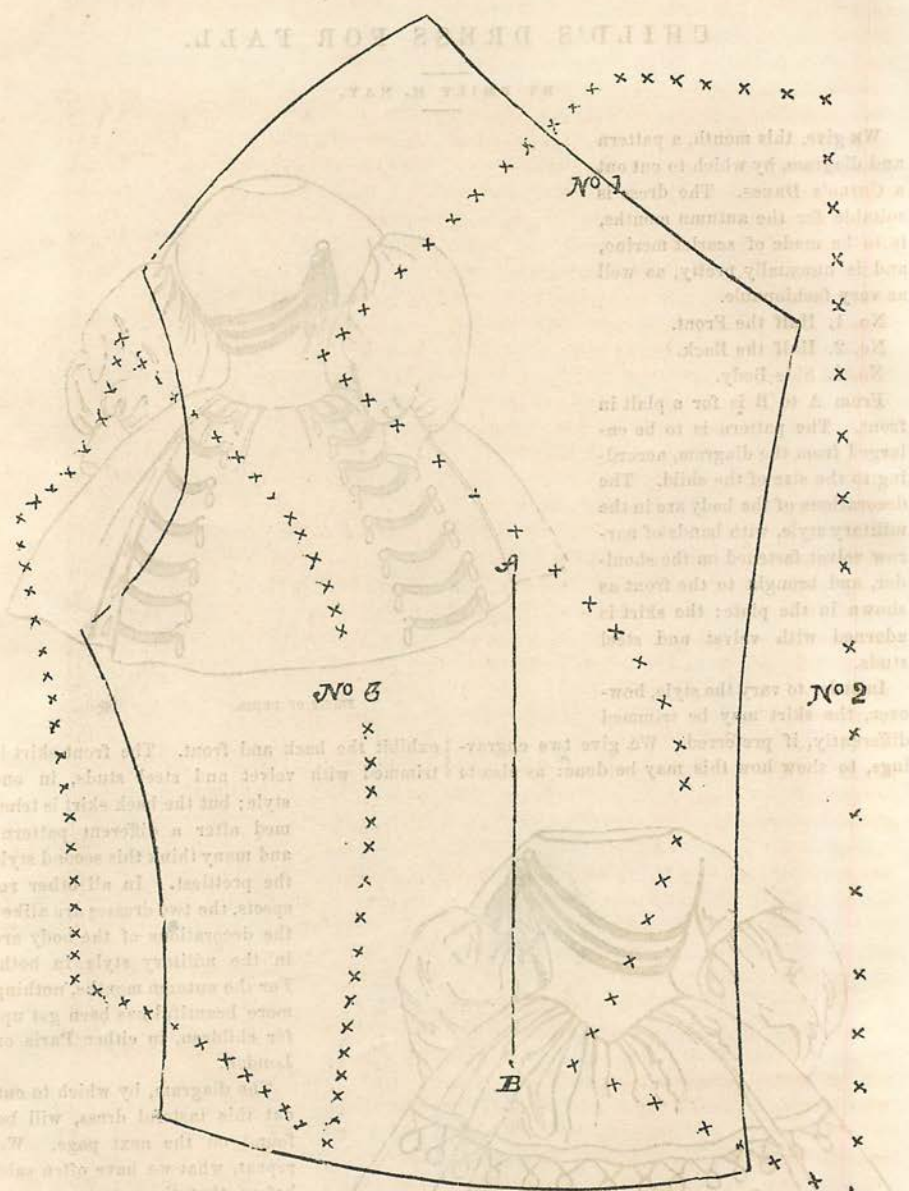


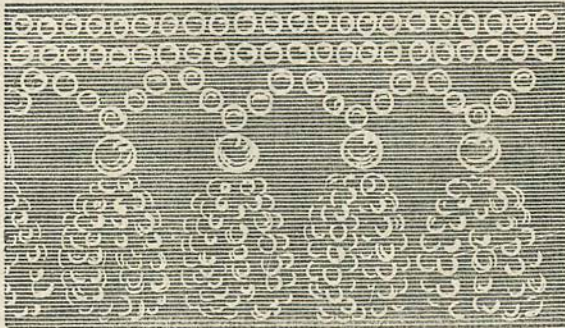
DIAGRAM FOR CHILD'S DRESS.

beads to match the beading of the top. The fastening down in the centre of the stem is covered by a twist of beads, having much richer tassels at their ends.

The colors of the beads employed in this fringe are crystal white, French blue, and gold color. So long as these colors are employed, being in

harmony with the work, their arrangement is a matter of taste.

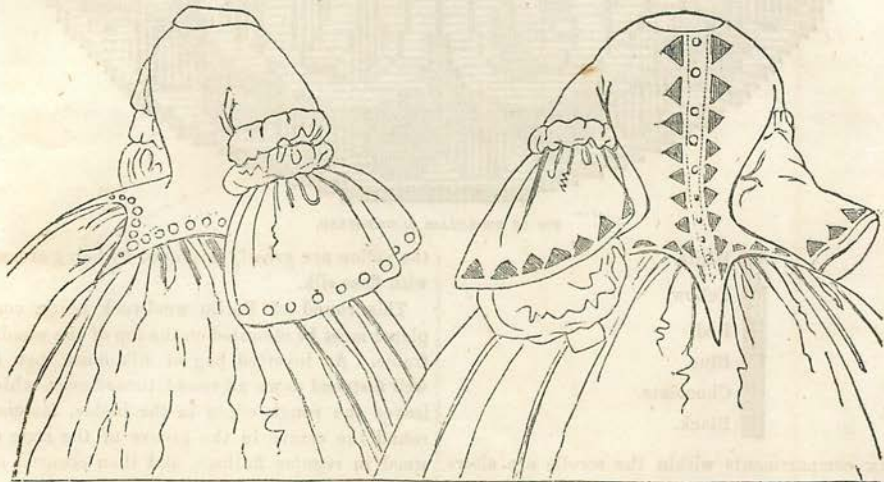
In the same way the color of the silk, which conceals the frame-work of the stand, may be either blue, crimson, or gold color, according to the choice or convenience of the lady-worker.



BEAD FRINGE FOR HOUR-GLASS CANDLE-STAND.

A FASHIONABLE BODY.

BY EMILY H. MAY.



With this number we give a pattern for a very fashionable body, of which see the front and back views above, and the diagram on the next page. The body is formed in points, one in the front, one at the back, and one on each hip. We have not cut out the plaits in front, leaving that to be arranged according to the size required for the wearer.

The three patterns of the diagrams are as follows:—

- No. 1. Half of the Front.
- No. 2. Half of the Back.
- No. 3. Side-Body.

These are to be enlarged, in the manner we have frequently described. Each pattern has the number of inches marked on it.

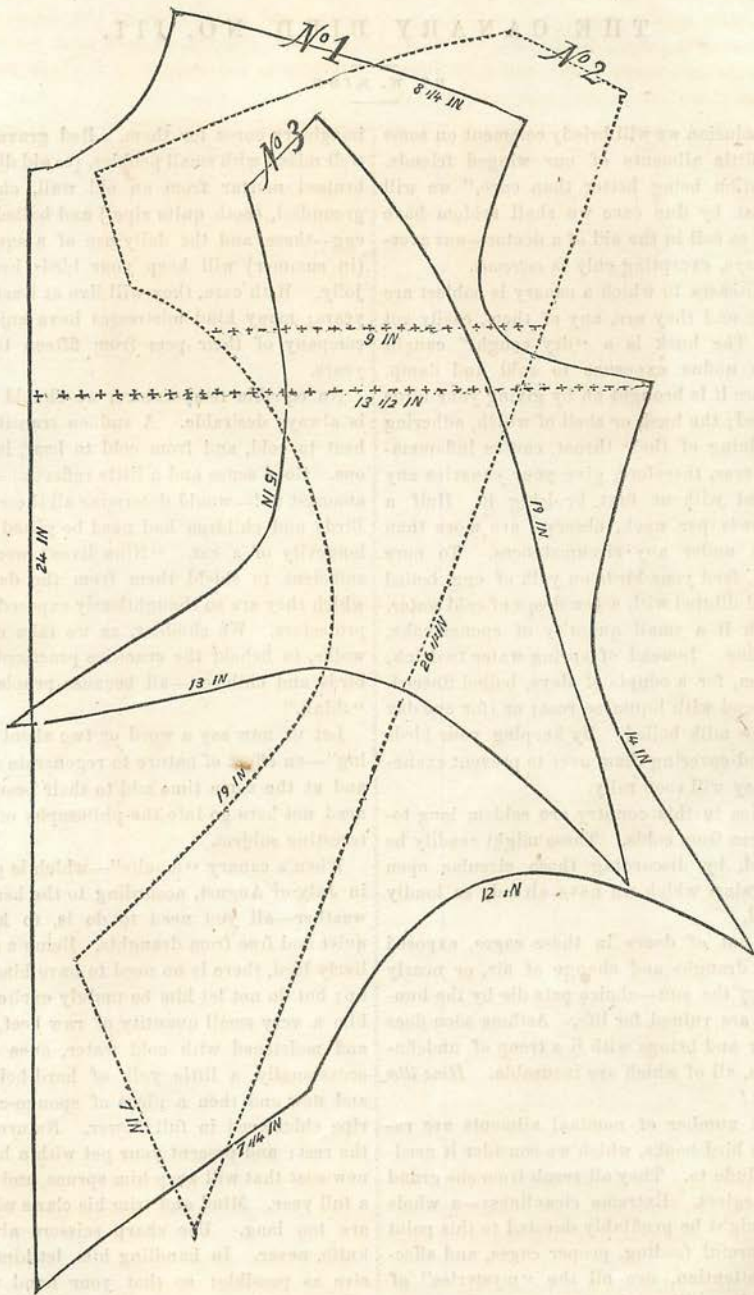


DIAGRAM FOR FASHIONABLE BODY.

A BEAUTIFUL WHAT-NOT.

BY MRS. JANE WEAVER.

IN the front of the number, we give a beautiful design for a What-Not, consisting of three trays, or shelves, with a narrow upright border. They are arranged to hang one over the other, being all suspended by means of one set of cords. These trays are of light wood, rounded at the corners, and lined with either cloth or German velvet.

The border of bead-work, of which also we have supplied the design, is intended to cover the front of each tray. It is worked on fine canvas. The outline of all its parts is traced in with beads of chalk-white, and all the interiors are of transparent white. The veins of the leaves and the tendrils are in gold beads, as is also the spot in each berry. The ground is a light, bright, opaque blue. The edge is of black and gold.

We have also given a portion of the fringe which hangs down from each part of the treble tier below the bead border. This is formed of gold and blue, the lower part of each loop being in gold, and its upper part in blue. These loops

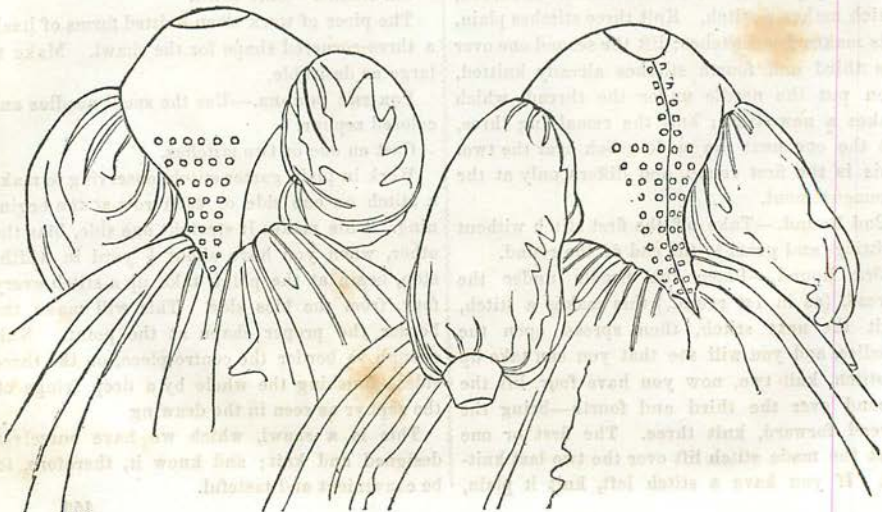
being thread of regularly graduated lengths, each is twisted round its next neighbor.

The three different parts of the What-Not being all complete, they are put together in the following manner:—Four small rings are attached to each of the trays, two in the front, two in the back, in the places indicated in our engraving. In the fronts of the bottoms of the trays, in a line with the two front rings, a hole must be pierced, and through this hole a silk cord must be passed, first through the hole, then through the ring, and so on to the top, the distances being regulated by knots in the cord, and a tassel, either of beads or silk, being suspended from each ring, in front of the bead-work.

Ladies who do not wish to undertake quite so much work, may, with exactly one-third of the trouble, produce a more simple, but still very elegant, article in the shape of the What-Not, formed only of one tray, but in every other respect following the instructions we have given.

FASHIONABLE BODY AND SLEEVES.

BY EMILY H. MAY.



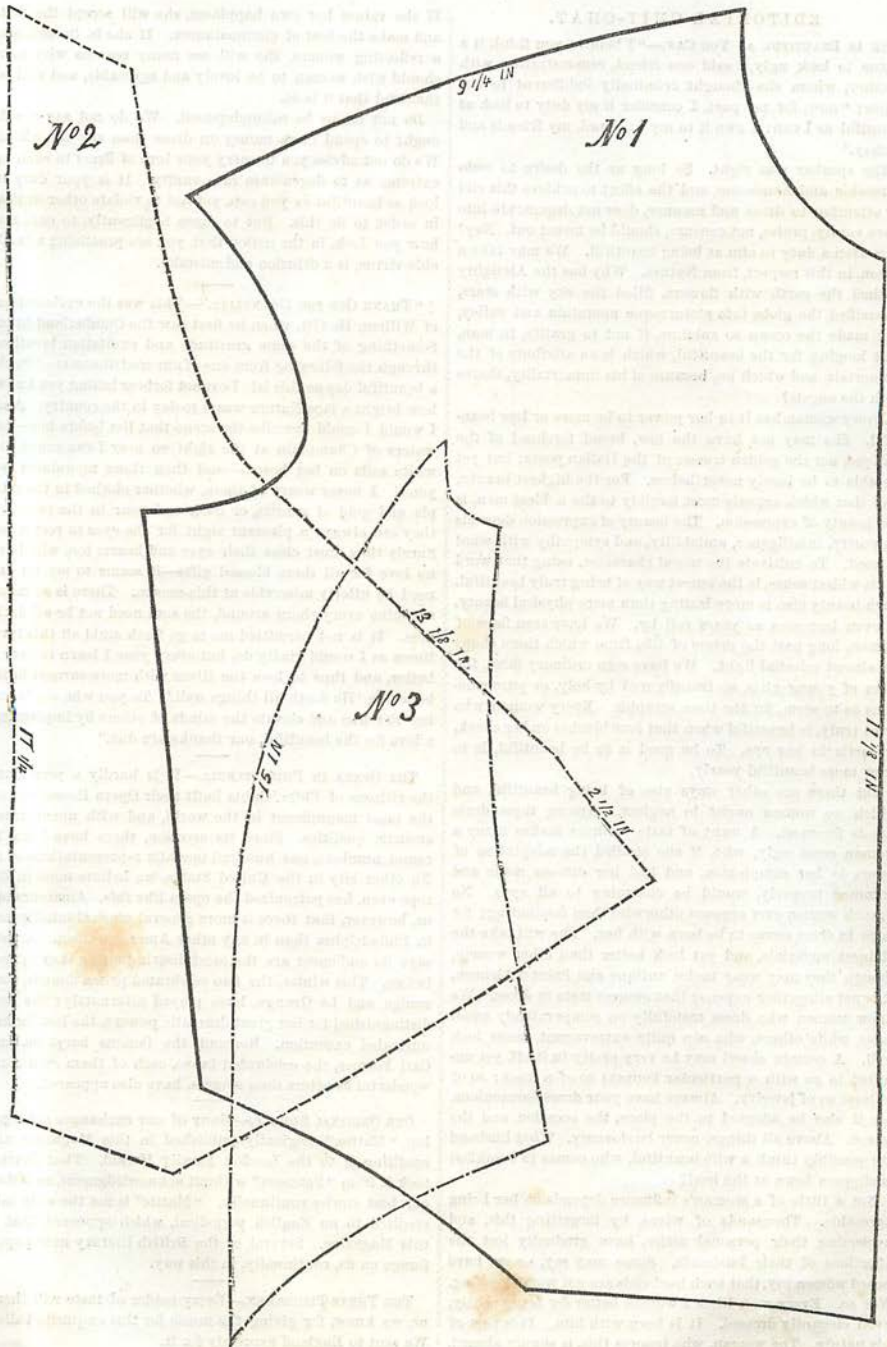
We give another new and fashionable pattern for a body and dress, this month; the diagram, to cut it from, being appended below, with measurements for a middle-sized lady.

No. 1. FRONT.

No. 2. BACK.

No. 3. SIDE BODY.

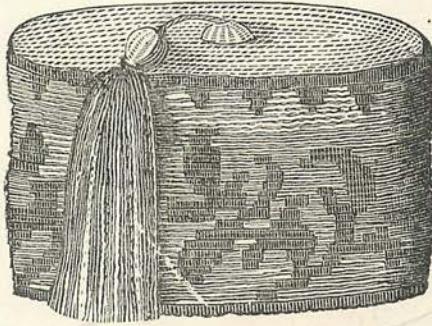
Any lady, therefore, can cut this out.



SECTION OF GOLFAR IN SWISS JARD
 444
 In the following numbered we have a pattern for the skirt, which is cut
 for a skirt: with this pattern for the skirt, please.

GREEK SMOKING CAP IN CROCHET.

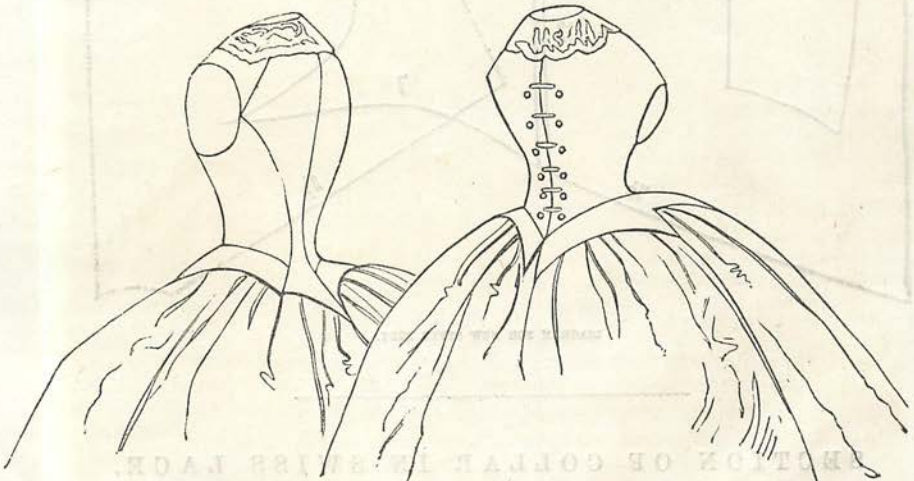
BY MRS. JANE WEAVER.



This is a very stylish cap, and peculiarly suitable for a Christmas or New Year's present, from a lady to a gentleman. In the front of the number we give an enlarged pattern of the top and side, from which any one, who can crochet, can make the article, without the necessity of a detailed description. The cap is to be lined, according to the taste of the maker, and finished with a tassel, as seen in the engraving above. Any colors may be selected that will look well together: blue and yellow, red and green, black and gold, for instance.

NEW STYLE FOR BODY.

BY EMILY H. MAY.



OUR pattern, for this month, is a new style for a dress, just brought out in Paris. The engraving represents both the back and front of the body. The diagram is to be enlarged as usual. The size, in inches, for a lady of medium height, is marked, it will be seen, on each of the following; viz:

No. 1. FRONT OF BODY.

No. 2. SIDE BODY.

No. 3. BACK OF BODY.

In the November number, we gave a pattern } a lady's toilet, for the winter, would be com-
for a cloak: with this pattern for the dress, } plete.

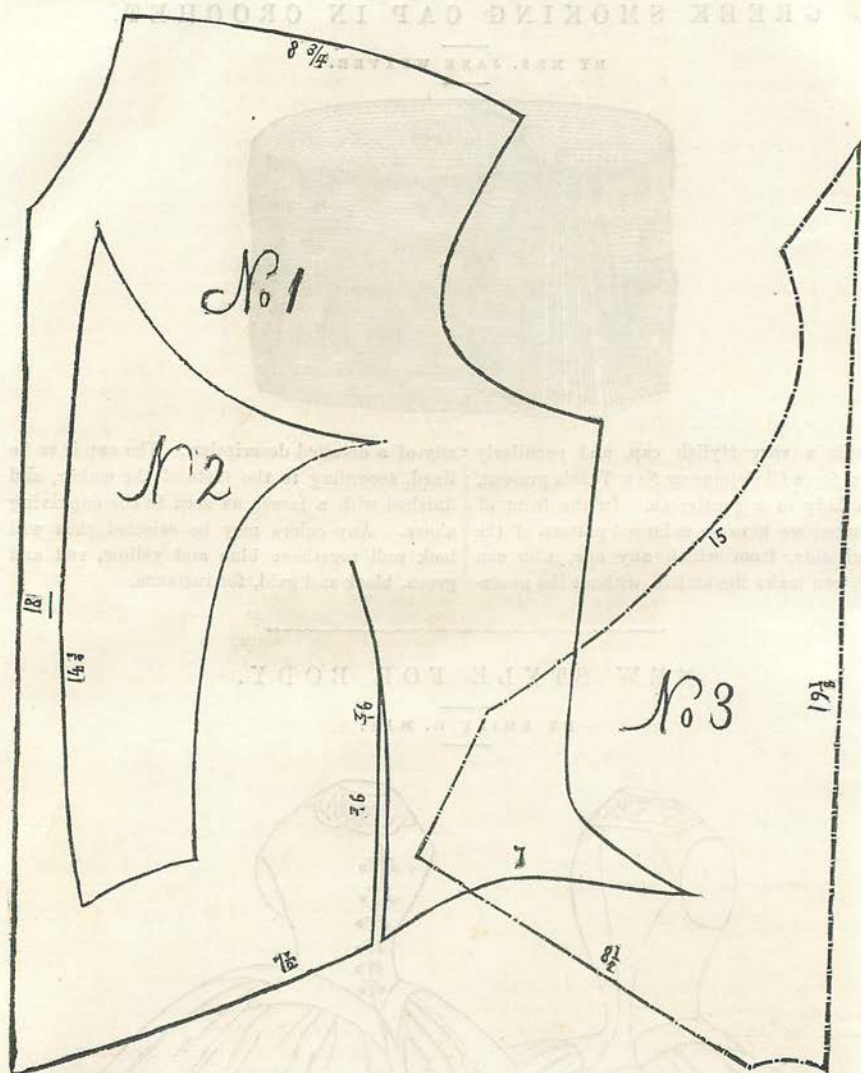


DIAGRAM FOR NEW STYLE BODICE.

SECTION OF COLLAR IN SWISS LACE.

BY MRS. JANE WEAVER.

This elegant article is to be worked on jaco- needle, and various fine ones. From the sec-
net muslin, with embroidery cotton, No. 40, and tion we give, the whole collar may be drawn,
sewing cotton, No. 50, with a coarse sewing of a size to suit the wearer.

WINTER MANTLE: CHILD'S DRAWERS.

BY EMILY H. MAY.



WINTER MANTLE.

For our department "How to Make One's Own Dresses," we give, this month, a fashionable Winter Mantle, and a pattern for Child's Drawers. THE WINTER MANTLE, which the annexed engraving represents, is unusually elegant. The body is made of velvet of any color, to suit the taste of the wearer; but black, or rich deep claret, are the most general, although we have seen some of a bright green, and a few of a rich deep violet. In whatever color it is made, the sleeves, which the pattern will show, are extremely wide, and nearly meet together at the back.

They are made of cloth of a corresponding color with the body, and with a deep piece of velvet

buttons or small tassels coming from the upper part. The sleeve has also a piece of velvet of a different shade, but very narrow, running down the front and also over the shoulder, over where the shaping takes place, with a row of buttons or small tassels. There are likewise three rows over the shoulders, from which a rich deep fringe falls. This Mantle is tied to the figure at the back, and, from its shape, sits both easily and gracefully.

FIG. 1. SLEEVE.

FIG. 2. FRONT VELVET.

FIG. 3. BACK VELVET.

The size of each of these pieces is marked, in inches, along the sides, so that they can be re-produced in a full sized paper pattern.

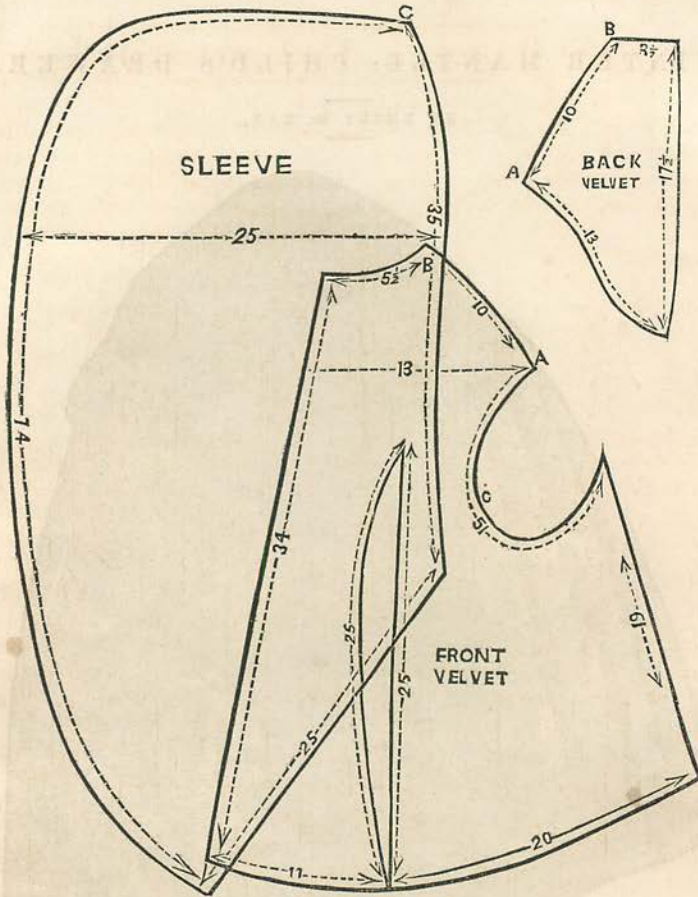
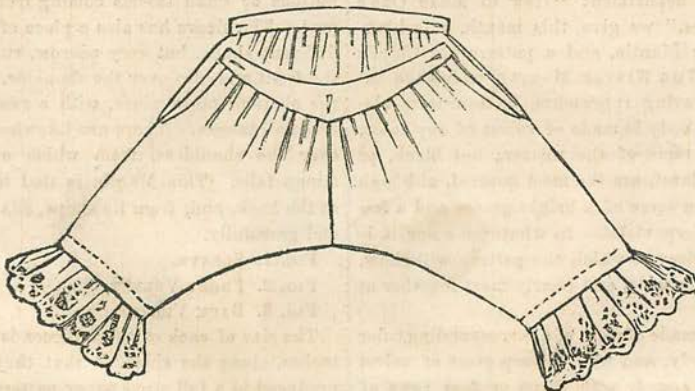


DIAGRAM OF WINTER MANTLE.

THE CHILD'S DRAWERS, of which the accompanying is an engraving, may be readily cut out, the drawers. No. 2 is the band before. No. 3 is the band behind. The left hand side of the pattern from the diagram on the next page. No. 1 is goes before; the right hand side goes behind.



CHILD'S DRAWERS.

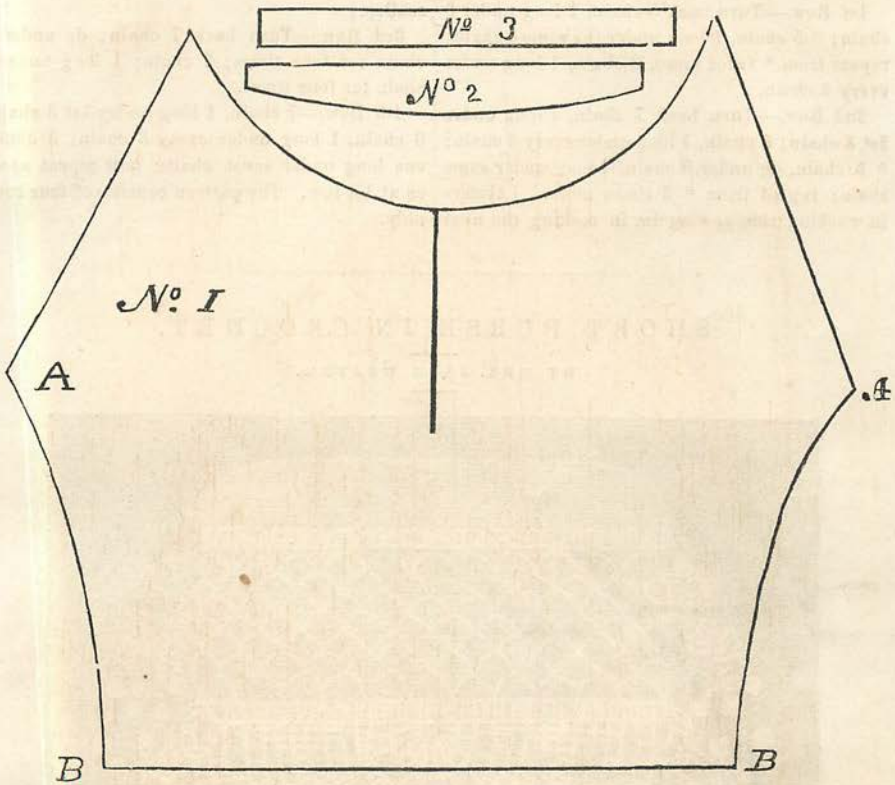
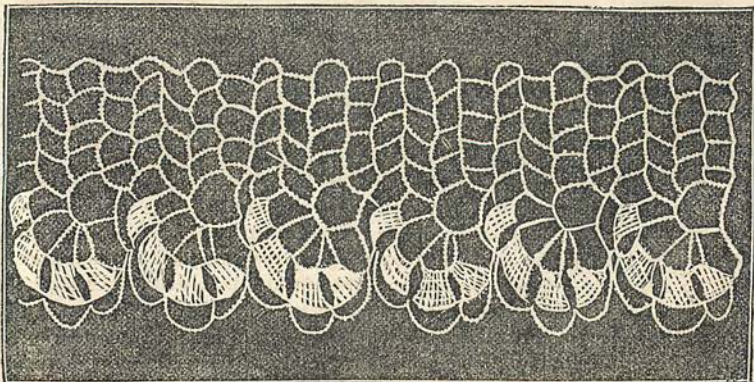


DIAGRAM OF CHILD'S DRAWERS.

CROCHET EDGE, WORKED THE SHORT WAY.

BY MRS. JANE WEAVER.



No. 20 cotton. No. 4 Penelope Hooks. { 1 long into 4th loop for four times; 5 chain; 1
 Make a chain of 20 stitches; 1 long, 3 chain; } long into last loop.

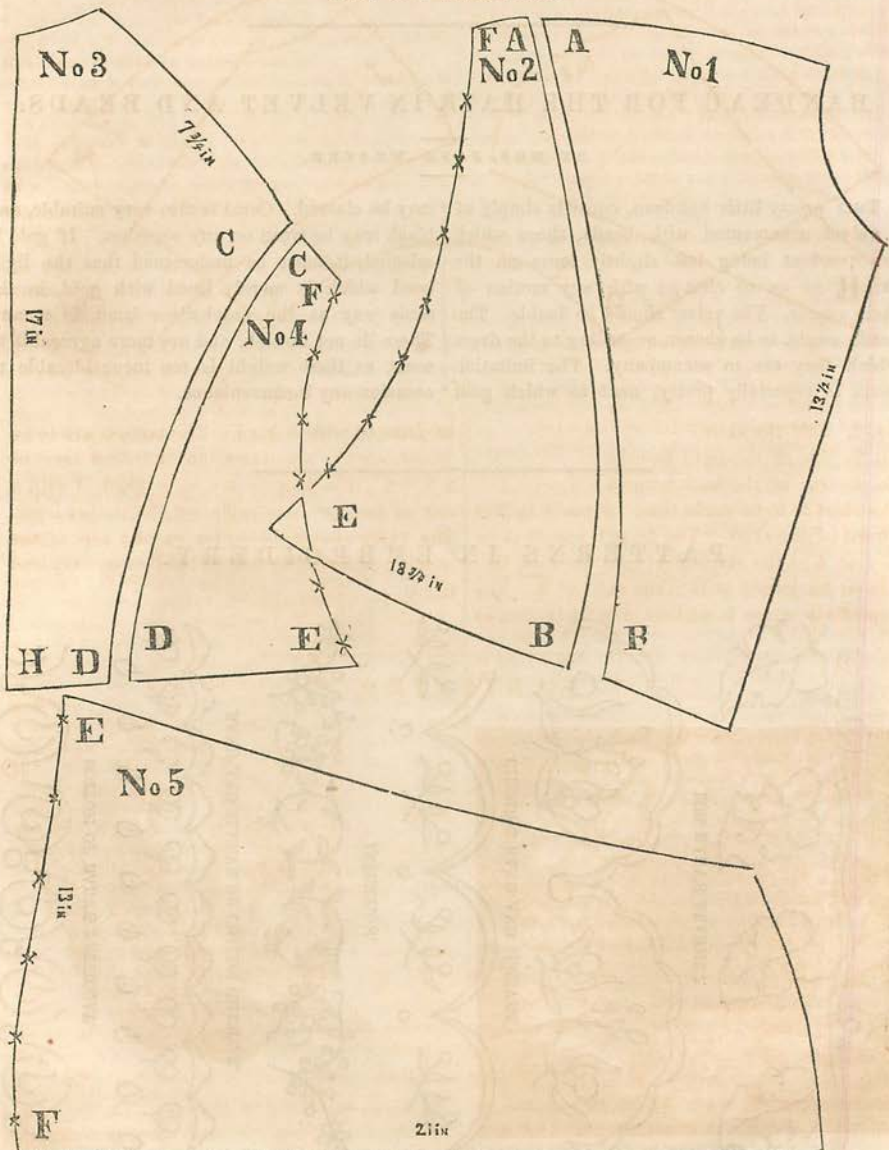
NIGHT DRESS AND GIRL'S APRON.

BY EMILY H. MAY.

We give, this month, two diagrams for our popular department, "How To Make One's Own Dresses." The first is the body of a night dress: the second a silk apron for a little girl. Both are easily made.

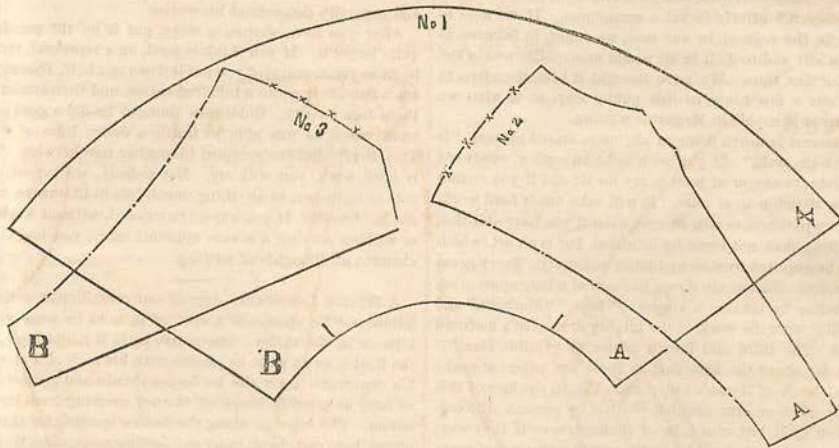
- No. 1. Half the front.
- No. 2. One side-body of front.
- No. 3. Half the back.
- No. 4. One side-body of back.
- No. 5. Sleeve.

BODY OF A NIGHT DRESS.



The front is to be joined to the side-body from A A to B B. The back to be joined from C C to D D. The sleeve is to be inserted plain from E E to F F, between the front side-body and the back side-body, which brings the sleeve nearly to the bottom of the waist. The bottom of the sleeve is to be gathered, and put on to a band, with a cuff or ruffle. A worked ruffle is to be set on, like bretelles, across the shoulders, from A A to B B and C C to D D. The back is to be slightly gathered from D to H. A full skirt is to be set on to the waist. Finish with a ruffled collar to match the bretelles, or with a plain collar trimmed with edging.

GIRL'S SILK APRON.

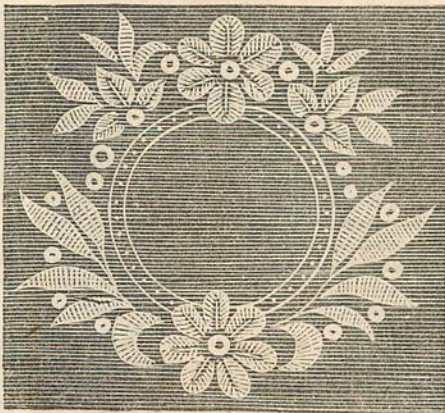


- No. 1. Half the skirt.
- No. 2. One of the front lappets.
- No. 3. One of the back lappets.

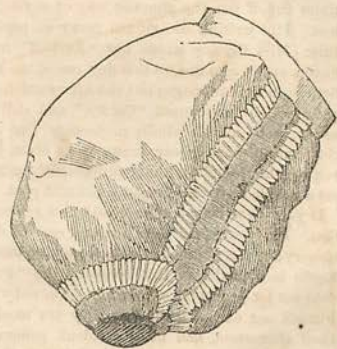
The skirt is to be made bias. From A to X is the front of the skirt. The front lappet is to be joined at A to the skirt at A; and the back lappet is to be joined at B to the skirt at B. The intermediate space is without any body, but to

be finished with a cord. The lappets are to be joined on the shoulders, on the lines marked * * * *. The lappets are to be finished with a row of lace, or bias ruffle, on the dotted lines. The ruffle should be wider on the top of the shoulder, narrowing toward the bottom back and front.

VARIETIES.



WREATH FOR HANDKERCHIEF.



SLEEVE.