



## CHAPTER XVII.

## ON THE WRITING-DESK.



LABORATE pen-wipers are not always suggestive of frequent use, and yet everybody may reasonably expect to find on the writing-desk or table something beside pen, ink and paper, and every lady likes to prepare the pretty trifles which combine beauty with utility.

**Butterfly Pen-Wiper.**

FIGURE NO. 1.—The first requisite to such a butterfly as this is his body, which is formed of brown velvet firmly stuffed with cotton. His horns are of wire, wrapped with brown crewel of the proper shade; and his eyes are two large round beads. His wings are of gold and dark brown satin, embroidered as pictured in satin stitch of the same shades. Bright-colored flannels, properly pinked, are used for the wipers and are much larger than the butterfly himself, and so show beyond him. Fine effects may be produced by copying in satin stitch the coloring of the natural butterfly. The one shown is of the full size of the pen-wiper.

**Leaf Pen-Wiper.**

FIGURE NO. 2.—A geranium leaf was used

as a model for this beautiful pen-wiper, and the green cloth from which it is cut is shaded and veined to look as near like the natural leaf as possible. A rubber stem from some artificial leaf may be attached between the other two leaves, which form the wipers and are cut from dark-green cloth. The edges are all pinked, and the shading of the upper leaf may be done with oil or water color paints. Any other kind of leaf may be used for a model, the oak, ivy, maple, begonia and cyclamen leaves all being pretty and effective.

**Pansy Pen-Wiper.**

FIGURES NOS. 3 AND 4.—The exact size of this pretty pen-wiper is portrayed at Figure No. 3. The large petal at the top is made of deep purple velvet, the center petals are of deep yellow velvet and the lowest petal of pale yellow. The petals are each button-holed about the edge with flosses of their own color, and are arranged to lap in the manner represented. Each section is shaped as pictured, only that the underlapping petals are extended to meet in points under the center petals. The long stitches are made with deep yellow on the purple, with purple on the deep yellow, and with pale violet on

the pale yellow. The wipers, in one or more colors and various sizes, are cut from flannel— such articles should be selected to accord with the natural blossom, of which there are

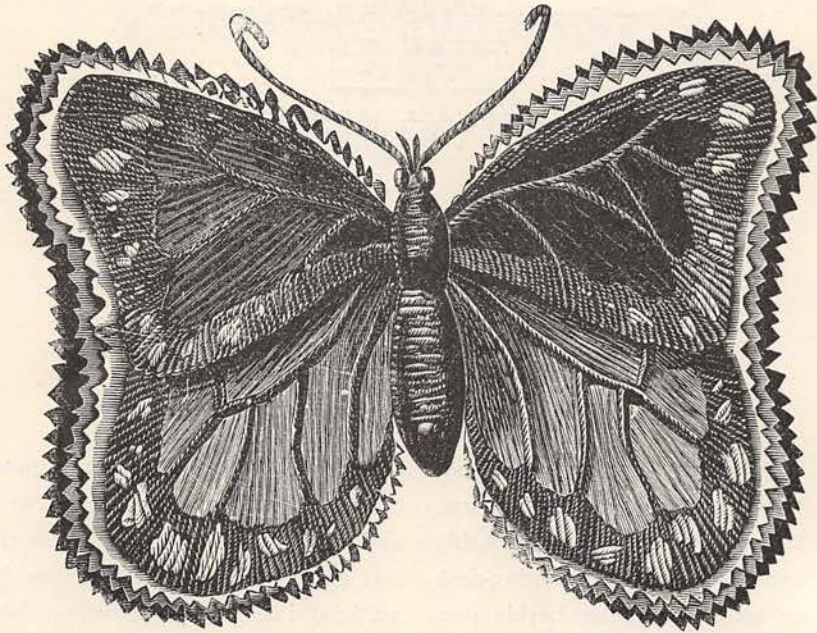


FIGURE NO. 1.—BUTTERFLY PEN-WIPER.

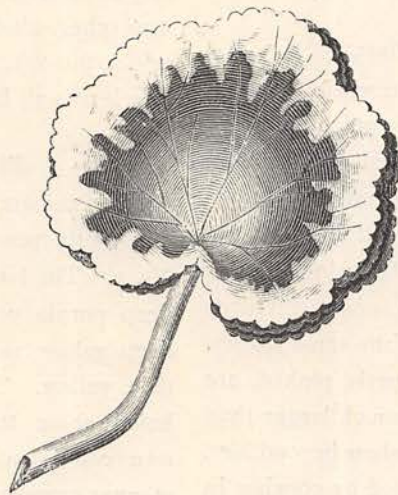


FIGURE NO. 2.—LEAF PEN-WIPER.

cloth or any similar material, and shaped as pictured at Figure No. 4, which illustrates the back view of the pen-wiper. The colors for many varieties. Velvet, velveteen and cloth are among the most desirable fabrics in use for them.

Pond-Lily Pen-Wiper, and Method of Making It.

FIGURES NOS. 5 AND 6, AND DIAGRAMS A AND B.—The graceful pond-lily is taken for a

to the flower. The three sizes used are shown by Diagram A, in which the dotted lines show the two smaller sizes and the solid line the

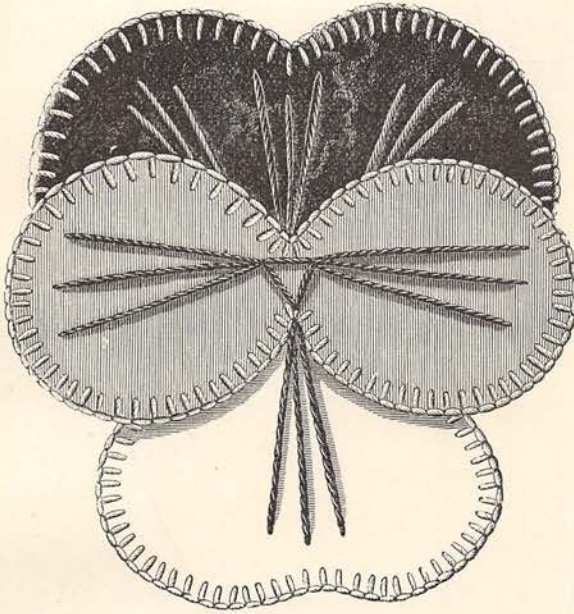


FIGURE NO. 3.—FRONT VIEW OF PANSY PEN-WIPER.

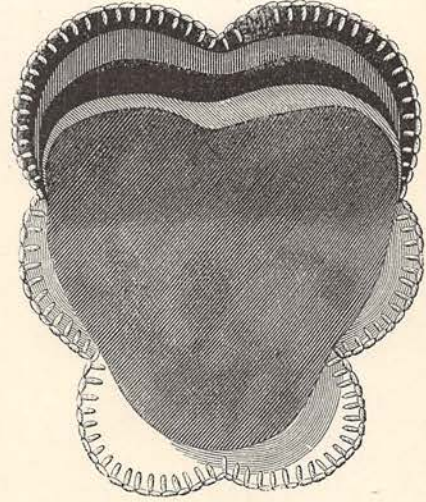


FIGURE NO. 4.—BACK VIEW OF PANSY PEN-WIPER.

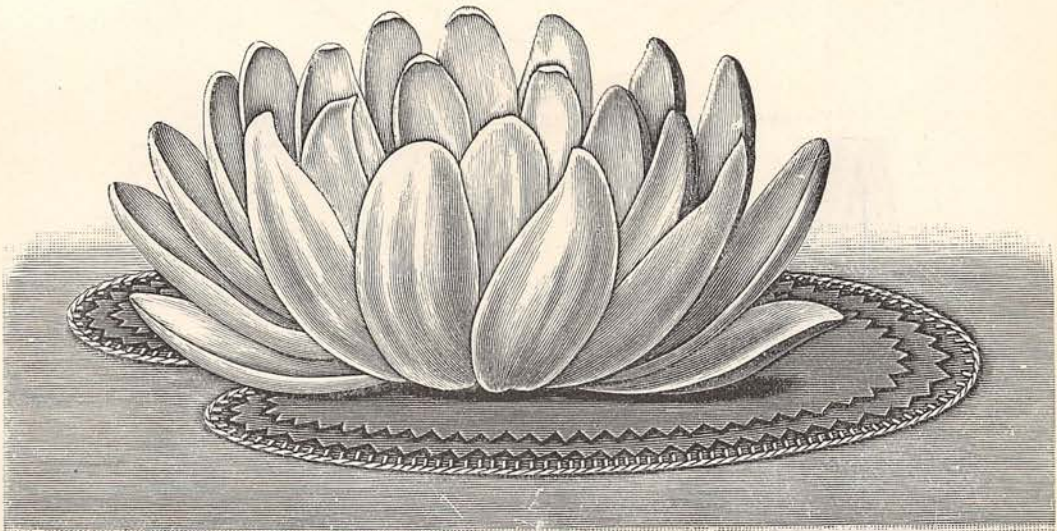


FIGURE NO. 5.—POND-LILY PEN-WIPER.

model in making the pen-wiper shown at Figure No. 5. The wipers are made of green cloth and are the shape of the floating leaves that belong

largest size. The largest leaf is finished at the edge with button-hole stitching, and the edges of the other two are pinked. The

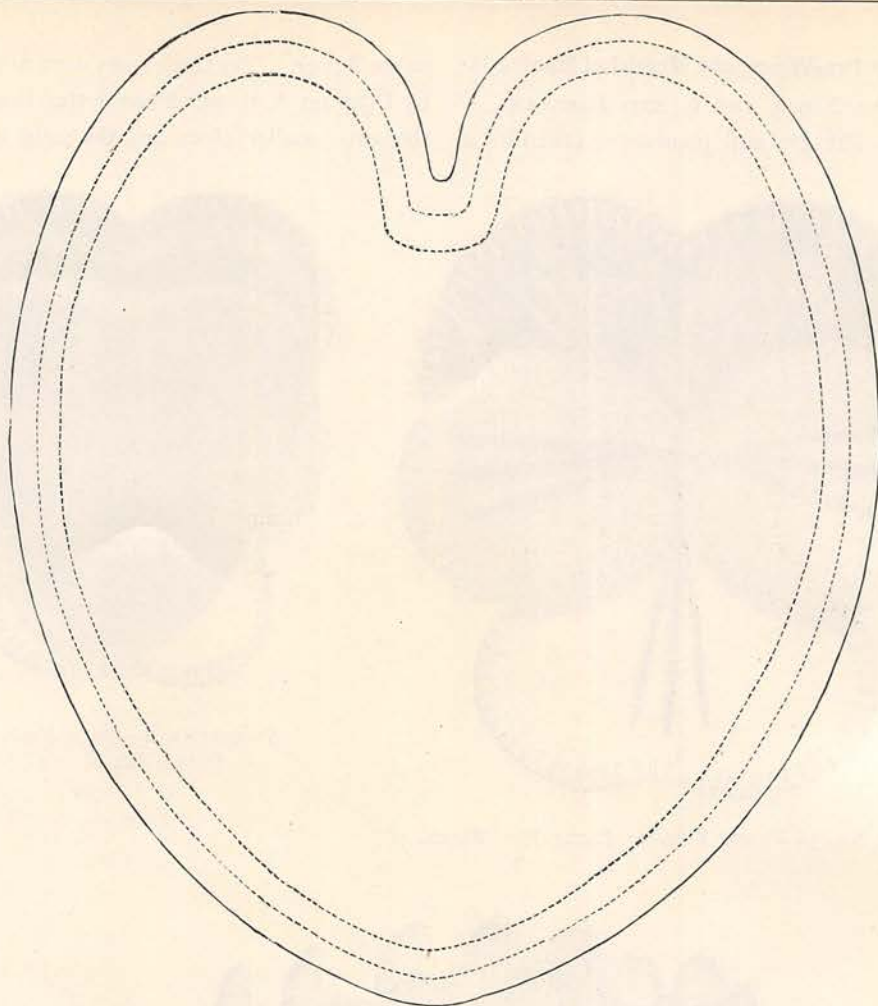


DIAGRAM A.—SIZES OF WIPERS FOR POND-LILY PEN-WIPER.

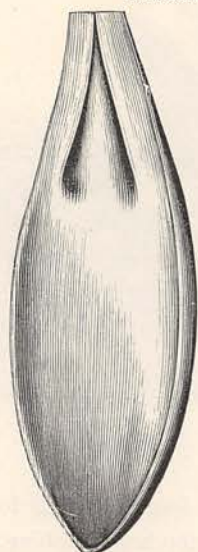


FIGURE NO. 6.—COMPLETED PETAL FOR POND-LILY.

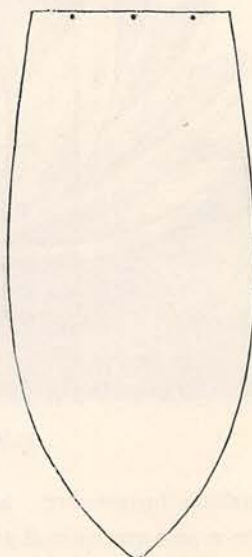


DIAGRAM B.—SHAPE OF PETALS FOR POND-LILY.

shape of the petals for the flower is shown by Diagram B. There should be two rows of petals, and white cloth is used for them. Cut as many petals as required, and in the straight end of each make two plaits as shown by Figure No. 6, bringing the two dots nearest the side edges—indicated in Diagram B—over to the middle dot. The petals are sewed at the plaited ends to a piece of green cloth, and the yellow center or pollen is made by threads of gold floss or worsted. When com-

pleted the flower is sewed firmly to the leaves near the stem end. The white, blue or pink flower may be perfectly copied by using the desired color of cloth, felt or flannel for the petals.

pleted the flower is sewed firmly to the leaves near the stem end. The white, blue or pink flower may be perfectly copied by using the desired color of cloth, felt or flannel for the petals.

As "little drops of water and little grains of sand make a mighty ocean and a pleasant land," so little scraps of silk, ribbon, velvet, etc., and little stitches made by loving hands, contribute to the making of pretty, cheerful homes, without which this pleasant land would prove a very unpleasant abiding-place. The utility of so-called "scraps" is proven by

the many beautiful articles of ornament and use made from them.

#### Fancy Pen-Wiper.

FIGURE NO. 7.—Six sections—the light, of yellow satin; the dark, of plum-colored velvet—comprise the top of this pen-wiper, each section being decorated with embroidery. The sections are carefully pieced together, and the outer edges are pinked. Underneath are placed six pieces of dark flannel, cut the proper shape and pinked, that form

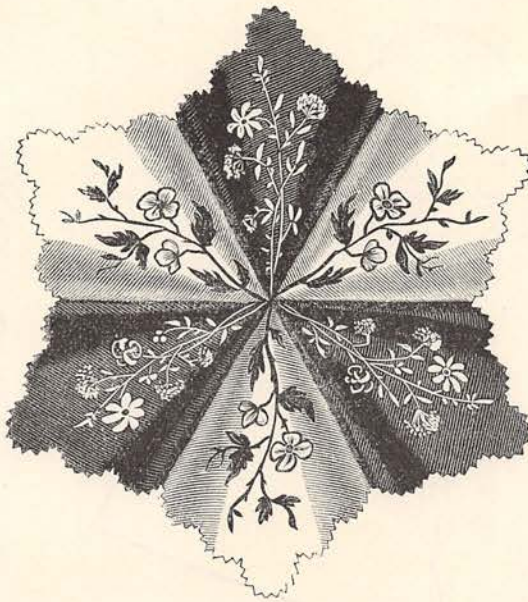


FIGURE NO. 7.—FANCY PEN-WIPER.

the practical part of the article. Any combination of colors liked may be used for such a pen-wiper, but it will be found that positive contrasts of dark and light are most effective. Care must be taken to make them neatly, or else sincere thanks will not come from the recipient—or, at least, ought not.

#### Shape of Sections.

FIGURE NO. 8.—The exact shape and size of each of the pen-wiper sections is here shown, with the design wrought on the dark section, which is that of golden rod and daisies done with embroidery silk.

**Embroidery Design for Pen-Wiper.**

FIGURE NO. 9.—The embroidery design on the light sections is here shown; it is done in pale lavender and green silks, though that may not be a faithful representation of nature. Forget-me-nots with their foliage, or any small blossoms may be selected for the floral designs.

**Pen-Wiper.**

FIGURE NO. 10.—This engraving illustrates



FIGURE NO. 8.—SECTION, WITH DESIGN, FOR PEN-WIPER.

a very handy and pretty pen-wiper. The cover, which is in book form, is made of a piece of chamois about twice as long as it is wide and bound all round with wide ribbon stitched on. The leaves or wipers are a trifle smaller than the cover but shaped the same way, and are of the chamois cut in uniform notches at all the edges. They are tacked to the cover where they fold, with invisible stitches; and a large bow of wide

ribbon the color of the binding is fastened to the fold of the cover midway between the top and bottom. The cover is decorated with the words illustrated, and the initials of the owner will take the place of those used. The letters may be done in outline stitch or with pen or brush. Ribbon of any preferred shade or kind may be chosen for the binding.

**Autumn-Leaf Pen-Wiper and Diagrams for Shaping.**

FIGURES NOS. 11, 12 AND 13.—This beau-



FIGURE NO. 9.—EMBROIDERY DESIGN FOR PEN-WIPER.

tiful pen-wiper may combine all the hues natural to the maple leaf in Autumn. Each leaf may be of one shade of the natural maple leaf, and the whole grouped artistically on a foundation shaped as shown by Figure No. 12. The wipers are all shaped like this foundation, and are pinked or notched at the edges. The leaves are veined with embroidery silks, and a pretty bow of ribbon is fastened over the top of the foundation. The

size of the leaves and the outlines for veining indicating the three sizes, only one of the are fully illustrated at Figure No. 12; the largest and two of each of the other sizes



FIGURE NO. 10.—PEN-WIPER.



FIGURE NO. 11.—AUTUMN-LEAF PEN-WIPER.

dotted and straight lines about the margin being required. Usually the leaves will be

made of velvet, plush or silk, and sometimes of with embroidery silks. The wipers may

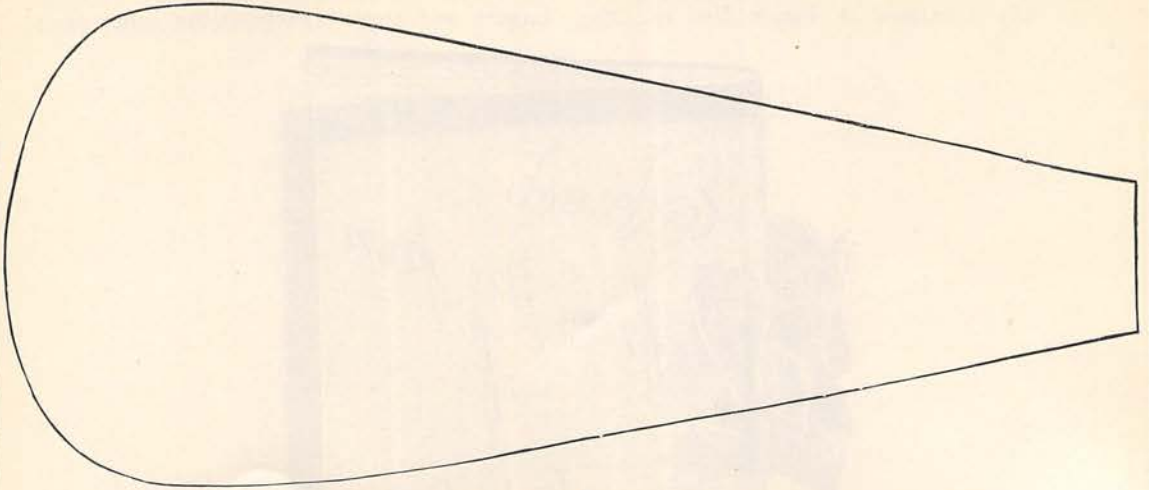


FIGURE NO. 12.—DIAGRAM FOR SHAPING THE FOUNDATION OF AUTUMN-LEAF PEN-WIPER.

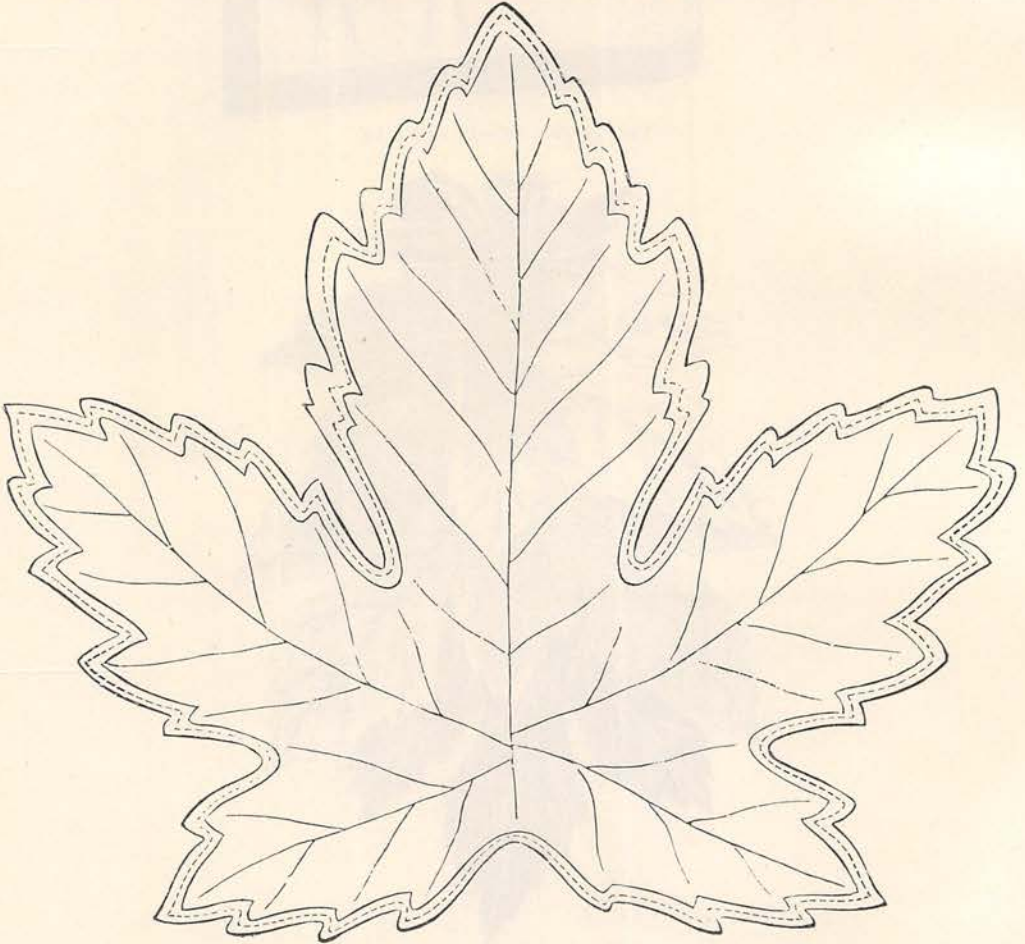


FIGURE NO. 13.—DIAGRAM FOR SHAPING THE LEAVES OF AUTUMN-LEAF PEN-WIPER.

the veining will be done by the brush instead be of cloth, flannel or some similar texture,



and may all be of one color or each may be of a contrasting color, as preferred.

When available space is limited, personal ingenuity is often taxed to know how to use it to advantage.

A writing-table that may be arranged with little trouble even in a room having but limited space, consists merely of a deep shelf with a rounding front edge supported by brackets in a corner. A covering of felt with a lambrequin or valance of the same hanging from the front edge is a suitable finish, and

ent seems quite satisfied when a blotter is suggested. This one is made in regular book fashion. The binding of pasteboard is covered with dark-green velvet, and the edges are outlined with gold cord, which is turned in loops at the back as gold would be on a veritable book. The word "Blotter" is embroidered with gold thread across the center, and a cluster of loops and ends of gold-colored satin ribbon is arranged just above the word. The sheets of blotting paper are fastened by a strip of ribbon com-



FIGURE NO. 14.—FANCY BLOTTER.

when supplied with blotters and other accessories belonging upon such an article the result cannot fail to be satisfactory. Of course any piece of absorbent paper will form a blotter, but fastidious tastes like to devise pretty shapes and ornamentations for these practical accessories, and they will find in this chapter many helps toward the realization of their desires.

#### Fancy Blotter.

FIGURE NO. 14.—The decorated blotter is certainly a pretty ornament and an article that every man and woman likes to possess. The never-ending wonderment as to a little pres-

ing through the center of the middle sheet, as in a portfolio. In this way the putting in of fresh sheets is made quite easy, and the book may be kept pretty and decorative and yet be in active use.

#### Ink-Blotter.

FIGURES NOS. 15 AND 16.—A useful and pretty accessory to a writing desk or table is illustrated in this engraving. It is formed of two pieces of cardboard, each of the size of a blotter, covered smoothly with silk, velvet, plush, satin or any pretty texture. The one for the upper side is decorated about the

edges with upright stitches of varying lengths, done with silk floss. The covered pieces are placed, one at each side of a cluster of blotters; and all are held together with two pieces of ribbon, bowed prettily on the upper side; one piece having a pretty vine design embroidered on it where it crosses the under side, and the other piece having the initials

which is also continued across the top of the folded portion and tied in a bunch of loops in each corner. Above the pocket is a spray design of flowers that gives an elaborate and dainty effect. The ornament is suspended by cords, which are tied in a bunch of loops at the point of suspension. Plush, velvet, silk, ribbon or any pretty fabric may be

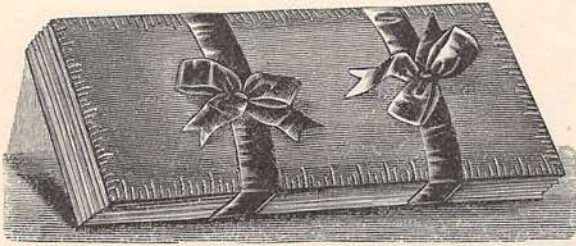


FIGURE NO. 15.

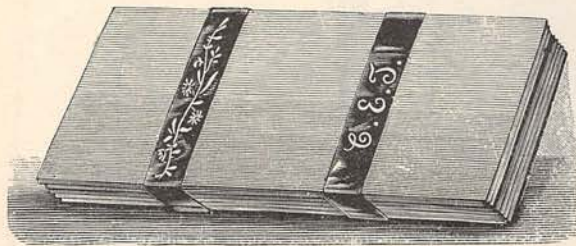


FIGURE NO. 16.

FIGURES NOS. 15 AND 16.—INK-BLOTTER.

embroidered upon it. The ribbons may be plain or fancy and may contrast in color with the outsides.

#### Ornament for Writing-Desk.

FIGURE NO. 17.—This pretty ornament is formed of cardboard covered on one side with silk and on the other side with plush; it is folded up deeply at the bottom to form a holder for the pens, pencils, pencil-scraper, etc. The edges are bordered with cord,

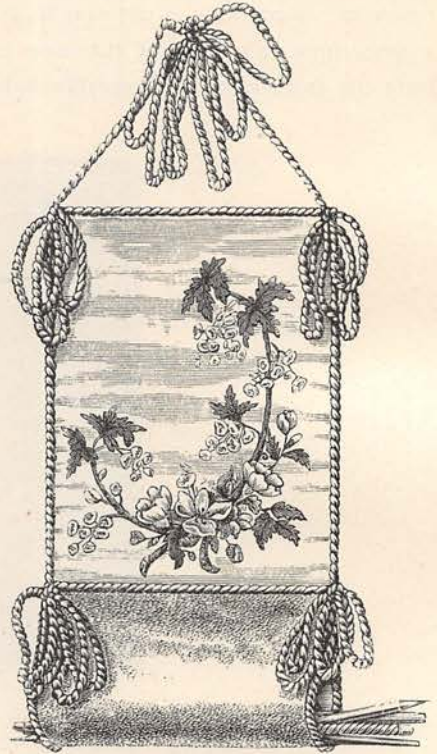


FIGURE NO. 17.—ORNAMENT FOR WRITING-DESK.

used for such articles, and the colors may be selected to please the taste. Ribbon may be used instead of cord, and the floral decoration may be painted, embroidered or appliquéd.

#### Decorated Blotter.

FIGURE NO. 18.—A large oblong of blotting paper forms the back of this blotter, and to either side edge is joined a section half as wide, the sides and ends of the parts being

held together by cords run through holes in the sides near the top and bottom and tied together in long loops and ends. The upper parts are also held together by cord arranged in a similar way at the front edges, midway between the top and bottom, and are ornamented with circles of various sizes arranged as pictured and decorated with dots and floral sprays that also extend outside the circles.

a section of blotting paper folded over like a binding, all the parts being fastened together by a ribbon drawn through near each end of the binding and tied in a pretty bow. The outer portion of the blotter is decorated with a neat floral design in water colors. Any preferred decoration may be used, pen-and-ink sketches being often preferred to water-color decorations.

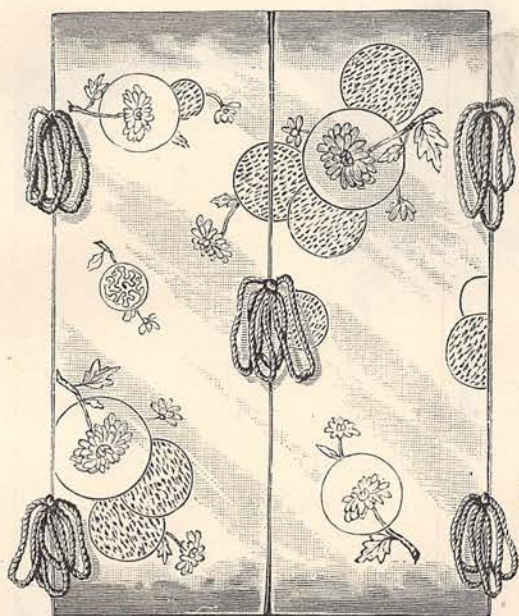


FIGURE NO. 18.—DECORATED BLOTTER.



FIGURE NO. 19.—FANCY BLOTTER.

Between the covers are one or more sheets of blotting paper arranged to slip in and out for use. The covers of the blotter may be white or tinted and may be decorated with any tasteful designs.

#### Fancy Blotter.

FIGURE NO. 19.—This engraving illustrates a pretty blotter in book form. It consists of squares of blotting paper fastened together by

#### Pocket for Stationery.

FIGURE NO. 20.—An oblong piece of cardboard forms the back of this useful and pretty pocket. It is covered on one side with velvet or plush and on the other side with satin, silk or Surah. The front of the pocket has for its foundation a piece of cardboard that is deeper than half of the back at one side and as much less than half the depth at the other side, thus having a slanting upper edge. The front

piece is covered like the back, and the parts are put together, with the satin-covered sides facing and the lower edges even. Above the front piece the back is bordered with a row of thick cord, which is also carried across the top. Tassels suspended by long cords alternating with tassels suspended by shorter

A ribbon, passed through a large eyelet worked near one upper corner of the pocket and fastened under a bow at the opposite corner, is used for suspending the pocket. Two or more colors may be introduced in pockets of this kind, and any combinations liked may be adopted. If two fabrics be not desired,



FIGURE NO. 20.—POCKET FOR STATIONERY.

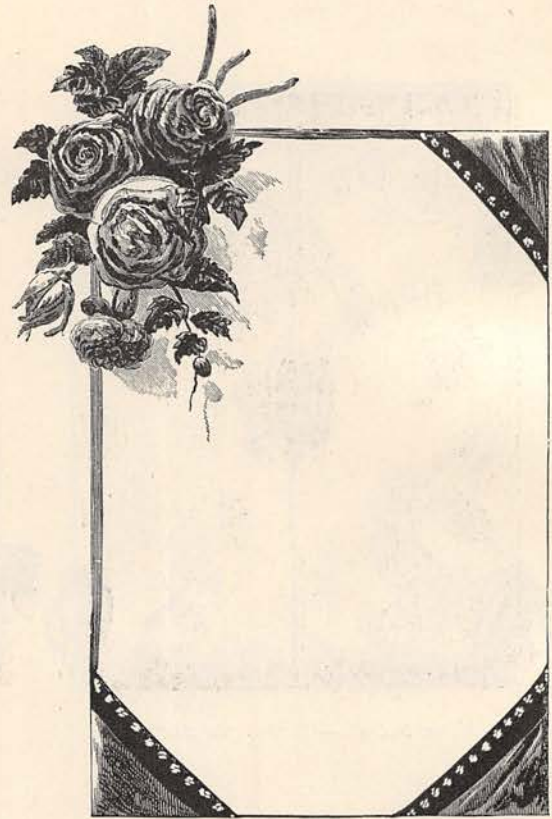


FIGURE NO. 21.—BLOTTER-HOLDER.

corde form a pretty fringe decoration for the bottom of the pockets, the tassels being arranged in alternating pairs of contrasting colors. A pretty appliqué decoration is added to the front of the pocket at the deepest side, the decoration being selected from among Kursheedt's Standard floral appliques.

the material may be the same on both sides and of different colors. Pretty crêtonne may be used for such pockets, with good effect.

#### Blotter-Holder.

FIGURE NO. 21.—A piece of cardboard just the size of the blotter forms the foundation of

this pretty article. The corners are capped by pieces of ribbon folded to form a point, but two three-cornered pieces of silk, satin, etc., joined at two sides, may be used if desired. The loose edges are bordered or bound with

and may be removed when a new blotter is desired. The caps may be painted, embroidered or otherwise decorated, with elaborate effect, in whatever way the maker's skill is best exhibited.

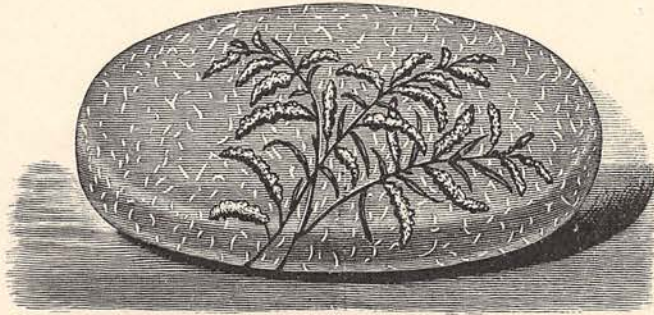


FIGURE NO. 22.—PAPER-WEIGHT.

velvet ribbon studded with gilt, silver, pearl, or other beads of any preferred shape. In one corner is attached a large bunch of roses, which, however, may be replaced by a large bow of pretty ribbon or a cluster of pompons. The blotter corners are caught under the caps

**Paper-Weight.**

FIGURE NO. 22.—A piece of stone, hand-painted as pictured, was used for this unique paper-weight. Any kind of stone may be so decorated, and it may be of any shape, but is best for decoration when smooth.

