

CHAPTER XIX.

FANS, ADAPTED TO USE AND ORNAMENT.



FANS, little and large, hand-painted or only covered with showy paper, are among the various articles which a present fancy makes highly decorative. In this chapter several pleasing devices for their use and arrangement are illustrated and so clearly described that they may be easily duplicated.

Fan Lamp-Screen.

FIGURE NO. 1.—This article, which is as useful as it is ornamental, results from a very simple device. The standard is an ordinary letter-file with a pointed prong and a round base. Over the prong is slipped the handle of a Japanese fan which, being hollow, descends until it rests upon the base. The latter is covered with a circular piece of satin gathered into a frilled finish and tied around the end of the handle with ribbon. The handle is wound with ribbon and the fan is ornamented to accord with the fancy of whoever is making it. In this instance it is covered with Silesia and overlaid thickly with finely crimped paper, which forms a fringe around the margin. Upon one side a bunch

of paper flowers is fastened. Such screens may be covered with satin and ornamented with embroidery or hand-painting. A very pretty one is made of a fan covered with dark green silk and overlaid on the outer side with buttercups nestling in artificial grass, which also covers the base. As they are not easily overturned and may be moved in any direction, they are much appreciated by those whose eyes are sensitive to strong lights.

Wall-Pocket.

FIGURE NO. 2.—Two paper fans, one considerably larger than the other, are used in making this pocket. They are opened wide, the lower portion of the smaller one being exactly even with that of the upper. Satin ribbon is then drawn through the sticks of the two, confining them together; and a pretty bow of satin ribbon, tipped with silken balls, is placed on each side of the sticks. A larger bow, with four ends, all ball-tipped, is placed at the ends of the handles, forming a pretty finish. The upper portion of the small fan is carefully tacked at each side to the larger one, and bows of ribbon are also placed there. Ribbon strings placed at convenient distance at the top of the large fan,

tie in the middle, forming a graceful method of hanging the pocket. Fans of one tint or those of contrasting hues may be selected. In this instance the upper fan is of dark sage green and the lower one of bright scarlet. The ribbons are scarlet, and the silk alternately of scarlet and sage green.

any shade, while the front part is hidden under a cover of bright terra-cotta satin. A pasteboard, shaped like the fan, forms the pocket. It is neatly fitted, and is covered on the outer side with terra-cotta and lined with pink satin. A good contrast of the two colors is shown by the slash down the center,



FIGURE NO. 1.—FAN LAMP-SCREEN.

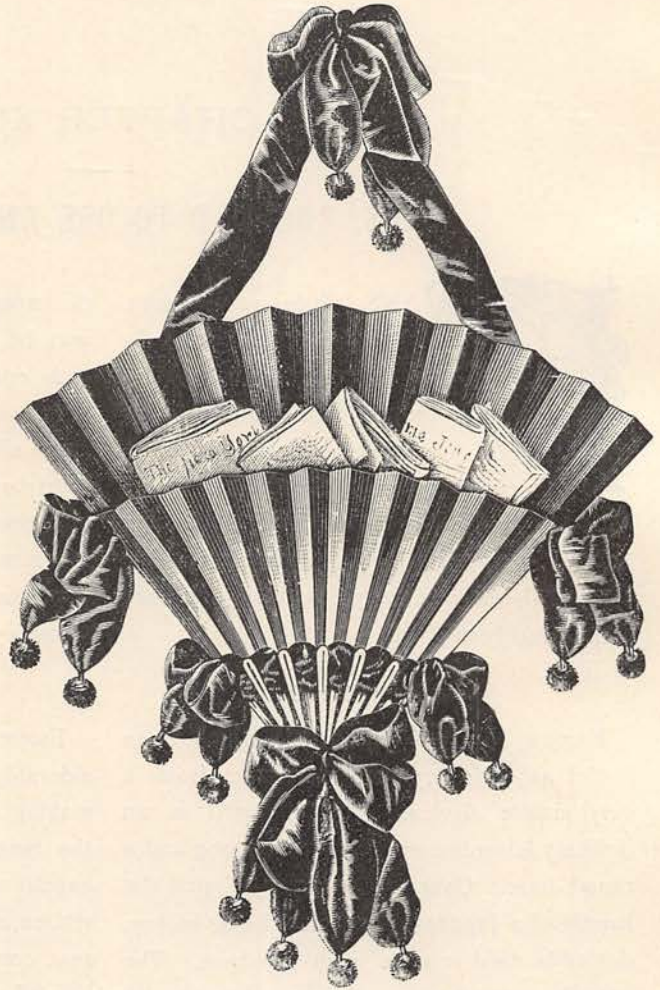


FIGURE NO. 2.—WALL-POCKET.

Fan Wall-Pocket.

FIGURE NO. 3.—A pretty wall-pocket in which to stick letters and cards is of great use, and such a one is here shown. An ordinary Japanese fan forms the foundation; and the back may be covered with Silesia of

which is turned back in V shape. At the point of this V-shaped opening is a bunch of dried grasses and flowers, and long loops and ends of terra-cotta ribbon. A similar cluster of grasses and ribbon is at each corner of the fan and on the handle. The joining of the

pocket portion to the fan is neatly hidden under a silk cord, and all the edges are finished in the same manner. Sage and pale blue, and cardinal and pale blue, will be found very pretty combinations for such pockets.

Fan Wall-Pocket.

FIGURE NO. 4.—The foundation of this pocket is an ordinary Japanese fan, which

from time to time suggest themselves to the housekeeper, when there are trifles in the way and no time to put them out of the way. The pocket may be of any pretty material.

Decorated Fan.

FIGURE NO. 5.—A large palmetto fan is used, and is smoothly covered on one or both sides with velvet to within some distance of the handle, the rounding margin of the velvet

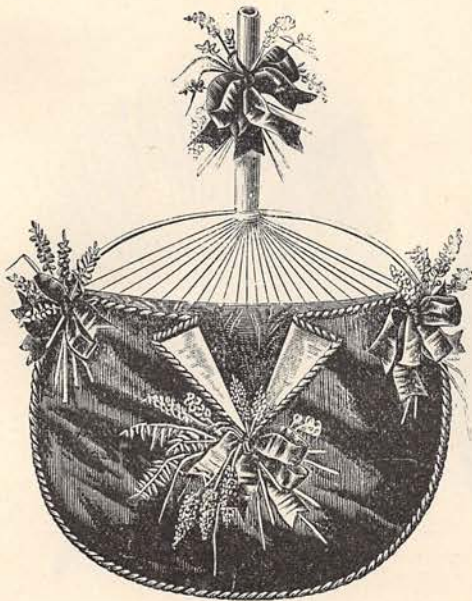


FIGURE NO. 3.—FAN WALL-POCKET.

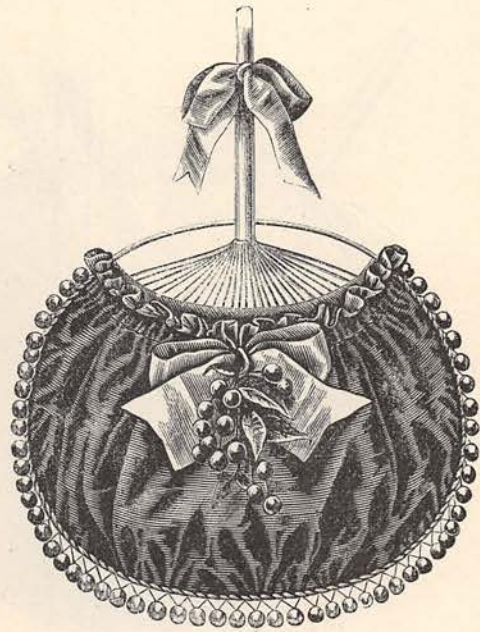


FIGURE NO. 4.—FAN WALL-POCKET.

may be purchased for a trifling sum. One of its sides is covered with a full, flat pocket of satin that is whipped to the reed about the edge in over-and-over style, after which a border of bead fringe is added. A bow of ribbon and a cluster of cherries are caught at the center of the top, and another ribbon is tied about the handle over a hole bored for a string by which to suspend the pocket from the wall. The pocket is useful for collecting scraps, holding papers and letters, and a multitude of other little things which will

being bordered with a silk cord. Above the velvet it is covered with silk, satin or Surah, or perhaps with Silesia, which is shirred in around the handle with a little frill finish at the top. Over the velvet a spider's web is formed with gilt or silk floss, and old-man spider himself may be purchased in some metal and fastened on. Then the cat-tails and grasses, which have been so carefully collected during the summer in the country, are artistically grouped and fastened to spread prettily over the fan just above the

web. Any preferred garniture of embroidery or hand-painting may be applied, instead of the web and spider.

Decorated Palm-Leaf Fan.

FIGURE NO. 6.—A simple palm-leaf fan of good size is carefully painted with gold liquid paint and beautified by a cluster of three ostrich tips fastened to droop gracefully near

or artificial flowers may be used instead of the feathers, if preferred.

Ornamented Punkaj Fan.

FIGURE NO. 7.—This fan is large and graceful-looking, and has a long, thick handle turned to one side. A strip of pale-gold cloth decorated with fancy stitches done with floss is applied all along the top. To the lower



FIGURE NO. 5.—DECORATED FAN.



FIGURE NO. 6.—DECORATED PALM-LEAF FAN.

the handle and a strip of ribbon passing from under the tips along the side, terminating under the edge. The tips may be some that have done service on a hat or bonnet, and the ribbon may match or contrast with the tips and be of any preferred variety. Such fans are fastened against the wall or artistically placed on the table or mantel, where they form effective backgrounds for dainty statuettes, small vases, etc. A bunch of paper

part at the left side is added a crescent-shaped section of the same fabric decorated along its lower edge with fancy stitches and attached to the fan with large fancy stitches; this forms a pocket for papers, work, etc. A very wide ribbon is tied in a bow about the handle. Japanese figures are painted or inked on the leaf. The cloth may be of any color preferred, or velvet, plush, satin, crétone, etc., may be used instead. Such fans

are usually made to stand against the wall in some corner where they will be effective, and

Fan Wall-Pocket.

FIGURE NO. 8.—A large Japanese fan and

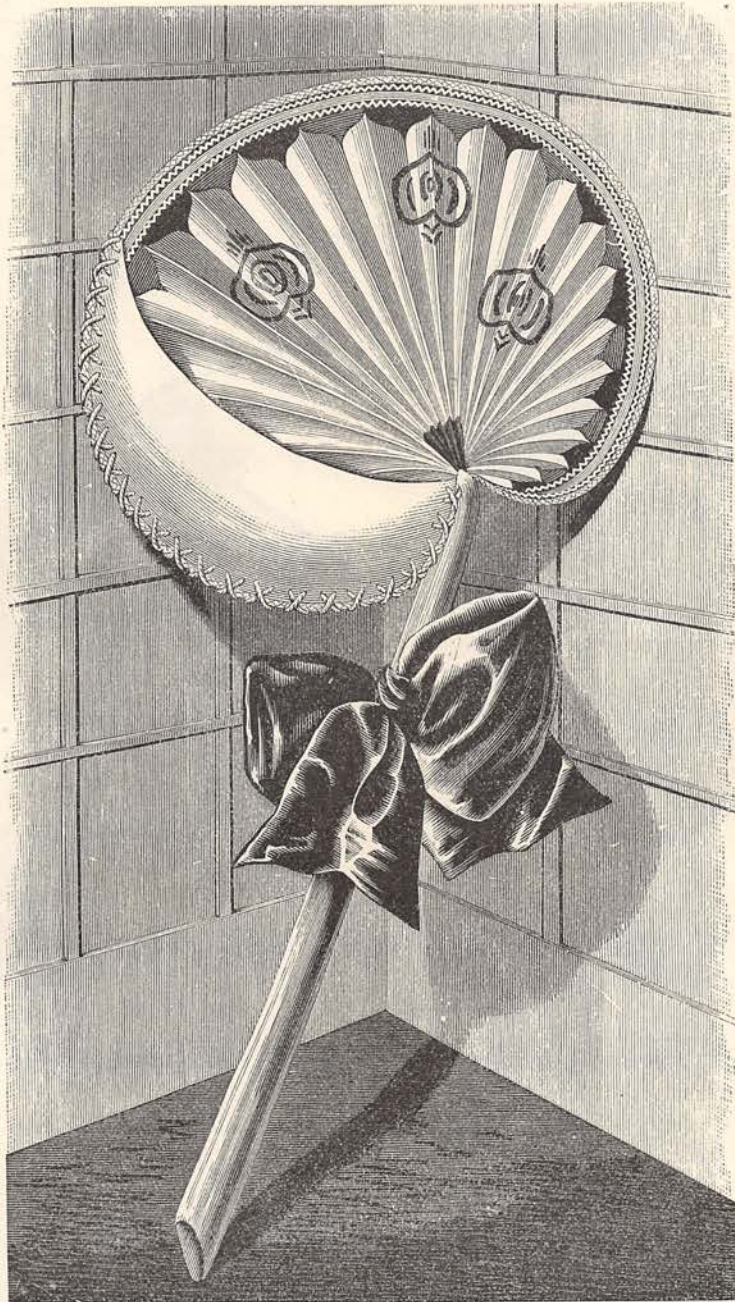


FIGURE NO. 7.—ORNAMENTED PUNKAJ FAN.

are often richly embellished with peacock feathers, painting, embroidery, etc.

a similar fan of much smaller size are joined together by ribbons to form this ornamental

wall-pocket. The handle is removed from the larger fan, which is firmly secured at the bottom to the smaller one. Two pair of ribbon ties are sewed at suitable intervals to the fans at one side and tied in pretty bows so as to hold the fans in place; and a narrower ribbon is run through the fans at

Whisk-Broom Holder.

FIGURE NO. 9.—A Japanese fan of the usual kind constitutes the foundation of this holder. It is almost covered with deep crimson satin, and the joining to the fan is concealed under a heavy cord of silk. Two strips of ribbon are arranged across it as

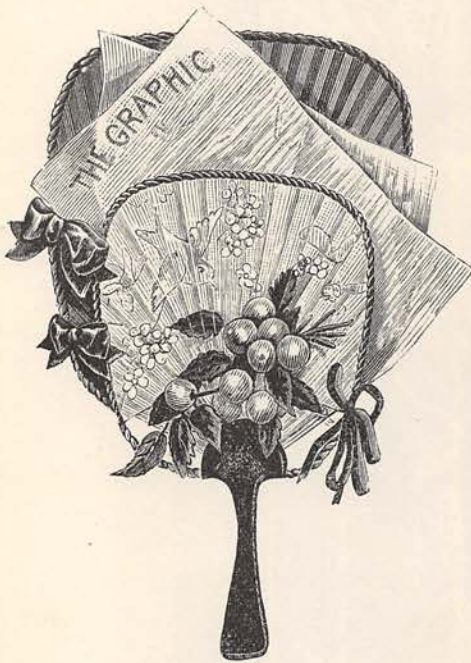


FIGURE NO. 8.—FAN WALL-POCKET.

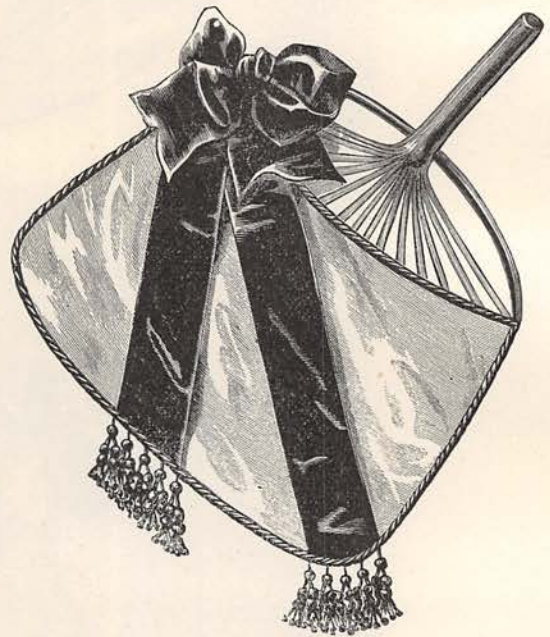


FIGURE NO. 9.—WHISK-BROOM HOLDER.

the opposite side low down and loosely tied. A cord edges the fans all around. A bunch of bright fruits and their foliage is fastened just above the handle. Sometimes the fans will be covered with Watteau, striped or figured silks, though they are sufficiently decorative in themselves.

shown in the illustration, the ends being caught under the cord; and a fringe finishes each one prettily. At the opposite ends, which meet at one corner of the fan, is a bow of satin ribbon, and then, when the ivory-handled brush is inserted, the whole effect is extremely good.

Fan Scrap-Bag.

FIGURE NO. 10.—This pretty bag is made of a large Japanese fan, from which the rivet has been removed. The fan is doubled so

fastened at the upper ribbons, pass along the sides of the bag, and, after being left long enough to form suspension ties, are bowed prettily together. The fan may show any



FIGURE NO. 10.—FAN SCRAP-BAG.

that the ends meet, and through the holes that formerly held the rivet is run a cord that holds them closely together. Ribbon is run in and out about the fronds, and ribbons,

design and combination of colors preferred, and the ribbon may be of any hue and be plain or fancy, as desired. A blue fan, with pink ribbons, is pretty.

