

## CHAPTER VIII.

---

### WORK BOXES AND BASKETS.

---

A TASTEFUL parlor is not completely finished until the useful little work-stand is made, and furnished with box and basket. Both these necessary accompaniments to the corner devoted to the sewing machine, may be made of various styles and shapes. Very elegant articles of the kind may be purchased, of course, but as with most elegancies, the majority of ladies do not possess the means to indulge in expensive adornments, even though they be useful as well; such are glad to be able to fashion pretty and convenient articles for themselves. Work-boxes may be adorned in various ways; described in the chapters on Fancy Painting, Inlaid Work, Rustic Work, etc., and can be finished in a manner, at once so artistic and perfect, that they compare favorably with the most exquisite imported work. A handsome rustic box may be made as follows: Procure one of the long cigar-boxes, and loosening the edges, carefully take it entirely apart; preserve the long pointed nails, as they will be required in joining it again. Cover each part of the outside with a composition of beeswax, tallow and rosin; while sticky, arrange upon the front and end pieces clusters of the smaller nuts, such as filberts, chestnuts, pecans, etc., with peach and plum stones. Cut card-board in shape of leaves; cover with the cement, and arrange scales of pine cones, or strips of bark, upon them to appear as leaves; or these may be made of leather, as directed in chapter on Leather-Work. Upon the top of the box form a larger group of nuts, such as the English walnuts, Brazil-nuts, Buckeyes, etc., making a foundation with putty, colored with burnt umber. Let the leaves for this cluster be larger, and towards the edges of the cluster, place the smaller nuts and clusters of berries, made from cherry-stones, chinquepins, or seed from various flowers.

Fasten the leaves, tendrils, etc., so that they will not be loose, and catch in surrounding objects. Around the edge of each piece, place a row of the tops of poppy-seed pods; beyond these a row of plum seeds halved, by being baked in a warm oven. Within this row, one again of the poppy; fill in as a ground-work

with grains of the small, purple "pop-corn," using those of uniform size, and placing evenly in rows; or the ground may be made of browned coffee-grains. Stiff glue will be found necessary in fastening down many of the pieces, touching them slightly with it, and laying a weight upon them until dry. In the corners, fasten small clusters of two or three nuts, halved or entire. When dry, varnish with Copal.

Cut strips of thin wood, one-sixth inch deep, to extend around the ends and front of the lid; fastening it firmly, first with glue, and then by passing thin "wire-nails" through into the lid; around the outer edge of the lid fasten a beading of coffee-grains, which will extend beyond this strip. These narrow pieces upon the inner edge of the lid, must be on the inside of the box when closed. Upon the inner side of the lid, within this rebate, place a piece of mirror or a tasteful picture, fastening with a narrow strip of card glued against the rebate, and covered with narrow gilt paper; line the bottom, sides and ends with velvet, touching the edges with glue; and fasten the pieces together with glue and the nails previously extracted. Make proper divisions for the various articles, by covering thin strips of wood or pasteboard, with the velvet, and fastening in with glue upon the edges. The cards of thin wood, upon which lace, cord, etc., are rolled, are appropriate for this purpose. Needle-book, pin-cushion, thimble-case, scissors-sheath, emery-basket, cards for silk, etc., case for yard measure and a little fancy basket for "trifles," should be tastefully made, and arranged on the inside. The lid may be fastened on with little brass hinges, or a strip of strong cotton covered with velvet, may be glued, first to the lid, and then to the back, previous to putting on the lining. Three small round nuts, with a larger one in the center, must be fastened to each corner, and will form pretty feet. When neatly finished, this is a handsome box, and has been mistaken for carved wood.

Another elegant box is made of one of the plain pine boxes, to be obtained at any drug store. This is rubbed smooth with sand-paper, then varnished, and when perfectly dry, rubbed off again with fine emery-paper; then, re-varnished with black Japan varnish, dried and rubbed smooth again with rotten stone and turpentine, with a hard pad, made of a roll of flannel. This rubbing and varnishing is continued until the surface is as smooth as possible; wash perfectly clean after each rubbing, that no particles of sand remain. The last rubbing is performed with a clean flannel pad, dipped in clear water and then in finely-powdered pumice-stone; when finished, the surface must be as black and polished as the finest and hardest piece of papier-mache. This done, a design is drawn upon paper pricked upon the outlines with a pin, and held in position; finely-powdered plaster is dusted upon it, which leaves a white outline upon the black surface; which is made more permanent by being gone over lightly with a white crayon. The design is then painted with sealing-wax paint, in a scroll design, similar to Fig. 1, for the front, which is one-half the design. A num-



ber of wide-mouthed bottles are procured; those used by druggists are admirably adapted to this purpose; these are partially filled with various-colored sealing-wax, and sufficient "ninety-five per cent. alcohol" added to dissolve these; a small brush should be used for each color. The stiff-bristle brushes, made of fine, flexible bristles, should be used for this style of painting; and by shading and arranging the colors with taste, this work may be made to resemble enameled work. Pieces of pearl, gold and silver foil, and bronze, are all beautiful additions, and may be applied as described in the respective chapters on Gilding, etc.

The inside of this box has a case made to fit the lower half. The four sides are covered with light blue silk, sewed together, and then to the bottom, which is covered in a similar manner; this is then fitted into the bottom of the wooden box, forming a ledge upon which to rest the tray, though when made of card, it



Fig. 1. Decoration for Cover of Work-Box.

will be better to fasten a narrow ledge of wood *above* this case; it may be painted or covered with velvet or silk. The upper tray must be made of strips cut to fit within the box above the aforesaid ledge, lined neatly with silk and divided into various compartments. The various "knick-knacks" suitable for ladies' work. Directly in the center, make a case with loose lid to be lifted by a ribbon; upon the top of this lid, form loops of ribbon in which to place the bodkin, stiletto, knife, etc. A neat case for the thimble is made by covering a strip of card with velvet and sewing the ends together, leaving the velvet rather longer than the card; gather together at the bottom, and sew into a box with circular hole cut in the center, hiding the stitches with narrow silk chenille.

The lid is finished upon the surface like the sides, painting similar flowers and scrolls in the corners; upon the center, as a handle wherewith to raise it, fasten a group of nuts, painted and gilded similarly to the other work.

Tack a rebate around the front and ends of the under side, finishing in black enameled painting. Place a mirror within this rebate, fastening it in with strips of painted or gilded wood.

Another beautiful mode of ornamenting such a box is by painting groups of flowers upon white satin; two for the front, one upon each side of the key-hole, one for the top, and one for each side; fasten them by gluing along the edges; cut card-board to fit each piece of the box, cutting out recesses for the satin in scroll shapes, binding the edges with gilt paper pasted neatly around, after covering with black or purple velvet or bronzed paper or morocco. A complete case is thus formed for the box, which placed over and fastened with glue, frames the pictures upon the satin, and has a beautiful effect. The lid must have an edge formed around it with the card, which will cover the edge of the board, as it is of heavy wood. The interior is finished as the former.

Still another tasteful mode is by covering with shells. A layer of putty is first applied, then the shells, arranging them in tasteful groups, or forming into flowers. In forming roses, tiny dolls' heads placed in the center form a beautiful addition. The shells may be colored with water-colors, if desired. After fastening on the flowers and large shells, the ground-work is formed of small rice-shells. Small work-boxes, suitable for the sewing-machine, may be made of the common oblong cigar-boxes, which can be covered with paper or chintz, lined and arranged to hold the various spools, bobbins, gauges, etc., used daily. The machines not furnished with tops, and consequently devoid of drawers or cases, may have such boxes arranged and fastened upon the table, and thus save many a long search for missing articles.

#### WORK-BASKET.

Wicker-baskets of all kinds have become so popular and cheap, withal, during the past few years, that almost every house is furnished with its work-basket, more or less tasteful. Yet there are some, perhaps, who may be glad to own a tasteful, home-made article, and to such the following directions may be of some value, if merely as a guide.

#### BASKETS.

For the foundation, cut out an octagonal piece of heavy pasteboard, for the bottom, ten inches in diameter, and eight pieces seven inches high, three inches wide at the bottom, fitting each section of the bottom, and sloped out to seven at the top, rounding off the upper corners. Cover all with bright glazed chintz, buff, blue or pink, and sew neatly together. Make a pocket for the upper part of each section, cutting the material wider than the section to which it is to be sewed, in order to gather it in.

#### STANDING WORK-BASKET.

For the bottom of this basket, which is shown in Fig. 2, we have used an or-



dinary "cheese-box," fourteen inches in diameter; and this will be found to answer as well as a more elegant article. Line this box neatly as a receptacle for various articles, such as rolls of "pieces," trimmings, etc. Upon the lid make a cushion, stuffed with wool or hair, and upholstered with merino, velvet, or other suitable material, fastening down in diamonds, with fancy buttons. Next form the uprights with "skirt-springs," retaining the cover, sewing five of them together. The two side-pieces are sufficiently long to reach from one to the other, as shown in the illustration, forming an arch between each two, and are painted buff; while the center one is carried to the top of the basket, and must be three and a half feet in length, painted black; the two pieces between these are crossed over each other, and bound to the black central strand, with fine flexible wire; then turned upward, and continued upward along with the black one. The arrangement of these strands will be plainly seen by the illustration. Gather them closely together a few inches above the point, where the inner strands are bound, and fasten closely together with strong, flexible wire, covering with a band of the "hoop-spring," neatly painted, and wound closely round. Strong, firm hoops are required both at the top and bottom of the basket, covering them with any bright-colored material; scarlet or blue look well in contrast with the buff and black case. The lower one, fourteen inches in diameter, is fastened to the hoop-springs above the point of junction, from which the side-pieces are crossed, and the center one carried straight up; here the hoop is fastened; and the wire, side by side, carried up four inches, bound together, and the side ones taken and fastened in a point to the upper hoop; the black center one also fastened to it, midway between each point; then the three cut off closely, and the edge finished with a thick cord of silk or wool. The basket is made of a circular box, covered with a bright shade of merino, or tastefully painted or papered; then lined and furnished. The lid is ornamented with a square of the merino, scalloped around the edge, and a bouquet of crocheted flowers fastened on the center. The handle consists of five strands of

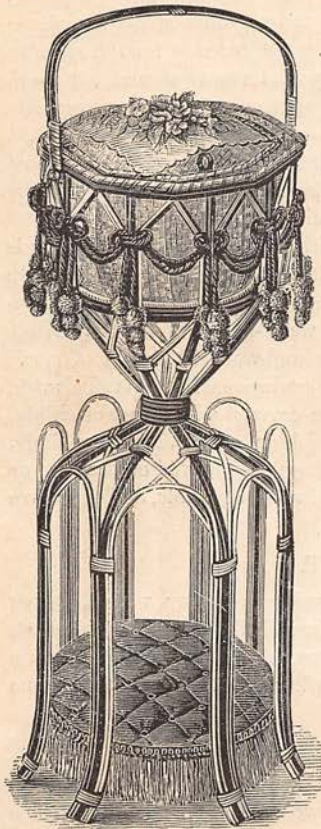


Fig. 2. Lady's Work-Basket.

the black center one also fastened to it, midway between each point; then the three cut off closely, and the edge finished with a thick cord of silk or wool. The basket is made of a circular box, covered with a bright shade of merino, or tastefully painted or papered; then lined and furnished. The lid is ornamented with a square of the merino, scalloped around the edge, and a bouquet of crocheted flowers fastened on the center. The handle consists of five strands of

“hoop-spring,” corresponding with the case; woolen cords and balls are looped and knotted to each upright, around the basket.

Care must be taken to bend the wires into proper shape, and to facilitate this, the central strand may be of heavy wire, if preferred, which is more easily bent into shape than the stiff “hoop-springs.” The painted work must all be neatly varnished.

### STANDING WORK-BASKET.

For this basket, Fig. 3, take four lengths of “hoop-springs,” and two of strong, heavy wire (or three canes may be substituted, if desired) four feet long; sew the “springs” together two and two, and the wire between them, using strong thread, and sewing closely. In the same manner make connecting pieces for the feet, sixteen inches long, binding them securely to the lower part, and bending the legs and these connections into proper form as shown in the illustration. Six inches from the bottom, resting on the connecting arched pieces, the lower basket is placed. These baskets are made of heavy paste-board, richly ornamented with enameled paper and pictures, or covered with velvet or muslin, elegantly embroidered. This lower one is lined with quilted silk, and finished with cord and loops.

The stiff wire feet are then continued up the center of the stand to the top, where a strong hoop holds them in place, and upon which the upper basket is fastened. A long strand of “hoop-spring” is sewed round this covered hoop, and bent into loops two inches apart. This basket is furnished with a lid, with embroidered or ornamental top, and neatly lined with silk, and arranged with all the paraphernalia of a lady's work-basket. A number of tassels with cords, are festooned around



Fig. 3. Standing Work-Basket.



the lower part, and knotted through the wire loops; also fastened in the ornamental rings upon the four corners of the uprights.

#### WORK-BASKET WITH STAND. — FIG. 4.

Use gray linen, five yards of red worsted braid, one and one-fifth inches wide; four yards of red worsted soutache, three-fifths of an inch wide; red thread, coarse brass wire, pasteboard, etc. The frame of the basket, which rests in a stand of simple wicker-work, is constructed of wire. Of the three rings of

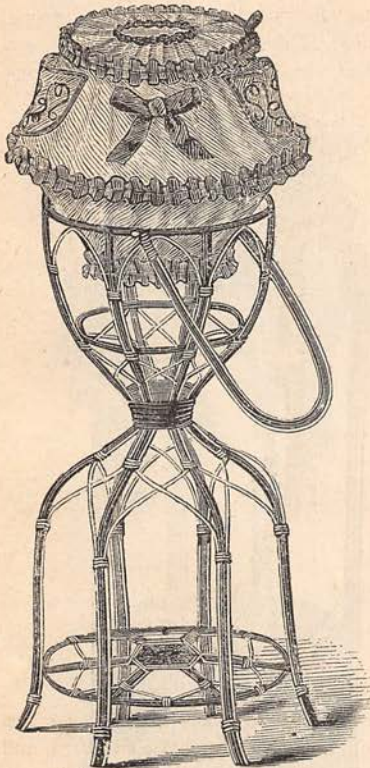


Fig. 4. Wicker-Basket.

wire, the one for the bottom is eight inches round, the middle one thirty-two and four-fifths inches, the top one nineteen and one-fifth inches. The three lengthwise rods that connect the rings to each other, are each ten inches long. All these parts are soldered together. Fill up the smallest ring with a circle of pasteboard, taken double, of corresponding size, covered on each side with gray linen; then cover the whole frame with a piece of linen thirty-three and one-fifth inches wide, and ten and two-fifths inches long; sewed together, gathered in at the top and bottom, and bound with red worsted braid, where it is attached to the rings. The upper half of the basket is decorated with three somewhat raised pockets of linen, rounded at the bottom, four and three-fifths inches long, and three and three-fifths inches wide; decorated in the center with an arabesque, braided of red worsted soutache, and bound all around with red woolen braid. The spaces between the pockets are adorned with bows of red braid. The cover of the basket is cut of card-board, to fit exactly into the top ring, and covered with a piece of gray linen, passing smoothly over the inner side, and

gathered in at the middle of the outer side, where the gathers are covered by a circular piece of gray linen, one and three-fifths inches in diameter, edged with a ruching of scarlet braid. The cover is fastened to the basket with hinges of soutache; the means of fastening consist of a loop of soutache, and a hook. The basket is decorated with ruchings of scarlet braid in the manner

the illustration indicates. The ruching for the bottom is sewed to a steel spring, ten and four-fifths inches long, closed to a ring, and covered with gray linen.

#### WORK-STAND.

For materials, use green satin, four green chenille tassels, each four and two-fifths inches long. This stand, which is twenty-eight inches high, is constructed of cane, stained black and yellow, and contains two baskets, each twelve inches



Fig. 5. Work-Stand.

square and four inches deep. The upper basket is provided with a cover, fastened on with hinges. Quilled satin lining, and the same color silk cord, and chenille tassels complete the decoration of the baskets. An embroidered monogram and medallion, arranged in the manner the illustration indicates, make it very suitable as a gift to present to a friend.

#### NEGLIGE BASKET.

A woven wicker-basket, oval in shape, about fifty-four inches wide at the top, is provided inside and out with a thin layer of batting; over this, draw some



bright-colored lining, and over the latter smoothly, with sprigged Swiss muslin; where this is sewed on, cover with a narrow insertion, run through with satin ribbon. The hollow pockets at the sides of the basket, are made of colored muslin, lined with stiff crinoline, and covered with a puffing of sprigged Swiss



Fig. 6. Neglige Basket.

muslin; they are finished off at the top by plaited lace, about one and two-fifths inches wide, and narrow insertion run through with satin ribbon. The outer decoration of our model consists of a five-inches-deep flounce of tulle garnished with applique, and lace, one and three-fifths inches deep. Rings wound about with colored ribbon do duty as handles; a ruching of satin ribbon, one and one-half inches wide, and bows of narrow and wide satin ribbon, complete the basket.

#### BASKET WITH LAMBREQUIN.

Materials: For the foundation, black; and for the applications, light blue and red cloth; white, golden, yellow, dark red, light blue, purple, black, and two shades of green floss-silk, which is to be taken double. This elegant basket is of brown varnished wicker-work, ornamented with yellow cane. The lambrequin is embroidered in oriental style, with chain, long, and knotted stitches, and the applications, light blue side-stripes and red center-piece, are fastened to the black ground by white chain-stitches close to the margin. The three single figures on the side-stripes are surrounded by golden yellow arabesques edged with white, and the long stitches within them are of red, while the elongated branch and the five long stitches at the top, are black. A row of light blue chain-stitches marks the lower edge of the lambrequin between the stripes, and borders and crosses the red application, which, in its four curves, is embroidered alternately with black and white, and black and green long stitches, and in its center with black and yellow. The interlaced ring below the application is of yellow, with purple knots, and the center star is of red and white. All the

arabesques are of dark green; the clover-leaves purple with yellow veins and light green stems; the border is dark red, interspersed by white curves.

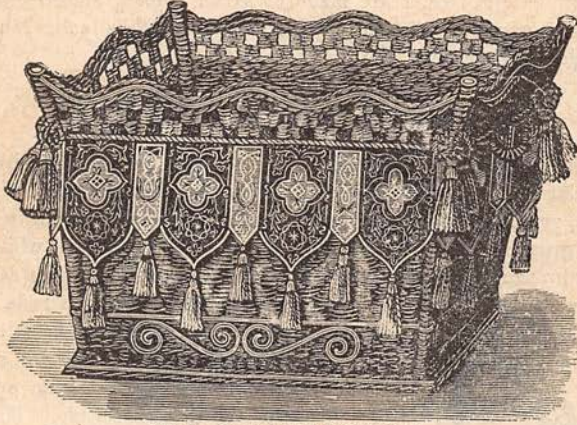


Fig. 7. Basket with Lambrequin.

#### KEY OR WORK BASKET.

This pretty basket of black, polished wicker-work rests on curved feet, and is decorated on each side with a medallion of white cloth with embroidery of colored silks. The inside of the basket is fitted with walls of card-board covered with green silk on each side, sewed together with overhand stitches, and sewed

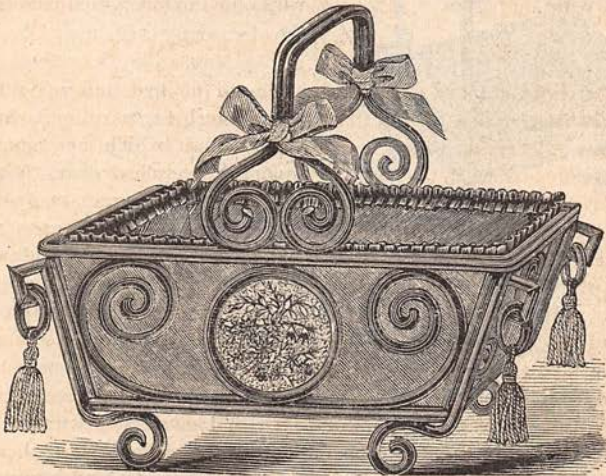


Fig. 8. Work-Basket.



to a card-board bottom, covered on the lower side with black, on the upper, visible side, with green silk. The bows on the handle and the ruching on the inner margin of the basket are made of green ribbon, four-fifths of an inch wide. Tassels of green twist-silk, each one and two-fifths inches long, complete the decoration of the basket.

### TOILET OR WORK BASKET.

Use black, polished, round wooden or bamboo rods, an inch in circumference, two thin plates of wood four inches long and two and three-fifths inches wide, white satin, green velours, shaded green, pink, purple, and brown twist-silk, fine gold cord, green silk ribbon one-fifth of an inch wide, four white Venetian beads, four bronze rings, stout card-board, small steel tacks, white sewing-silk.

The frame of our model is constructed of four pillar-like rods, each eight inches long, and holding between them two boxes, each consisting of eight wooden or bamboo rods and a thin, wood bottom four inches long, and two and three-fifths inches wide. The lower box which is one and four-fifths inches high, requires four rods five and three-fifths inches long, and four rods four and one-fifth inches long. The upper box, which is two and one-fifth inches high, is of exactly the same size at the bottom, while for the top, which curves outward, the two long rods must be each six inches long, while the cross-rods require a length of five and one-fifth inches. Small steel tacks connect the various parts; those which are arranged into squares are notched where they intersect. Each of these squares encloses a paste-board box covered with green velours on the inside, and on the outside with white



Fig. 9. Bamboo-Basket.

satin, decorated by an embroidery of colored silks. The box is fastened at the top to the rods by means of overhand stitches of gold cord, making the rod appear as if twisted with the gold cord. The bows decorating the upper corners of the boxes are made of green ribbon, ten inches long, sewed to the rods in the middle and then tied. The handle, which is fastened to the upper box by means of steel tacks, and is decorated with two ribbon bows, measures fifteen inches in length, and is to be wound about with gold cord. The four pillars are decorated at their tips by Venetian beads resting on bronze rings.



## CASKET WITH PIN-CUSHION.—FANCY WORK.—FIG. 10.

Use gray linen, black oil-cloth, red satin and twist-silk, gray yarn, black soutache, very narrow black ribbon, black braid two-fifths of an inch wide, cord elastic thick card-board, batting, gum-arabic. This casket is constructed of card-board; the bottom and cover are five-sided, each side six and two-fifths inches long; the five sides are each one and one-fifth inches high, and six and two-fifths inches long; these parts are covered on the side, which is to be the inner, with black oil-cloth, bound all around with black braid, and the sides sewed to each other and to the bottom with overhand stitches. The



Fig. 10. Casket.

The cover and sides are now covered with gray linen—for the sides the stuff is cut bias—and five arabesques cut according to Fig. 11 of black oil-cloth are pasted

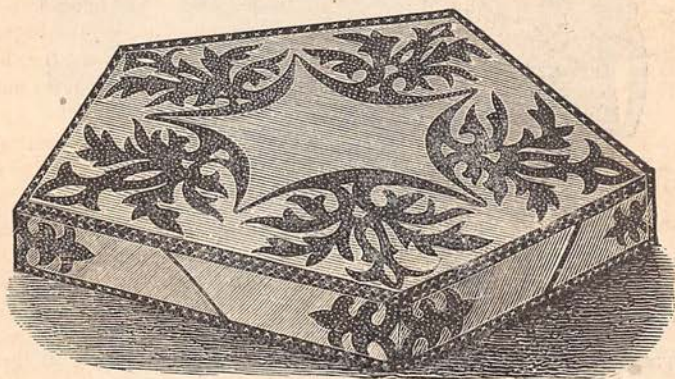


Fig. 11. Top of Casket. Arabesque Patterns.

to the cover. Double arabesques constitute the decoration on the corners of the sides. The latter and the cover are bound all around with a strip of black oil-cloth fastened with gray yarn cross-stitches. The casket is arranged on the inside into five compartments to hold the various sewing-materials, tape, cotton, buttons, etc.; the center is filled up by a pin-cushion made of batting and red satin. The cushion is finished off all around by black soutache. The compart-



ments in the casket are formed of a strip of card-board of the height of the casket, covered on each side with oil-cloth, and tacked at equal distances to the sides. Overhand stitches connect the cover to the casket on one side. Two straps of black ribbon, each six and four-fifths inches long, sewed to the casket in the manner the illustration indicates, hold the cover in an upright position. The casket is closed by elastic nine and one-fifth inches long, sewed to the cover. Instead of the arabesque on the front of the casket, a monogram, likewise cut of black oil-cloth, has a very pretty effect. The latter is decorated with ornamental stitches.

### TOILET-BASKET.

Any old basket may be arranged into the pretty and handy toilet-article Fig. 12 represents. The pockets at the sides are convenient for holding jewelry, collars, cuffs, etc., taken off before retiring. The basket is covered inside and out with white dotted Swiss, lined with colored silk or paper muslin. The

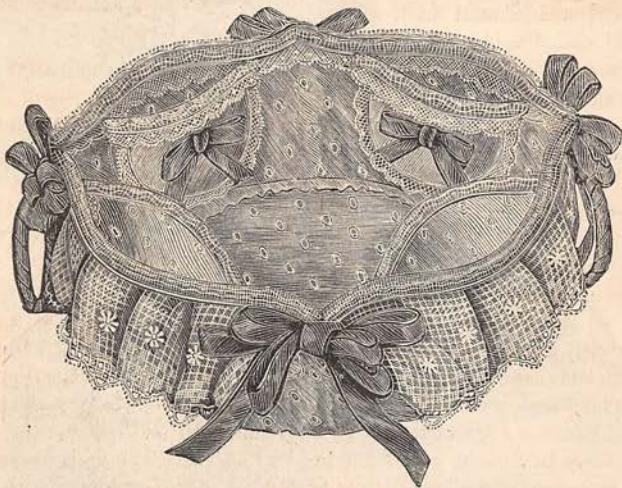


Fig. 12. Toilet-Basket.

pockets are cut of card-board, rounded at the bottom, and covered in the same manner as the basket, to which they are sewed with very fine stitches. A deep fall of lace decorates the basket all around, caught up at four places by bows of ribbon of a color to match the lining. The pockets and top of the basket are edged with narrow lace. A bow of ribbon decorates each pocket.

### WORK-BASKET.

Use silver perforated card-board; two shades of green and purple chenille; a piece of satin eight and four-fifths inches long, and six and one-fifth inches

wide; satin ribbon, four-fifths of an inch wide; thick silk cord; sewing silk; one purple China button, strong card-board, etc. The frame of this basket is



Fig. 13.

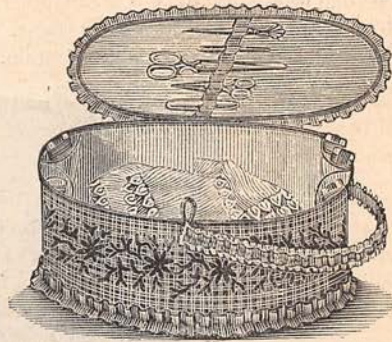


Fig. 14.

constructed of strong card-board. For the cover and bottom, cut two ovals, each seven and three-fifths inches long, and five and one-fifth inches wide. The side is three and one-fifth inches high, and long enough to reach around the bottom. The outer decoration of the basket consists of a strip of silver perforated card-board, embroidered with a border eight stitches wide, consisting of green leaves, purple flowers, and brown stems, worked in long stitches. When the inner side of the cover has been provided with a strip of satin, divided into five parts for thimble, scissors, needle-case, etc., bind all the parts with purple ribbon, and connect side and bottom by means of overhand stitches. The cover is decorated on the top with satin, lined with perfumed batting, and quilted in diamonds with white silk. At one of the long sides the cover is joined to the basket with overhand stitches, making the seam about two inches long. The cover is edged with a ruching and decorated with two bows; a ruching also surrounds the lower edge of the basket. A small purple China button and loop of elastic, serve as a means of closing the basket. The handle is made of thick silk cord, or a strip of scalloped silver perforated board, decorated with ruching, and may be affixed length-wise or cross-wise.

#### WORK-BASKET WITH STAND.

The model consists of a stand of brown cane, twenty-eight and one-half inches high. To the upper basket, a cover provided with a catch is attached by means of hinges. The latter, as well as the two baskets, the bottoms of which are slightly wadded, receive a lining of lilac silk. To the upper side of the cover a flat pincushion made of silk and batting, and five inches square in size, is affixed. It is edged with a ruching of pinked silk, one and two-fifths inches



wide. The inner decoration of the cover consists of a piece of silk, shirred on a round piece of card-board, four inches in diameter, and is edged with a similar ruching, as are also the outer and inner margin of the cover, the outer edges of the two baskets, and the two bottoms. Four bows placed as indicated in the illustration, finish the pretty decoration.



Fig. 15. Work-Basket with Stand.

#### STANDING SCRAP-BAG.

This "modern improvement," designed to hold the many bits of paper and scraps of waste material which otherwise would litter a sitting-room, may be made quite ornamental at little expense. To make the standard, get six pieces



Fig. 16. Standing Scrap-Bag.

with strong twilled muslin. This bag opens with a drawing-string, and, as the inside of the top shows, face with green or black silk — delicate colors would soil too soon. Sew box-plaited ribbon all around the bag where it is fastened to the standard. A triangle, or hoop of ratan or wire, inserted here, under the silk, will give it firmness. Then sew crimson and white chenille cord, with a crimson silk tassel at the ends, to the bag, and tie where the standard is notched. Fringe, or a ruche of silk, fringed out, may be used instead of ribbon.

#### STANDING WORK-BASKET.

Obtain three circular pieces of wood fourteen inches in diameter, for the top

of rattan, fourteen inches long, a one inch and a half wide ribbon-spool, and six pieces of rattan five inches long. Fasten two pieces of rattan of the same size together with tacks, until all are in pairs. Now, notch these fourteen-inch rattan sticks all around, at a distance of four and a half inches from the top, so as to provide a resting place for the cord which fastens the bag to the standard. Bore three holes near the center of the ribbon-spool, in which glue the double rattan sticks. The holes in which the short sticks which form the feet are to be inserted must be farther from the center. Color with black varnish. Fasten black fringe, or of the same color as the bag, on the round piece of wood, with very small tacks, such as are used by painters to tack oil canvas on wooden stretchers. The tacks will be hidden by sewing on cord or chenille, same shade as fringe, to the heading of fringe. The bag is made of one or three straight pieces of crimson silk, cashmere, or any woolen material which falls in graceful folds. To be serviceable, it should be lined



and bottom, and a center one seven inches. Fasten these together with a pole through the center, like the hour-glass stands, the small circle midway between the top and bottom. Screw three of the common iron clothes-hoops on the bottom, as feet.

Take a piece of ticking stripped sufficiently long to reach between the lower



Fig. 17.

A basket of any desired kind is made for the top, to which it is securely fastened by screwing from within on the bottom.

two circles, and long enough to fit round the bottom one. Embroider the white stripes with bright-colored zephyr in chain or "side-stitch;" hem the edges, from top to bottom, and gather the top to fit around the center circle. Cover or paint the top of the lower circle; thus is formed a receptacle for various articles required by the seamstress. Cover the small circle in the same manner, and around it make a case or basket for buttons, spools, etc.; trim with chenille zephyr-cord. Cover the rod, through the center, with scarlet chintz, and twine a black or yellow cord around it spirally. The top is finished by covering or painting; and furnishing with a set of six pockets of the ticking, fastened around the edge and hanging down to within an inch or two of the bottom.