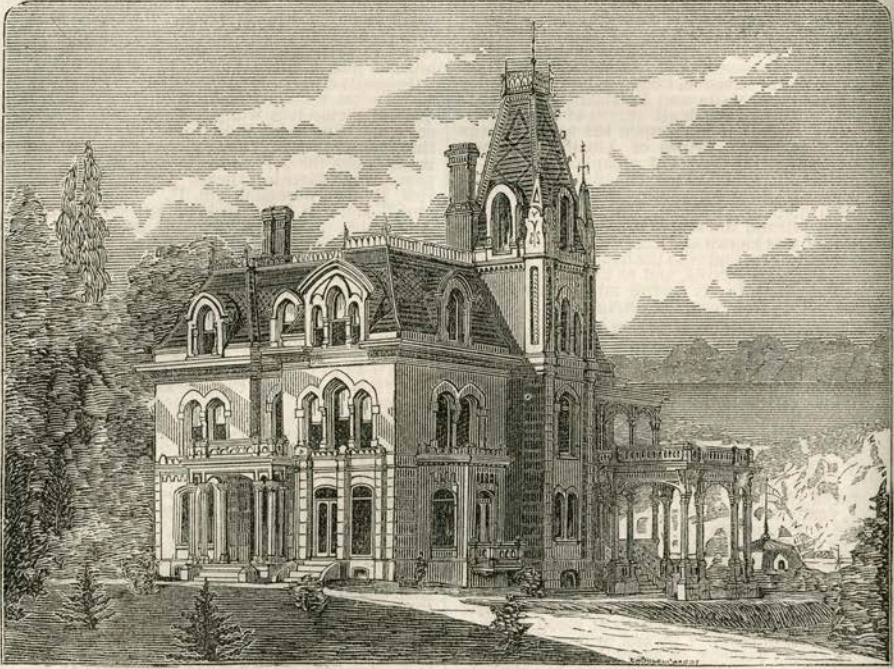
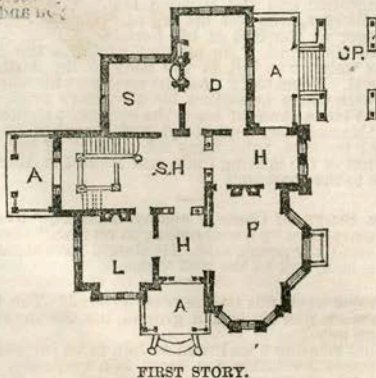


SUBURBAN RESIDENCE.

Drawn expressly for Godey's Lady's Book, by ISAAC H. HOBBS & SON, Architects, 809 and 811 Chestnut Street, formerly of 436 Walnut Street, Philadelphia.



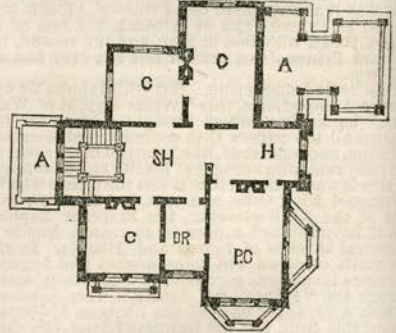
THE above is a design of a Gothic villa, Americanized. It contains all the requisites of a first-class American home. As a suburban residence, or country mansion, it has a refined, dignified, and substantial appearance, the plan having all the nobleness of effect required. The parlor is commodious and elegant, of the finest decorations, and lighted as it is by windows, the light will be thrown upon the walls, that paintings and stairways may have the full effect. By the use of sliding doors the main hall becomes a part of the parlor. It is intended to have a dumb waiter in the rear, so as to render the kitchen apartments perfect, as they are in the rear of the house. The slope of the ground at the back of the building affords fine ventilation and light. To those desiring to build, we would state that we have a book of our own designs that will aid materially in their selection, which we will send to their address on receipt of \$3.



FIRST STORY.

First Story.—A porch; P parlor, 19 by 29 feet; L library, 15 by 17 feet; H hall, 10 feet wide; SH stair

hall; D dining-room, 15 by 24 feet 6 inches; S sitting room, 15 by 15 feet; CP carriage porch.



SECOND STORY.

Second Story.—DR dressing-room, 10 by 13 feet; PC principal chamber, 16 by 25 feet; C chamber, 15 by 15 feet; H hall; A conservatory; C chamber, 15 by 24 feet 6 inches; C chamber, 15 by 15 feet.

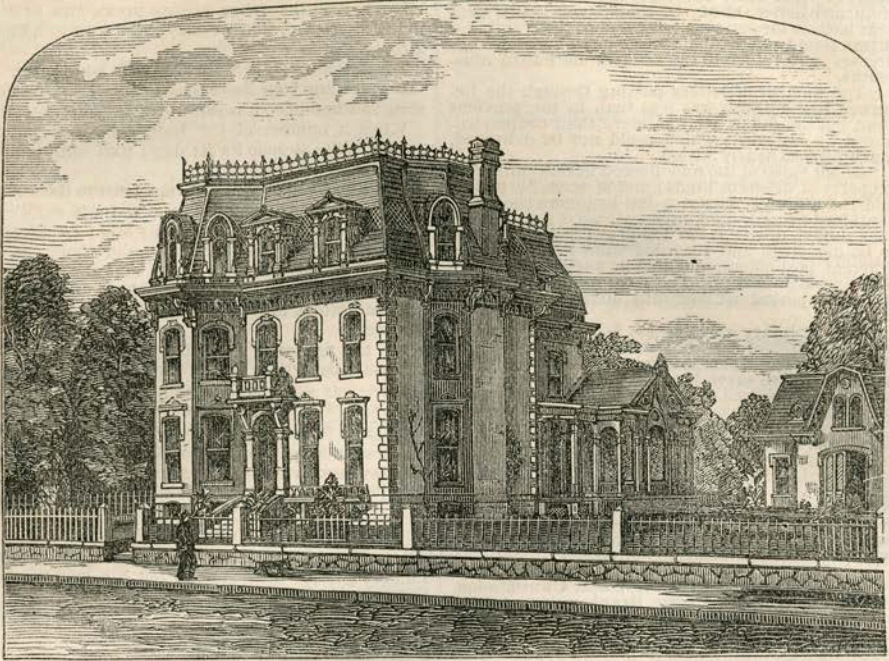
THERE was a young lady of Tenby,
Who wrote to her *confidante*, "N.B.
I don't want to wed,
No such thoughts in my head,
But—where can the eyes of the men be?"

WEDDING cards are now issued with the notice, "No plated ware," printed in one corner. Would it not be as well to add, "No presents from the Dollar stores put up in Caldwell's or Bailey's boxes?"

CANNIBALISTIC.—"Girls for cooking wanted." We presume some one wants cooks.

MODEL RESIDENCE.

Drawn expressly for Godey's Lady's Book, by ISAAC H. HOBBS & SON, Architects, 809 and 811 Chestnut Street, formerly of 436 Walnut Street, Philadelphia.

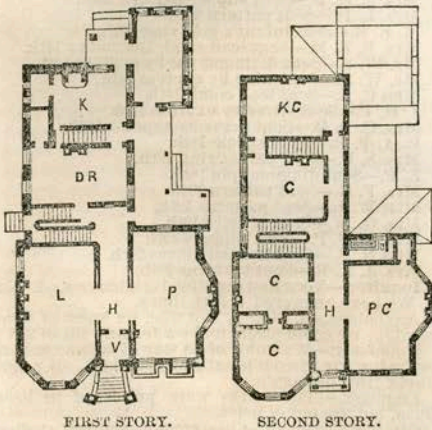


The above design was drawn for and built by Mrs. Eshleman. It is situated on Duke Street, Lancaster, and has given entire satisfaction. It is the most handsome house in the city, and has a carriage-house in the rear which is in good character with the dwelling. The house and stable cost about \$18,000, with finely laid-out grounds. The house is painted in imitation of the Berea stone of Ohio, with no change of color between the cornices and the walls, which in almost all cases is done in a vulgar manner, and de-

the house are 12 feet first story, 11 feet second, and 12 feet third, or French roof.

First Story.—V vestibule 6 by 8 feet wide; H hall, 8 feet wide; P parlor, 29 by 19 feet; L library, 15 by 31 feet; DR dining-room, 14 by 21 feet; K Kitchen, 12 by 17 feet.

Second Story.—H hall, 8 feet; PC principal chamber, 19 by 23 feet; C chamber, 15 by 15 feet; C chamber, 12 by 15 feet; C chamber, 14 by 17 feet; C chamber, 12 by 21 feet 6 inches.



FIRST STORY.

SECOND STORY.

stroy the rays of light that good proportion always throws upon the surfaces if not marred by contrasting colors. No one is willing to put a brown stone cornice upon a white marble building, for the tastes of all would decide for a white marble cornice to a marble house. The garden in front is all grass and walks except flowers placed in vases. The stories of

“MODEL.”—The word *model* is composed of the initial letters of the choicest features of a true home, namely, *Method*, *Obedience*, *Diligence*, *Economy*, and *Love*. *Method* puts every duty in its right place, and assigns to the different members of the household their appropriate part, so that each one may work to profit and advantage. *Obedience*.—There must be government to secure order and efficiency. The obedience rendered should be willing, cheerful, and cordial, else the loyal element is wanting, and it becomes the service of a slave, and not of a child. *Diligence*.—“Not slothful in business.” There is just so much to be done in every household, or its interests suffer. *Economy*.—“Gather up the fragments, that nothing be lost.” By economizing time, you will have leisure for culture, and for labors of love. Economize your *means*. Distinguish carefully between your *wishes* and your *wants*. This will keep debt from your dwelling. *Love* binds the home circle together in bonds softer than silk, yet stronger than steel.

THE STRONGEST WOMAN IN EUROPE.—Madame Patti has made her *début* in Moscow with such acception that she was called before the curtain thirty times. The bouquet of camellias thrown by the Princess Dolgorouki was so large as to require two men to carry it across the stage, and the value of the flowers showered upon the famous cantatrice amounted to \$500. Here is a woman strong enough to throw a bouquet some distance that took two men to carry!

SUBURBAN RESIDENCE.

Drawn expressly for Godey's Lady's Book, by ISAAC H. HOBBS & SON, Architects, 809 and 811 Chestnut Street, formerly of 436 Walnut Street, Philadelphia.



THE above suburban residence was designed and built near Pittsburg for Mr. Albert Dilworth. It is very much admired, and is a comfortable residence. It stands upon low ground, and had we known it, we could have improved its effects. We should always have a clear knowledge of the situation that

tistic forms. Discord and harmony are as definable in lines as they are in music. The work will be five dollars a copy.

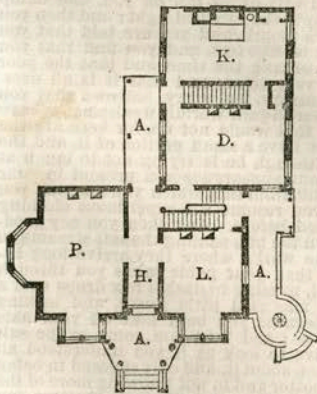
We have ready our book of designs which we will send to any point in the United States or Canada per mail upon the receipt of \$3. It contains

nearly a hundred different buildings.

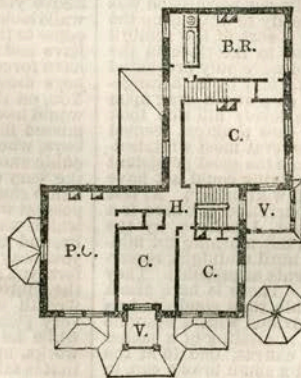
The above building is built of frame. It cost about ten thousand dollars, and is nicely finished, and considered a success. The lower story is twelve feet; the second is eleven, with comfortable servants' rooms above.

First Floor.—V vestibule, H hall, 6 feet; P parlor, 14 by 21 feet; L library, 14 by 14 feet; D dining-room, 14 by 21 feet; K kitchen, 10 feet 5 inches by 21 feet; A porch.

Second Floor.—PC principal chamber, 12 feet 9 inches by 21 feet; C chamber, 10 feet 3 inches by 23 feet; C chamber 11 feet two inches by 13 feet; H hall; C chamber, 17 feet 8 inches by 14 feet 2 inches; C chamber, 13 feet 5 inches by 11 feet 10 inches; BR bath-room.



FIRST STORY.



SECOND STORY.

the building is to occupy, that we may adjust its proportions and insure the beauty resident in the design. We are preparing for the press a grammar of art and architecture which we call the American Ovo law. It is a system of lines from harmony and contrast, quantity, and character. The work will be very valuable to all persons—the architect, artist, carpenter, and builder. Unerring laws governing these principles are as emphatical proven as are the laws governing music, sculpture, oratory, etc., and nothing will be taken for granted, but all positions will be proven by geometry and mathematics. It is a law of evolution, and as trees grow, so should ar-

A SMART GIRL, but her action not to be commended:—

“The sharpest so far this month is the Troy girl who makes her unsuspecting father the daily bearer of the sweet missives to a clerk in his office who has been forbidden to visit his employer’s house. She pins the letter in the old man’s cloak, and when he reaches the office and throws off the garment the clerk gets it and responds by the same carrier.”

A WOMAN is generally more economical than a man, because her “waist” is smaller.

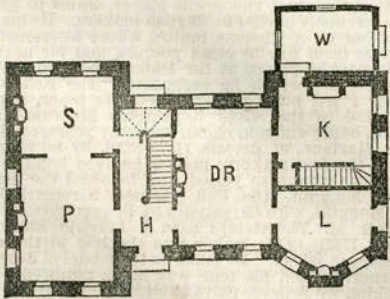
SWISS COTTAGE.

Drawn expressly for Godey's Lady's Book, by ISAAC H. HOBBS & SON, Architects, 809 and 811 Chestnut Street formerly of 436 Walnut Street, Philadelphia.

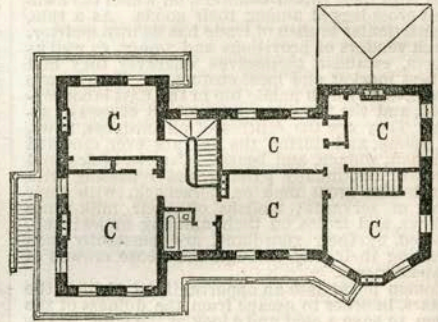


THE above is a design of a Swiss cottage organized to suit the American needs in some of our mountain glens and canons of California. In such a situation it will have a very picturesque effect. It is one of those kind of designs that are capable of being built of unplanned lumber, simply planed on the edges and

tastes of those who inhabit these localities. Porches, bays, etc., can be added to such a structure, and the whole being ornamental in its shapes, and the best architecture is possible. The above building will cost about \$3000 well built in most sections of the country. Full drawings, specifications, etc., will be



FIRST STORY.



SECOND STORY.

cut to definite shapes according to the design, and covered with shingles. It has a balcony half way around the whole building, which screens the first story from sun and rain and renders the rooms comfortable, and acts as a wind sail, inducing air through the rooms in the summer time. It is designed to be built of stone for first story and brick for the second, with stone dressings, and will cost about \$5000. It is necessary that full drawings should be secured with all the parts clearly specified, that no more material shall be secured than the amount required, as the transportation in some localities costs more than the material. Terra cotta chimneys can be substituted for brick, as their weight is less and cost less than bricks. A rough house built in this manner can have all the comforts, and in their situations be more beautiful than smooth finished structures, and suit the

made for \$75 for the above, or 2½ per cent. upon our estimate of the cost as stated.

Our blanks for specifications and bills of quantities will be sent on receipt of \$2.

Our book of designs for houses we send on receipt of \$3, which will facilitate persons to decide upon a design, should they wish to build.

First Story.—H hall, 8 feet; P parlor, 18 by 14 feet; S sitting-room, 11 by 14 feet; DR dining-room, 20 by 14 feet; L library, 11 by 14 feet; K kitchen, 11 by 14 feet; W woodshed, 9 by 14 feet.

Second Story.—C chamber, 16 feet 6 inches by 14 feet; C chamber, 11 by 14 feet; C chamber, 12 by 14 feet; C chamber, 8 by 14 feet; C chamber, 11 by 14 feet; C chamber, 10 feet 6 inches by 11 feet, with a bath-room 6 by 8 feet, and a large number of closets.

MODEL RESIDENCE.

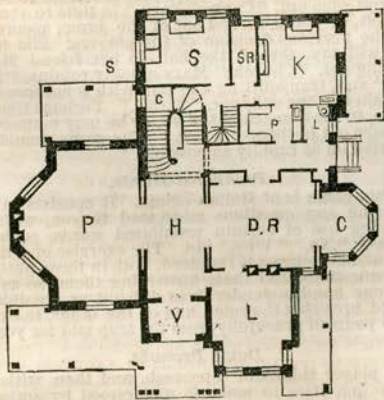
Drawn expressly for Godey's Lady's Book, by ISAAC H. HOBBS & SON, Architects, 809 and 811 Chestnut Street, formerly of 436 Walnut Street, Philadelphia.



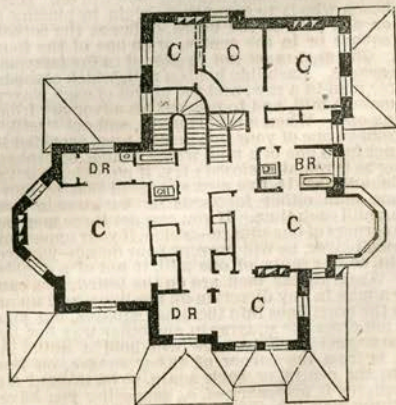
THE above design, in the American Gothic style, is now being built for William M. Lloyd, banker, at Altoona, Pa., a flourishing town on the line of the Central Railroad. The building is well situated, with a large plantation upon a sloping hill, the lawn in front of the house being nearly six hundred feet, and when finished it will be one of princely effect. It is being finished with black walnut in the finest style. The elevation is of pointed rubble masonry, of mountain free stone of a light color. The dressings

15 feet by 26 feet 6 inches; DR dining-room, 15 by 19 feet; C conservatory, 8 feet 6 inches by 10 feet 6 inches; P pantry, 6 feet by 10 feet 6 inches; L lavatory, 4 feet 6 inches by 6 feet 4 inches; K kitchen, 14 by 14 feet; SR store-room, 3 feet 9 inches by 10 feet two inches; S scullery, 15 feet by 11 feet 6 inches; H hall, 10 feet wide.

Second Story.—DR dressing-room, 7 feet 3 inches by 10 feet 4 inches; C chamber, 12 feet 4 inches by 14 feet 6 inches; C chamber, 15 feet by 20 feet 10



FIRST STORY.



SECOND STORY.

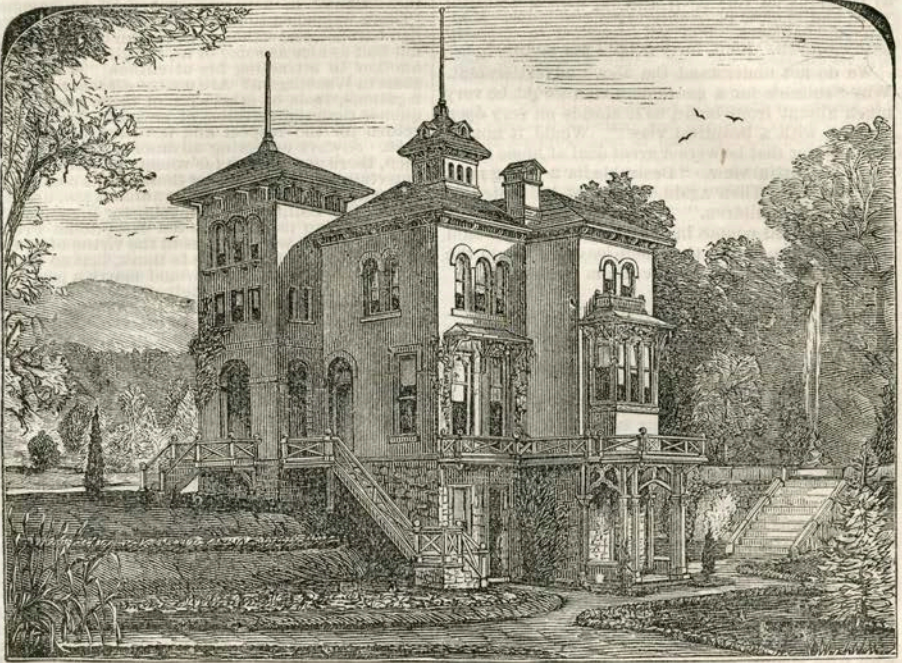
are of Berea stone from Ohio. Its cost will be between \$35,000 and \$40,000. We have many other buildings in Altoona, as well as many of the other towns along the line of this road.

First Story.—V vestibule, 5 feet 4 inches by 10 feet; L library, 12 feet by 14 feet 6 inches; P parlor,

15 feet 7 inches by 17 feet 8 inches; BR bath-room, 7 feet 4 inches by 10 feet; DR dressing-room, 5 feet 3 inches by 9 feet 7 inches; C chamber, 15 feet by 13 feet 3 inches; C chamber, 9 by 12 feet; C chamber, 8 feet by 11 feet 7 inches; C closets.

ITALIAN VILLA.

Drawn expressly for Godey's Lady's Book, by ISAAC H. HOBBS & SON, Architects, 809 and 811 Chestnut Street, formerly of 436 Walnut Street, Philadelphia.



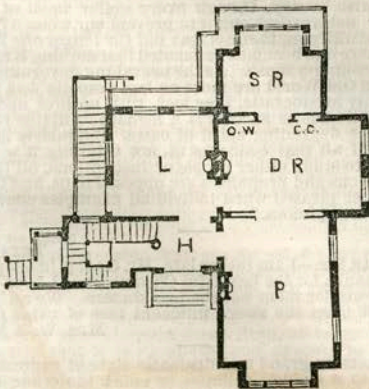
THE above villa, constructed of bricks, rubbed down and painted, will cost between \$4500 and \$5000, and if built of frame considerably less. The roof is of tin. The arrangement of the steps to the principal floor has a good effect. The basement should be rubble masonry, pointed. The design shows the garden front, the principal front not being seen. The arrangement of the terraces with flowering borders will be most beautiful and unique. The situation of the fountain, both front and rear, has a good effect. The terrace steps can be of wood. This de-

sign is most admirably adapted for a summer seat of much refinement. The placing of vases and statues in the front will be in beautiful harmony with the building. The front lawn should be kept broad and not chopped up by foliage and with very

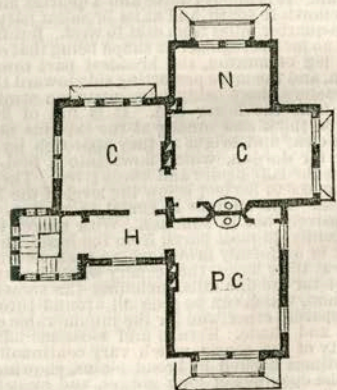
few plants in the ground. A line of Jardineres on each side of the principal walls with a few solitary evergreens, properly situated, would carry out the effect. We supply plans for landscape gardening, but charge extra for them. Parties desiring information, receive attention for a small fee, as many persons build without an architect, and are continually getting into difficulties for want of experience.

We send our book of designs, containing nearly 100 buildings, with their plans, upon the receipt of \$3.

First Story.—H hall; P parlor, 14 by 20 feet; I



FIRST STORY.



SECOND STORY.

sign is most admirably adapted for a summer seat of much refinement. The placing of vases and statues in the front will be in beautiful harmony with the building. The front lawn should be kept broad and not chopped up by foliage and with very

library, 15 by 15 feet; DR dining-room, 12 by 18 feet; SR sitting-room, 12 by 14 feet; DW dumb-waiter; CC china closet.

Second Story.—H hall; PC principal chamber, 14 by 20 feet; C chamber, 15 by 15 feet; C chamber, 12 by 18 feet; N nursery, 12 by 14 feet.

ORNAMENTAL COTTAGE.

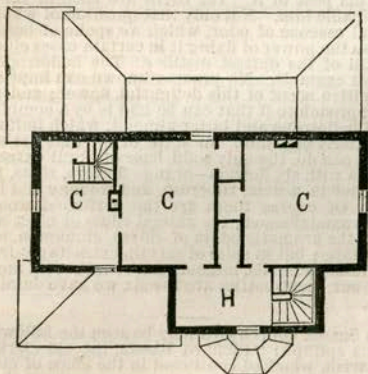
Drawn expressly for Godey's Lady's Book, by ISAAC H. HOBBS & SON, Architects, 809 and 811 Chestnut Street, formerly of 436 Walnut Street, Philadelphia.



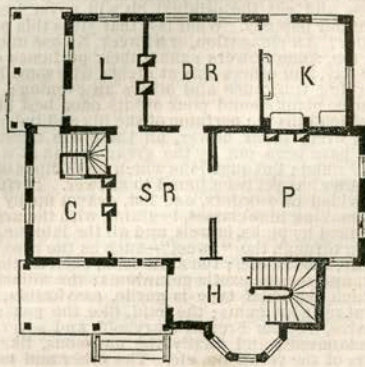
The above design is an organization between the French and cottage style of treatment. It is convenient and commodious for a small family, and can be built for \$4000 in frame, and in brick for \$5000, the second story almost containing a full perpendicular one, a small angular slope near the ceiling caused by the roof, which makes a very fine internal effect. The roof is slate, with the top of tin. These designs are all original and well considered. We are making great improvements in internal finish in houses that renders them more beautiful and cheaper. We finish most of them without stucco cornices; plain

turn yellow in a darkened room with great rapidity, and you of necessity must use French zinc, which has not the solidity or durability as the best lead, and if pure, is very expensive, and so the imitation article is resorted to. The picture moulding is not expensive, being made in such a way that hooks can be placed in a groove which it contains, and all the pictures can be hung, without driving a single nail, with silvered wire or copper and brass made for the purpose. This mode of finish makes the ceilings look higher than they do with plaster cornices.

First Story.—H hall, 7 feet 6 inches wide; P par-



FIRST STORY.



SECOND STORY.

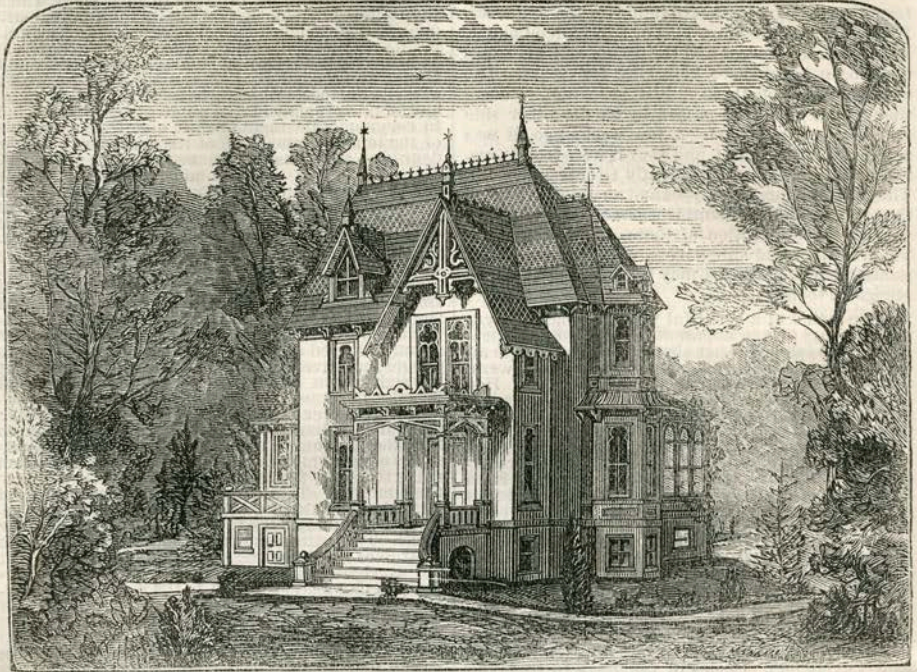
straight walls, which are painted one coat with oil and white lead and two coats of oil and turpentine; the third and fourth coat with acoustic varnish, tinted to any desirable color. This acoustic varnish costs \$2.50 per gallon, and two gallons will paint a parlor two coats 15 by 30 feet, walls and ceilings. It becomes very hard, and can be easily scrubbed. Any turpentine or other material will cause lead to

turn yellow in a darkened room with great rapidity, and you of necessity must use French zinc, which has not the solidity or durability as the best lead, and if pure, is very expensive, and so the imitation article is resorted to. The picture moulding is not expensive, being made in such a way that hooks can be placed in a groove which it contains, and all the pictures can be hung, without driving a single nail, with silvered wire or copper and brass made for the purpose. This mode of finish makes the ceilings look higher than they do with plaster cornices.

Second Story.—H hall; C chamber, 14 feet 6 inches by 15 feet 6 inches; C chamber, 11 feet 6 inches by 15 feet; C chamber, 10 by 15 feet, with a large number of closets.

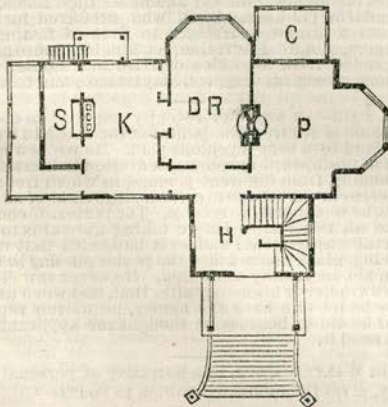
SUBURBAN RESIDENCE.

Drawn expressly for Godey's Lady's Book, by ISAAC H. HOBBS & SON, Architects, 809 and 811 Chestnut Street formerly of 436 Walnut Street, Philadelphia.

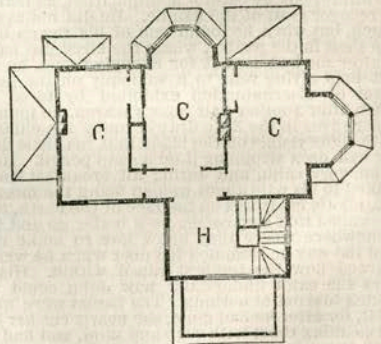


The above is a cheap French suburban residence. The interior is well arranged for comfort and convenience, and can be well built in the vicinity of Philadelphia for \$4000. We will supply full drawings and specifications drawn out to fully explain the whole so that any intelligent builder in the country can build it without difficulty, giving all the detail parts their full size. Our price is uniformly 2 1/2 per cent. upon our published estimate; for this design the charge would be \$100. Everywhere in the United

pay; and as we also make a portion of our business landscape gardening, when grounds are to be placed in artistic association, we must have the grades marked distinctly and a map sent to us showing the plantation, which can always be executed by a surveyor. This saves money, in grading and forming the same into fine effect, as many persons have fine plantations requiring but little to render them truly picturesque with very little outlay, yet for the want of the practical knowledge only obtained by experi-



FIRST STORY.



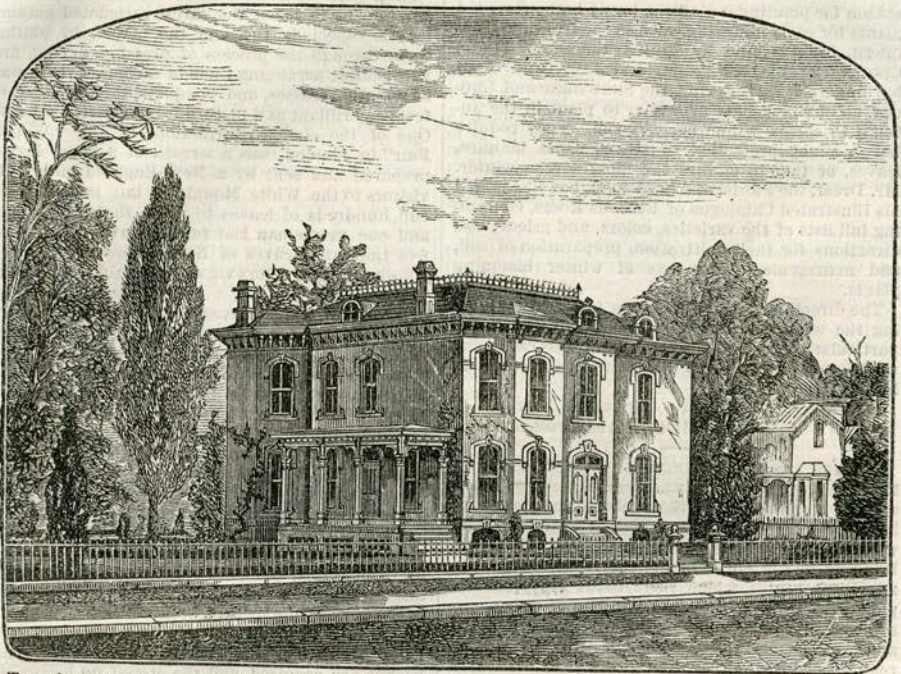
SECOND STORY.

States and Canada residents are availing themselves of our services. Any person ordering drawings for a house should always fully describe the location, and size of the lot, the distance back from the road, width of its front, and the kind of building that will be in association with it, also the grade of the grounds. We know this is troublesome, but it will be found to

ence and culture, they fail to obtain the same, and often destroy what would have been their greatest beauty. Our charges for the same will be found reasonable, and estimates are always freely given when required. For large parks we always have practical gardeners at our command, who personally superintend the work of the same, that we can recommend.
First Story.—H hall, 8 feet wide; P parlor, 12 by 16 feet; DR dining-room, 12 by 18 feet; K kitchen, 12 by 16 feet; S shed, 8 by 12 feet; C conservatory.
Second Story.—C chamber, 12 by 16 feet; C chamber, 12 by 18 feet; C chamber, 10 by 16 feet; H hall.

SUBURBAN RESIDENCE.

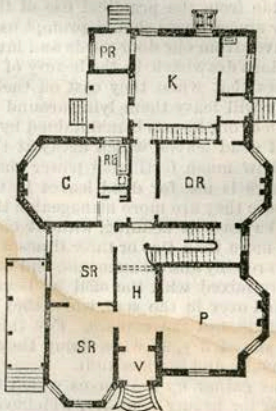
Drawn expressly for Godey's Lady's Book, by ISAAC H. HOBBS & SON, Architects, 809 and 811 Chestnut Street, formerly of 436 Walnut Street, Philadelphia.



THE above suburban residence was drawn for B. C. Taylor, Esq., of the B. C. Taylor Manufacturing Co., Dayton, Ohio, and is being built on one of the five wide avenues of that beautiful and healthy city. It will be constructed of brick, with Berea stone trimmings, and contains all the modern improvements, viz., Hobbs's new and beautiful style of finish, a vast improvement over the old-fashioned Archi-

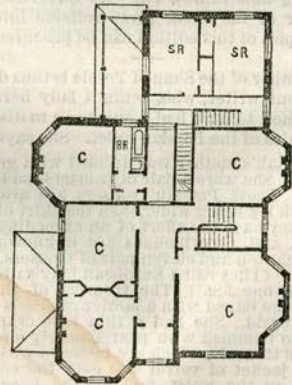
will not exceed \$20,000, elegantly finished, with butternut wood rubbed down in oil. Persons desiring information and our opinion upon works they have in process, designed by other architects, must inclose a fee of \$5 to insure attention.

First Story.—V vestibule, 6 feet by 7 feet 6 inches; H hall, 7 feet 6 inches wide; P parlor, 15 by 20 feet; SR sitting-rooms, 14 feet by 14 feet 6 inches; DR dining-room, 14 feet 6 inches by 16 feet 3 inches; BR bath-room, 5 feet 6 inches by 8 feet 6 inches; C chamber, 10 feet 6 inches by 14 feet 6 inches; K kitchen, 15 feet 8 inches by 17 feet; PR pump-room, 7 by 7 feet; a pantry 5 feet 6 inches by 11 feet 6 inches; and a large number of closets.



FIRST STORY.

trave, which was also invented by Mr. Hobbs. This new style of moulding entirely reverses the old method; the heavy side is next the door, and the washboard mouldings are located around them. Also Hobbs's double pivot blinds, which do away with the clumsy stick down their centre, by the substitution of a silver plated strip alongside of the stiles. They are adjustable up and down, and close, perfectly tight, when well nailed, and are not moved by the wind. Care and new invention is brought to bear in every part of this structure. Its whole cost

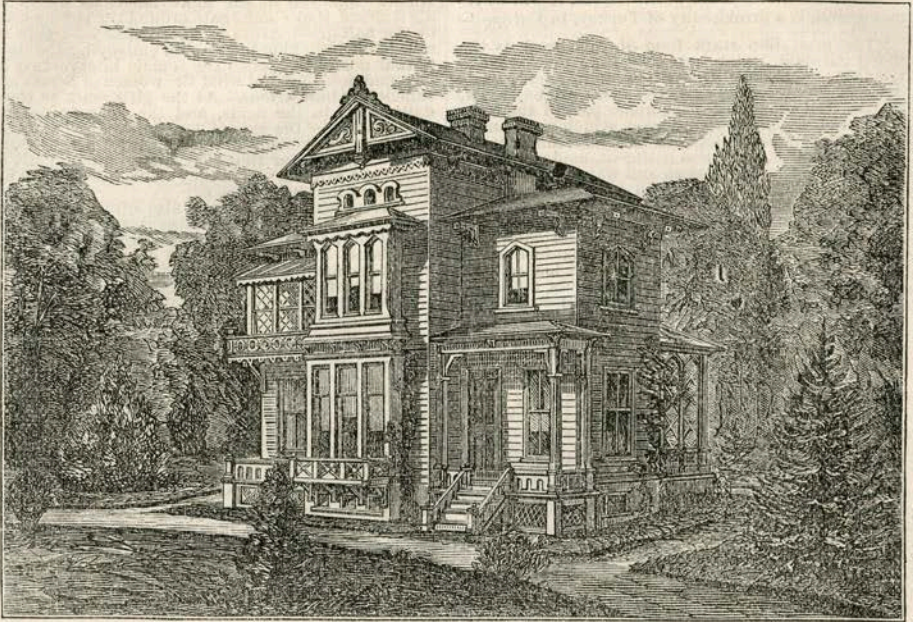


SECOND STORY.

Second Story.—C chamber, 15 by 20 feet; C chamber, 13 feet 6 inches by 14 feet; C chamber, 13 feet 9 inches by 14 feet; C chamber, 14 feet by 14 feet 6 inches; BR bath-room, 5 feet 6 inches by 8 feet 6 inches; C chamber, 10 feet 6 inches by 14 feet 6 inches; SR bed-rooms, 10 by 14 feet; and a dressing-room, 7 feet 6 inches by 7 feet 6 inches.

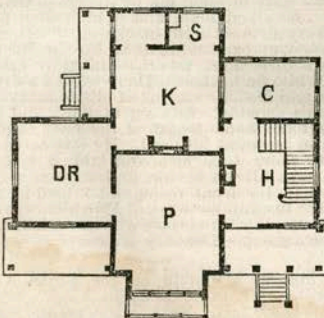
PICTURESQUE ITALIAN VILLA.

Drawn expressly for Godey's Lady's Book, by ISAAC H. HOBBS & SON, Architects, 809 and 811 Chestnut Street, formerly of 436 Walnut Street, Philadelphia.

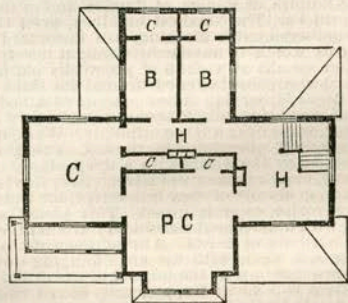


THE above design is intended as a country house. Its detail parts are simple and direct. It is not the kind of house to build in prime uniform lines, as is common in villages. It will harmonize well with natural scenery, and can be constructed of frame, weather-boarded, at a cost of about \$4000. It has four fine porches, but no mouldings must be used in the design. The roof is covered with iron or tin. As we are continually receiving letters from persons who have attempted to build without an architect, and often those who have no experience get into difficulties, sometimes placing the house too high at others too low; we will state to those persons that we are willing at all times to give them the advantage of our experience for a small fee, and it is rarely ever impossible to remedy the evil to a great extent. Many hundreds of houses are spoiled by the painter

First Story.—H hall; P parlor, 12 by 14 feet 6 inches; DR dining-room, 11 by 12 feet; K kitchen, 12 by 12 feet; S sink-room, 4 by 6 feet; C conservatory, 7 by 12 feet; and a store-room, 4 by 6 feet.



FIRST STORY.



SECOND STORY.

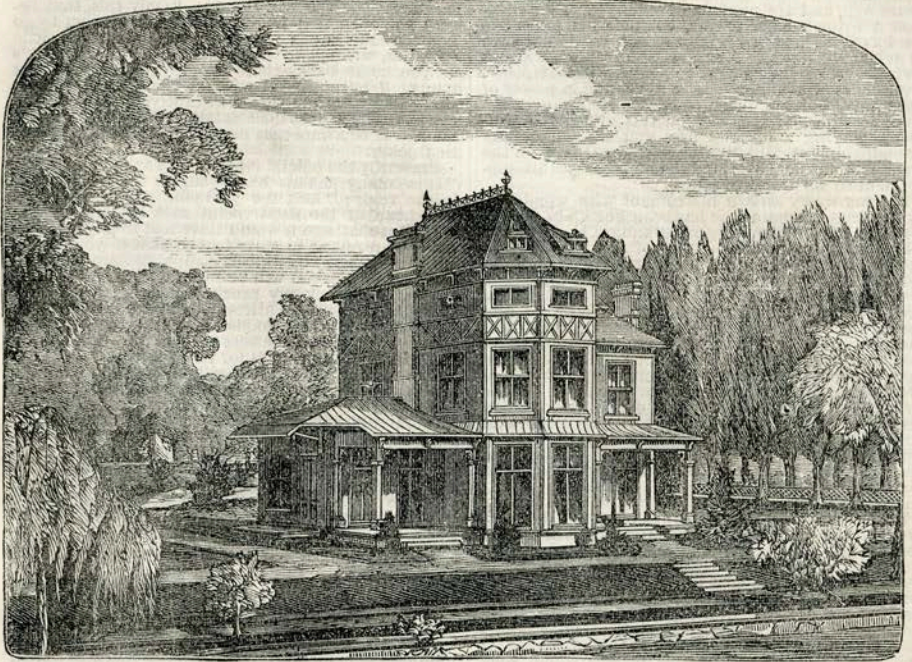
Second Story.—H hall; PC principal chamber, 12 by 14 feet; C chamber, 11 by 12 feet; B bed-room, 6 by 9 feet; B bed-room, 6 by 9 feet; C closets.

alone, and we always advise to paint a house of one simple tone of color, avoiding the color of dust and dirt of the vicinity, but if of the same tone, must be brighter and have a cleaner appearance. We offer our rights of Hobbs's patent double pivot blind for sale in all the Eastern, Middle, and Southern States. It works without the middle rod. Orders will be received to execute all kinds of drawings, landscape gardening, church illuminations, etc.

FREEDOM OF THE PRESS.—In St. Petersburg, recently, the editor of a daily newspaper, being much impressed with the prevalence of drunkenness, determined to instruct the public mind on the subject, and, with this view, took an excursion into the country to collect facts on the subject. There he found two typical villages, one, where there was no tavern, all order and thrift, the other, where the tavern was a conspicuous object, all poverty, misery, disease, and dirt. On this he wrote a powerful article, making an appeal to right-minded persons to do what they could to mitigate this evil, but he unfortunately brought it to a close by asking, "Where are the clergy, and why do they not preach against drunkenness?" The police authorities, being unable to answer this home question, gave it up, and settled the difficulty summarily by suppressing the edition of the paper in which the article was to appear.

SUBURBAN RESIDENCE.

Drawn expressly for Godey's Lady's Book, by ISAAC H. HOBBS & SON, Architects, 809 and 811 Chestnut Street, formerly of 436 Walnut Street, Philadelphia.

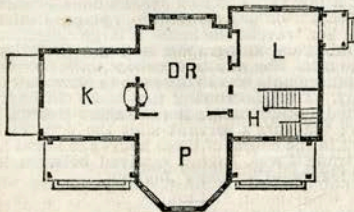


THE above design is a cheap suburban residence of simple character. The kitchen wing is one story high. The house has four rooms on first floor, three on second, and three on third; the stories eleven feet, ten feet, and nine feet respectively; built in good style. It will cost of frame, weatherboarded, \$3000; and of bricks, painted, \$3500. Persons approving of this style of architecture, cannot fail to like this sample, as its proportions are carefully adjusted. We have for sale "Hobbs' Architectural Designs," price \$3; also Hobbs' double pivot blinds, that are being largely manufactured in this city and elsewhere. Patent rights for sale for all States except the Northwestern States.

Schedule of charges for Architectural Designs, specifications, etc.:

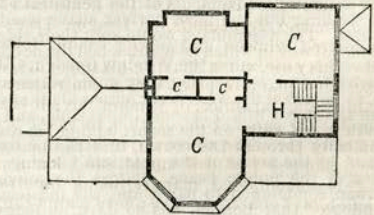
For drawing elevation of four sides and plans of stories,	1 1/2 per cent.
For full size details throughout,	1 per cent.
" " specifications and bills of quantities,	1/2 per cent.

Making a total of 3 per cent.
 For full superintendence, 2 per cent.
 Charge of the expenses of travel over twenty-five miles are added to the above.



FIRST STORY.

First Story.—H hall, 8 feet wide; P parlor, 12 by 16 feet; DR dining-room, 15 by 16 feet; L library, 15 by 15 feet; K kitchen, 15 by 16 feet.



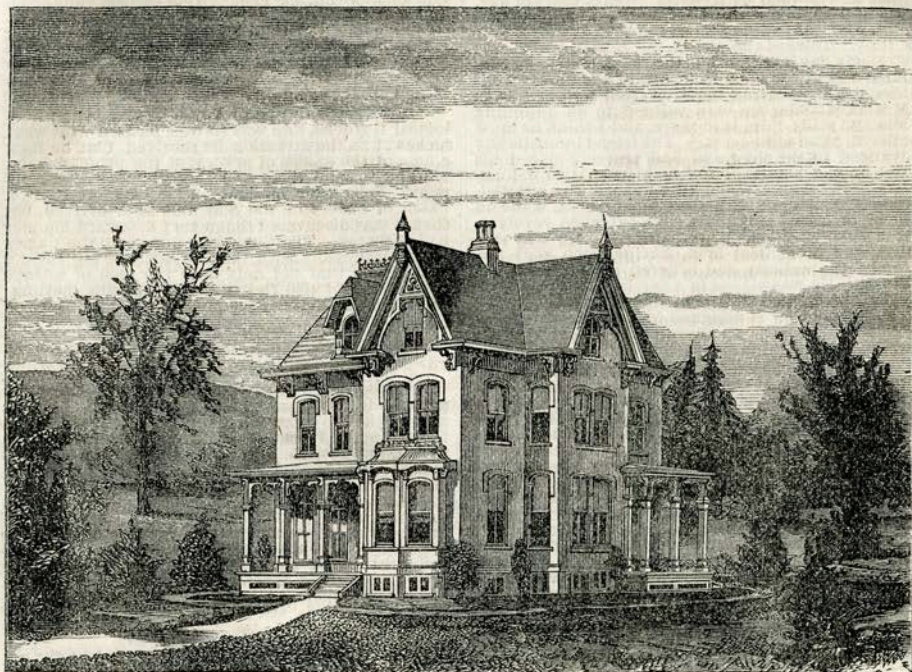
SECOND STORY.

Second Story.—C chamber, 12 by 16 feet; C chamber 15 by 15 feet; C chamber, 10 by 16 feet; H hall, and a number of closets.

M. LOUIS LAGARE, of the *Courrier Municipal*, Paris, has just published an essay, showing how persons who sold tainted meat used to be punished. He writes that in June, 1351, Jaques Tournebru, nicknamed the Shearer, seized some suspected meat on the stall of Pierre Bardel. A report was instantly drawn up and transmitted to the syndic of the butchers, Michel Saint-Yon. An inquiry was ordered, and it was found that the accused was an old offender. A second report was addressed to the Provost of Paris, comparing the culprit to a poisoner, and demanding, in the name of a corporation outraged by the infamy of one of its members, the degradation and then the death of Pierre Bardel. The first magistrate of the police approved the conclusions of the report, and the delinquent was condemned to pass through three hours in the pillory, and then to perish by the hands of the public executioner. On the day of the execution, one hundred and twenty-seven butchers of the city of Paris repaired to the market and drew themselves up around the pillory. At the end of three hours, the tipstaff announced to the people that the prisoner was about to be executed. All the butchers, with hats on, bowed their heads, and justice was done.

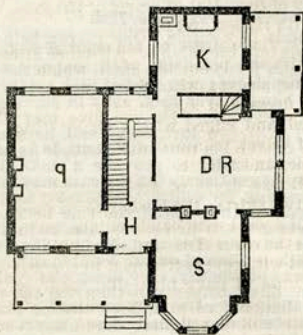
SUBURBAN RESIDENCE.

Drawn expressly for Godey's Lady's Book, by ISAAC H. HOBBS & SON, Architects, 809 and 811 Chestnut Street, formerly of 436 Walnut Street, Philadelphia.



The above design was drawn for a gentleman in Lancaster, Pa., and has four rooms on the first floor, four chambers on the second, and four on the third floor. The building can be readily placed on a fifty feet front lot. The proportions are good and conveniently arranged. The house can be constructed of bricks for \$7000 and of frame for \$5000. It will be found to contain elegance and convenience adaptable to any situation.

We will send full drawing and specifications to fully construct in frame for \$125, and in bricks for \$150, suiting it to the wants of the owner and adapting it to the location. Hobbs's Architectural De-

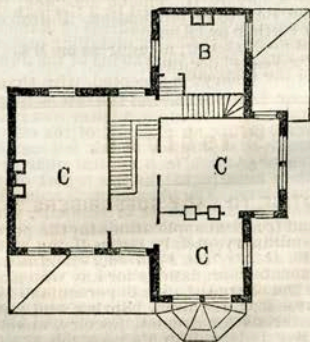


FIRST STORY.

signs, a book of Suburban and Rural Residences will be sent by mail to any address upon the receipt of \$3.

First Story.—H hall, 6 feet wide; P parlor, 13 by 21 feet 6 inches; SR sitting-room, 12 by 12 feet 6 inches, with a bay-window 4 feet 6 inches by 9 feet; DR dining-room, 13 by 17 feet; K kitchen, 11 by 12 feet.

Second Story.—C chamber, 13 by 21 feet 6 inches; C chamber, 12 by 12 feet; C chamber, 13 by 17 feet; B bed-room, 11 by 12 feet.



SECOND STORY.

ANSWERS TO CORRESPONDENTS.

UNDER this head will be found all information connected with MSS., and answers from the Fashion Editress.

Upon all matters connected with the Fashions, address "Fashion Editress, care L. A. Godey, Philadelphia." Mrs. Hale is not the Fashion Editress.

In sending an order to the Fashion Editress, the cash must always accompany it, or it will not be attended to.

All persons requesting answers by mail must send a post-office stamp; and for all articles that are to be sent by mail, stamps must be sent to pay return postage.

Be particular, when writing, to mention the town, county, and State you reside in. Nothing can be made out of post-marks.

Any person making inquiries to be answered in any particular number must send their request at least two months previous to the date of publication of that number.