

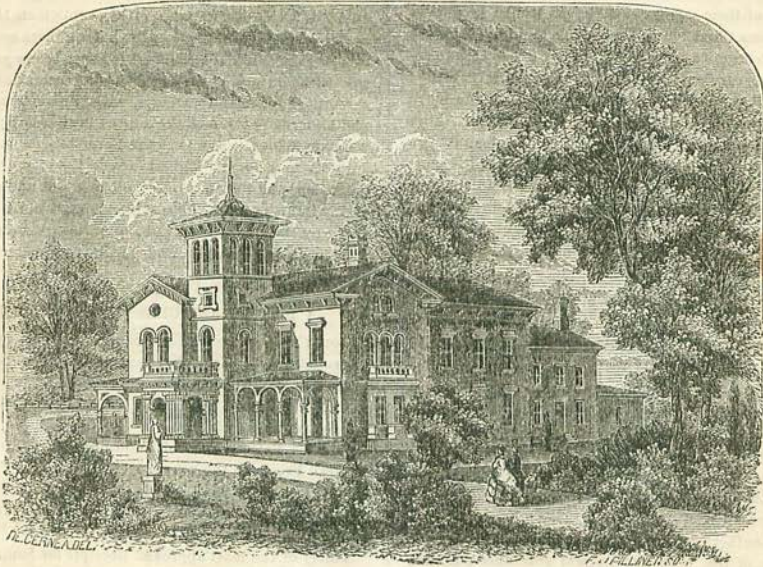
ITALIAN VILLA.

Designed expressly for Godey's Lady's Book by SAMUEL SLOAN, Architect, Philadelphia.

In the present number of our architectural series, we present a design of an Italian villa, with high tower, bracketed gables, bay windows, and broad projecting

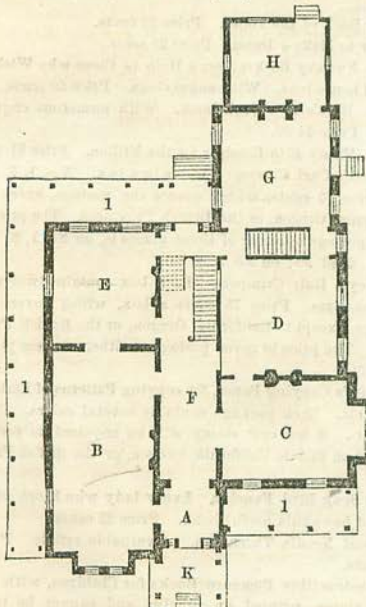
verandas, forming, altogether, a pleasing and agreeable combination of that style. The plans are arranged with due regard to convenience; the rooms are large, airy, and well ventilated.

Ground Plan.—B is large drawing-room, with folding doors opening to library, E; F wide hall, passing entirely through the building, with vestibule A, porch K,

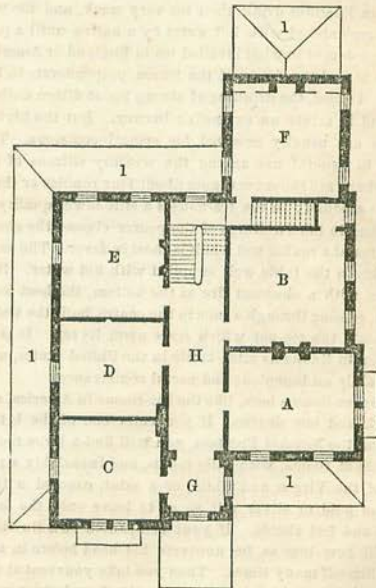


with steps to the drive in front; C sitting-room, with bay window looking out upon the lawn; D dining-room, with passage to kitchen, G, with private stairs

The *second story* contains six chambers, with closets, bath-room, dressing-room, etc. H hall, with direct communication to each chamber; G dressing-room, opening



between; H out kitchen. The drawing-room, sitting-room, and library opening with windows to the floor upon the broad verandas, I I I.



on to balcony over the porch; I I I roof of veranda. The attic is finished, making several comfortable bedrooms.

DESIGN FOR A COUNTRY RESIDENCE.

Designed expressly for *Godey's Lady's Book* by SAMUEL SLOAN, Architect, Philadelphia.

The plan may be thus described:—

The main building is 44 feet front by 36 feet deep, with

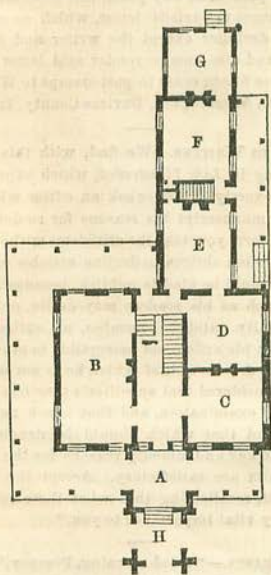
an open porch upon three sides, and a carriage drive upon the centre of the front. The hall is 9 feet wide, and contains the main stairway, with a door opening on to the back porch, and also a door opening direct into the dining-room; H is the entrance porch, front; B is the drawing-room, 16 by 33 feet, with all the windows



PERSPECTIVE VIEW.

opening to the floor; D is the sitting-room, 16 by 16 feet; C reception-room, also 16 by 16 feet; E dining-room, 16

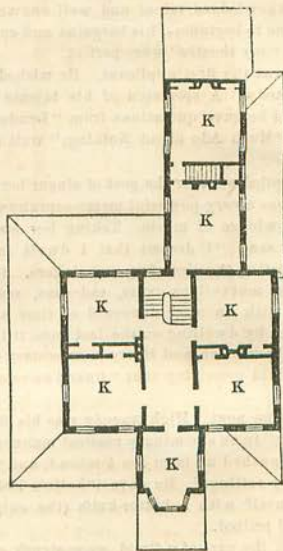
porch, and two in the back building. The attics are well lighted, and a sufficient pitch to the roof that will supply a number of good chambers.



FIRST FLOOR.

by 18 feet, with closets, etc.; F the kitchen, 16 by 18; G the out kitchen, 14 by 14 feet.

The second story main building will contain four chambers, with an additional one over the entrance

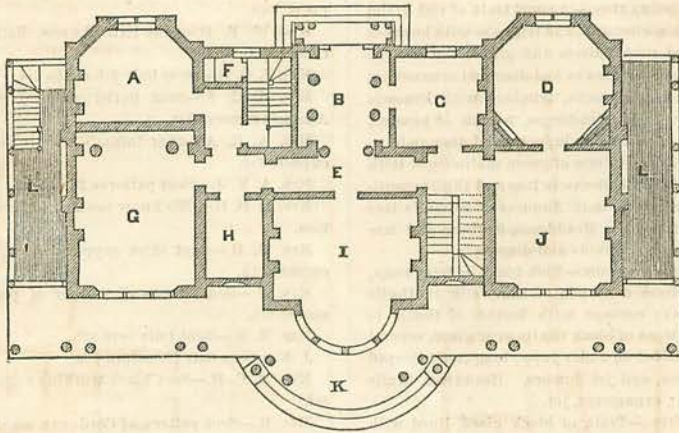
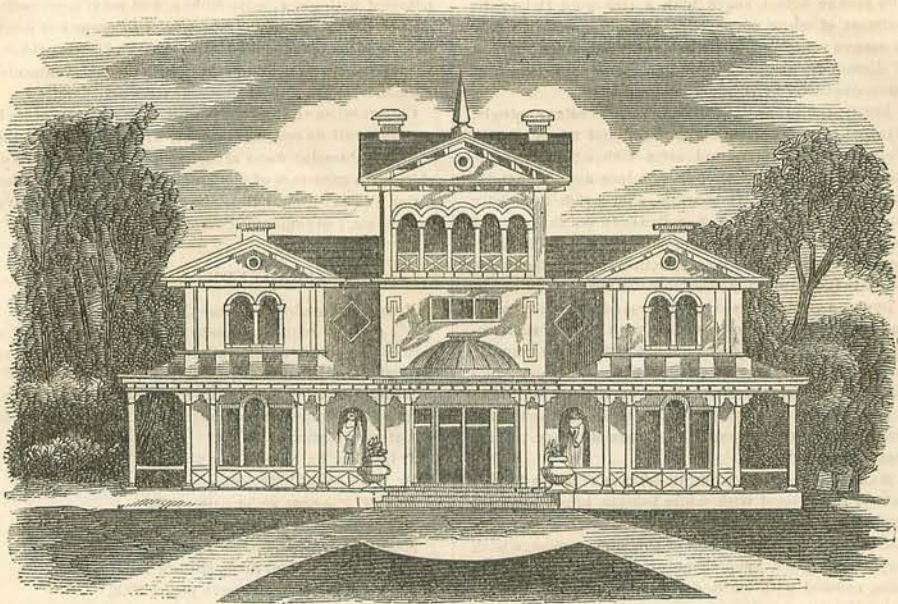


SECOND FLOOR.

The entire cost for erecting and completing a building after this design, if of stone in stubble work and pointed, will be \$8,000.

A VENETIAN SUMMER RESIDENCE.

Designed expressly for Godey's Lady's Book, by ISAAC H. HOBBS, Architect, Philadelphia.



GROUND PLAN.

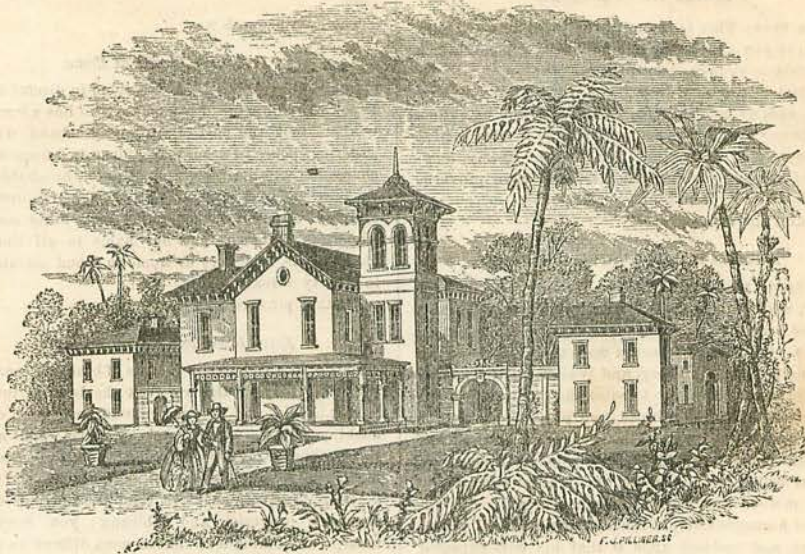
A Housekeeper's room; B Hall; C Ante-room; D Library; E Corridor; F Water-closet; G Dining-room; H China closet; I Saloon; J Drawing-room; K Awning; L Area.

ANCIENT EMBROIDERY.—Speaking of Peloponnesus, a province, or *theme*, of the Byzantine monarchy, Gibbon says that the embroidery there produced was raised either in silk or gold, and the more simple ornament of stripes or circles was surpassed by the nicer imitation of flowers. The vestments that were fashioned for the palace or the altar often glittered with precious stones, and the figures were delineated in strings of Oriental pearls. Until the twelfth century, Greece alone, of all the countries of Christendom, possessed the silk worm.

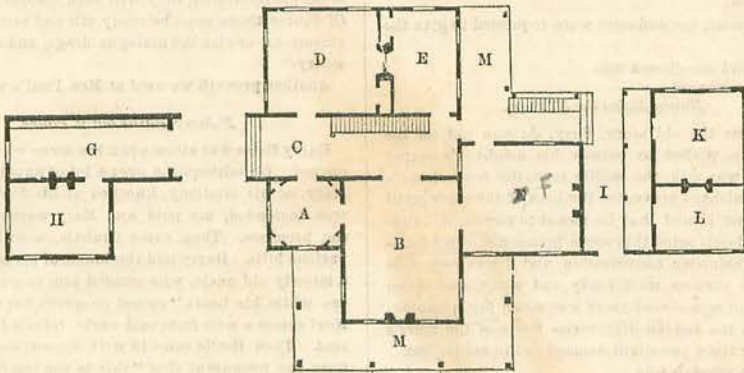
LA PIERRE HOUSE.—This most excellent hotel still continues to be the resort of all who like a quiet place, free from the noise and bustle of a large hotel. The Prince de Joinville lately stopped there; all distinguished visitors make it their stopping place. Families dislike to leave it when they get under its hospitable roof. It is decidedly more pleasantly situated than any other hotel in the city, and the Messrs. Ward resemble in appearance and character those two excellent characters of Dickens'—"the Brothers Cheeryble."

DESIGN FOR A SOUTHERN HOUSE IN THE ITALIAN STYLE.

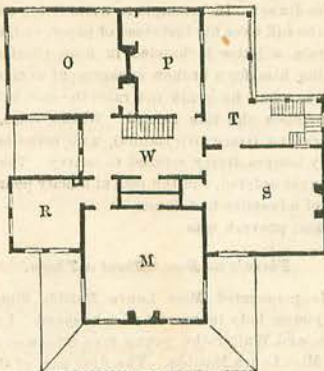
Designed expressly for Godey's Lady's Book by SAMUEL SLOAN, Architect, Philadelphia.



PERSPECTIVE VIEW.



GROUND PLAN.



SECOND STORY.

A DESIGN that may readily be constructed of wood, if desirable, and so arranged that it may readily be increased or diminished in its dimensions.

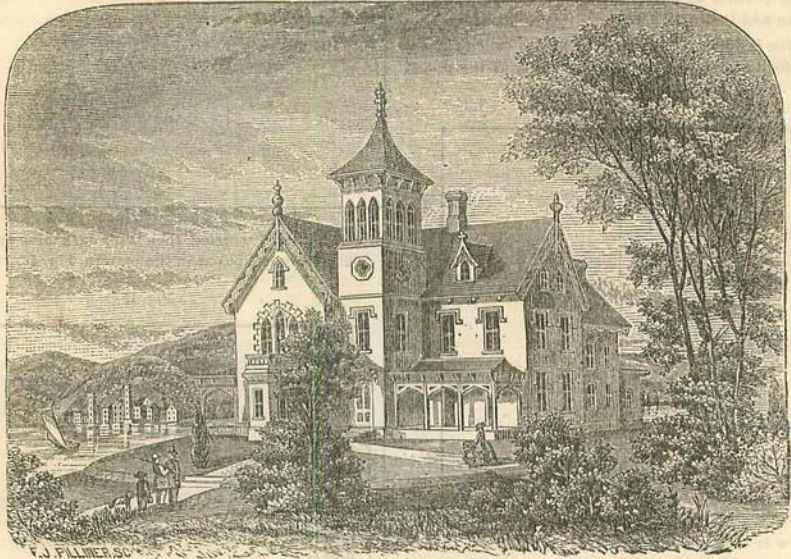
Ground Plan.—A represents the library, 14 feet square, with book-cases constructed in the four angles, thus presenting an octagon form; B is the drawing-room, 20 feet wide by 28 feet long; C the entrance hall, entered beneath the carriage drive; D is the reception-room, 18 feet square; E chamber, 14 by 18 feet; F dining-room, 20 feet square; G ten-pin alley; H billiard-room; I open passage; K the kitchen; L store-room; M M porches.

Second Story.—M O P R S are chambers of large size; T is a gallery, with private stairs; W the hall, containing the main stairway. All the chambers are provided with ample closets, and all necessary conveniences requisite to perfect a first-class dwelling.

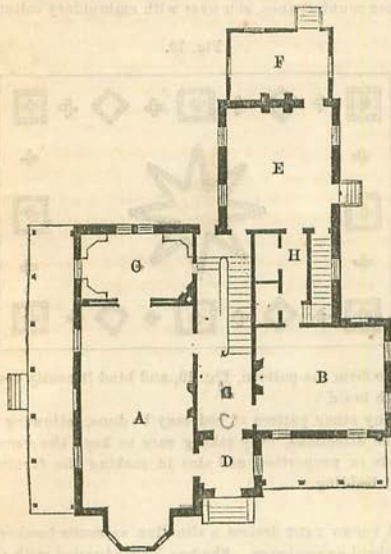
A TITLE is frequently nothing more than the cross stamped on a silver spoon.

COTTAGE IN THE GOTHIC STYLE.

Designed expressly for Godey's Lady's Book by SAMUEL SLOAN, Architect, Philadelphia.



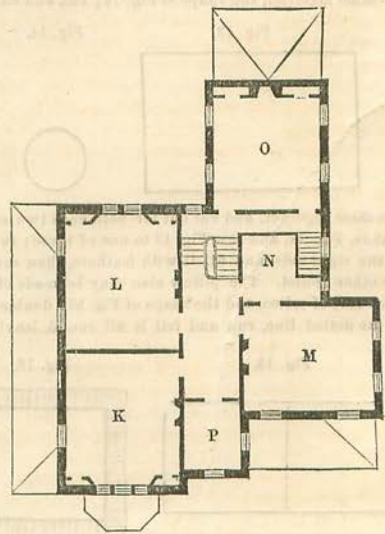
PERSPECTIVE VIEW.



FIRST FLOOR.

First story.—A is the drawing-room, 15 by 23 feet; B is the sitting-room, 15 by 16 feet; C the hall, 8 feet wide; D the vestibule, within the tower, 8 feet square; E the dining-room, 16 by 18 feet; F the kitchen, 14 by 12 feet; G the library, 9 by 15 feet, at the rear end of drawing-room, with book-cases framed in the four corners. The front and flank each has a porch, and a bay window projecting from the front.

The *second story* contains four large sized chambers, a



SECOND STORY.

bath-room, and dressing-room; and there are also four attic rooms above.

The cost of erecting this building in a substantial manner of stone, facing un rubble work, will be \$5,000.

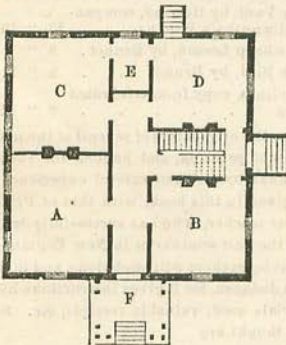
If you wish to refuse the request of an old friend or a poor relation, but can hardly screw your courage to the sticking-place, put on a pair of tight shoes, and you will find it perfectly easy.

COTTAGE IN THE BRACKETED STYLE.

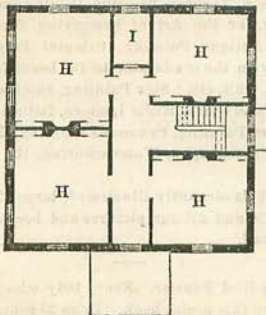
Designed expressly for Godey's Lady's Book by SAMUEL SLOAN, Architect, Philadelphia.



First story.—A is the parlor, 15 by 17 feet; B the sitting-room, 15 by 15 feet; C dining-room, 15 by 17 feet;



D kitchen, 12 by 15 feet; E the butler's pantry, 6 to 8 feet; F front porch.



The second story contains four chambers of moderate size and a dressing-room; the attic is of sufficient height to admit of two ordinary sized bed-rooms.

The building may be constructed of brick or of stone, at a cost of \$2,500.

A KIND AND COMPLIMENTARY LETTER:—

I trust to send many subscribers to you, as the publisher of the most valuable of all publications, in promoting the cause of female education, with all its attendant graces and beauties. A female is not educated when she leaves school; she must inform herself on all those matters that pertain to living comfortably and making home happy, and what other magazine assists more in that great work than yours? None! The moral excellence of the Book is getting to be proverbial with all who know anything about it. It supplies a want long felt, that no other publication reaches. Every lady in the land ought to take it, and I trust your list will go on increasing and swelling in size until your only complaint will be that you are unable to fill the orders; but even then your genius will surmount that obstacle, as you have done all others. I noticed a beautiful tribute from the *Charleston Mercury* (recently) to your work, all of which was well deserved.

Yours, most truly,

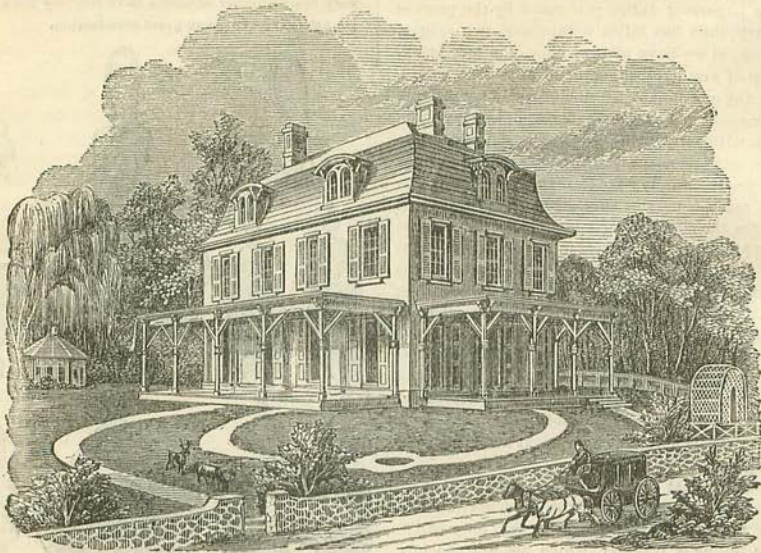
Jas. M. Brown, Proprietor of *Southerner*.

Darlington C. H., S. C.

TO OUR TEXAS SUBSCRIBERS.—The losses by mail from Texas exceed those of any other three States. We would recommend subscribers to procure drafts, if possible; but if they send notes, cut them in two, and send one half. When they receive the Book, it will be evidence that the first halves of the notes have been received; they can then mail the remaining portions of the notes. We would recommend the same to others who have had losses.

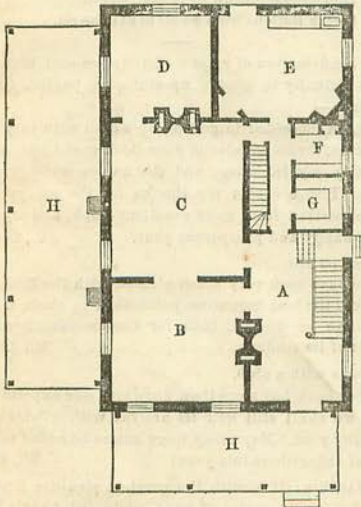
RURAL RESIDENCE IN THE ANGLO-FRENCH STYLE.

Designed expressly for Godey's Lady's Book by SAMUEL SLOAN, Architect, Philadelphia.



THE high curved roof and broad verandas present striking features, a combination of which give a pleasing and picturesque effect. The high roof, though novel in this country, is everywhere seen on those inviting little cottages, and also large villas, with which we meet in France. Though peculiar, they possess many advantages, affording an additional number of chambers without increasing the apparent height of the structure, the beauty of many rural designs being destroyed in this way.

The plan is a parallelogram in form, and very compact,

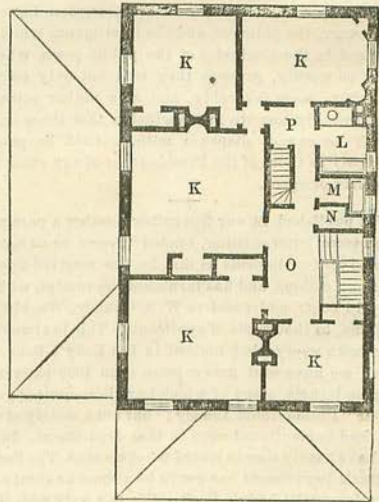


FIRST FLOOR.

affording a large number of rooms, of which A is the hall, with large stairway leading to the second story;

B parlor; C dining-room; D office, or library; E kitchen; F butler's pantry; G store-room; also hall, with private stair.

The second story contains five chambers, K K K; L



SECOND STORY.

bath-room, N wardrobe; each chamber being also provided with wardrobes.

The attic story will contain five chambers, well provided with wardrobes, and lighted from large dormer windows in the roof.

THE best \$3 00 and the best \$2 00 monthly are offered one year for \$3 50. Godey's Lady's Book and Arthur's Home Magazine.