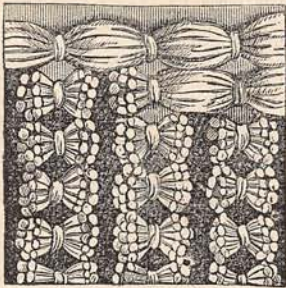


SLIPPER.

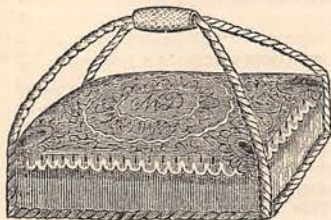


THIS design may be worked as a slipper, or as a foot-muff for a carriage; it is rather a novelty in work. It is made by laying wool on to a piece of cloth, and cutting it at equal distances, by which means it represents a sheepskin mat. You should procure a piece of thick flannel or cloth the size required, and on it mark the shape of the shoe, then frame it. You now require some white and rose-colored single Berlin or fleecy wool. Take several lengths of the wool, at least twelve of single Berlin, and lay it on the cloth in one thick length, and sew down at equal distances with the other colored wool. The detail gives this; these rows are worked together as closely as possible. When they are all finished, half the number of threads laid on should be cut through in the middle of the space left between each of the stitches worked over the wool. The sole of the slipper is formed either of a fleecy and cork sole, or a piece of cloth worked in gray, in the same manner as the top. You then require a border for it. This looks best knitted or crocheted in looped crochet, in a color forming a good contrast to the top. Finish the shoe with a rosette of the same.



DETAIL OF SLIPPER.

WEIGHT FOR A WRITING-TABLE.



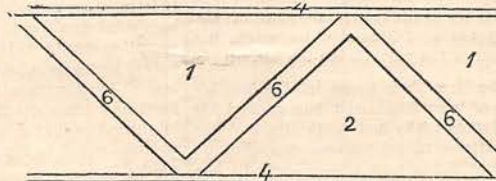
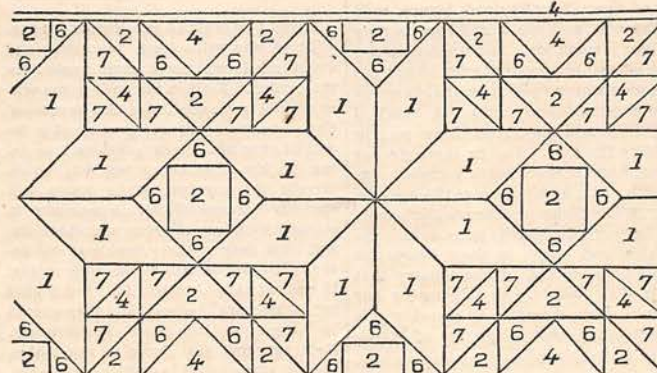
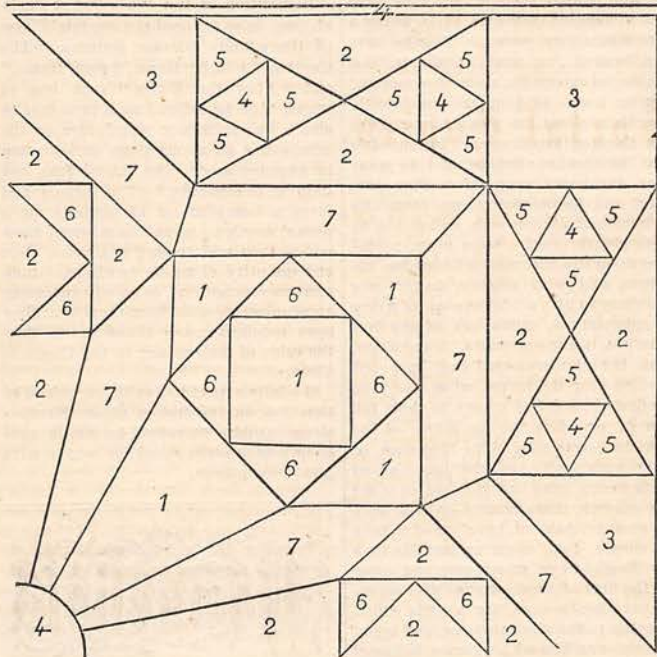
THIS forms a suitable present for a gentleman's writing-table. The top is decorated with Mexican embroidery on black cloth. The sides are covered with velvet, and the cords and tassels are black and scarlet. The inside is lead.

PATTERNS FOR PATCHWORK.

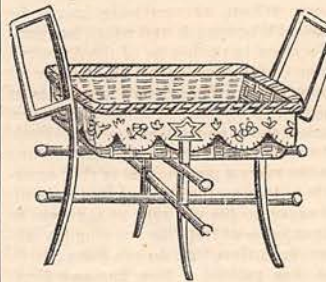
IN our Work-Basket for the present month our readers will find some new patterns for patchwork, two of which are somewhat intricate, but well worth the trouble of working out by those who are enthusiasts in patchwork making.

The three patterns represent the "Star," the "Diamond," the "Triangle;" the latter is very simple.

The numbers represent the colors: red, 1; green, 2; brown, 3; blue, 4; buff, 5; gold, 6; white, 7. The patterns can be enlarged to any size by regulating the proportions. Double the size of the diagram would be a very good rule, and easy to work by.

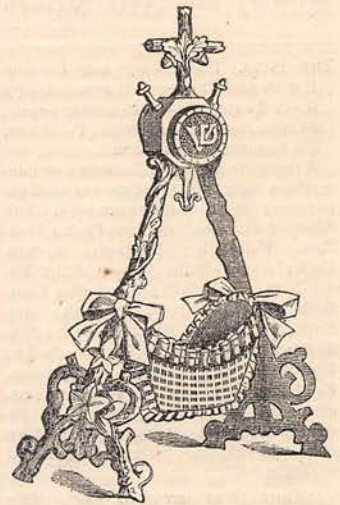


CARD OR LETTER BASKET.

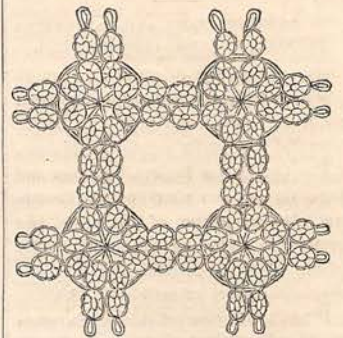


THIS pretty basket is made of fine and white rushes, surrounded with a flap of scarlet cloth, cut out in scallops, and embroidered with black and white silk. The interior may be lined with quilted silk, or it may be left plain, according to fancy.

JEWEL-BASKET.



THIS is one of the prettiest of the new things, and very easily made. The sides are of carved wood (the model was charter oak), but they can be purchased in other grained and suitable woods ready for mounting. The basket is cut out of canvas or perforated card-board, and shaped like a boat. It is lined with blue silk, bordered with narrow quilling of blue ribbon, and tied to the sides with blue ribbon bows. The carved wooden frames that are for sale are the same in style, but not so handsome as this, and destitute of the monogram, which in this model is carved upon the front. It is a very pretty ornament for the parlor.



SECTION FOR ANTIMACASSAR (TATTING).

THIS pattern is worked in stars, which are joined together in rows. Each star is worked with a double row of ovals. The ovals are worked with six double, one purl, six double. Work one first to the right, reverse the work, and work two to the left. The purl stitches on the eight inside ovals are left much longer, and are all joined together. The stars are joined together in squares, as shown in the engraving.