

HONITON LACE SPRIGS IN CROCHET, AND HOW TO MAKE THEM UP.

BY MRS. ANN S. STEPHENS.

As several subscribers have expressed a wish for instructions how to work Honiton Sprigs in Crochet, and also how afterward to make them up, we give, in this number, directions for both. It is not necessary to accompany them with cuts.

NO. I.—MATERIALS.—Evans' Boar's-head cotton, No. 10. Crochet hook, No. 24. Stem, 12 ch.

FLOWER.—27 ch. (that is, 12 for the stalk, 15 for the side petal of flower;) work back on the ch., 1 sl., 1 sc., 2 dc. in 1 chain, 7 tc., 2 dc., 1 sc., 1 sl. along the last 7; 8 loose ch. for second petal. Work on these 1 sl., 1 sc., 1 dc., 2 tc., 2 long tc., * 1 ch., miss 1, 1 dc., * repeat 1 sl., through stem, 7 sl up the side of the open hem. Third petal:—8 ch., 1 sl., 1 sc., 2 dc., 7 tc., 2 dc., 1 sc., 1 sl., through to close the flower; 12 sc. down stalk; 12 ch. for stem.

BUD.—21 ch., join in 11th for loop. Work round in dc., except first and last stitches, which must be *single*. Close with 1 sl., 10 sc. down the stem, then repeat the flower; work 6 sc. on stem, and repeat the Bud; 12 sc. on the stem; repeat the Flower, 12 more sc. on the stem, repeat the Bud; 6 sc. on the stem, fasten off.

NO. II.—(This sprig is extremely easy to work, and is very pretty for a collar or similar article; or for sprigging the full part of Bishop's sleeves.)

16 chain for stem.

FLOWER.—16 ch., close for centre loop on 7th, and work round in sc., * 9 ch., 1 dc., through every alternate of last round * (4 times,) 9 ch., 1 sl., through stem. Work round in sc., missing every dc., 1 sl., through stem; 6 sc., on stem, 12 ch.

CLOSE LEAF.—12 ch, 11 sl. on ch., for the centre fibre; work on each side of this 1 sc., 2 dc., 5 tc., 2 dc., 1 sc. Observe to take up the stitches from the back in working the 2nd side, which leaves an appearance of chain-work down the centre. Finish leaf with a slip-stitch; 6 ch., for stem.

NO. III.—REPEAT Flower 6 sc., on stem; Leaf 12 sc., on stem; repeat Flower 12 sc., on stem; repeat Leaf: work 10 sc., on stem; fasten off.

16 ch., close for loop in fifth, and work round in sc.; 10 ch. for Stem.

FLOWER.—8 ch., on which work 1 sc., 5 dc., 1 sc. 1 sl.; 10 ch., dc., on sixth, 2 ch., miss 2 dc., on third, 2 ch., miss 2, sl. on first. Work round in dc., except the first and last stitches, which must be sc.; making three stitches in 1 ch. at the point, and closing firmly with a slip stitch 8 ch., miss 1, 1 sc., 5 dc., 1 sl., 5 sc., on stem; work a loop like the first, and finish with sc. down the stem.

On completing a sprig, draw the thread through the last stitch, and cut it off, leaving enough to run a few stitches up and down the back of the flower. Do the same with the thread you began with, and cut them off closely.

NO. IV.—MAY be used either as a sprig or edging; in the latter case, the sprigs must be laid on the net, side by side, so as to touch each other.

16 ch., miss 1, slip 11 (leaving 4 for stem:) work round the vein in sc.

12 ch. for stem.

FLOWER.—14 ch.; close in 1st for a loop, which sc. all round, x, 7 ch., dc. through every alternate ch. of last round, x 6 times, 7 ch., slip at the stem. Work each loop thus:—2 sc., 3 dc., 2 sc.; do not work with the stitch at all, and close, very strongly, with a slip stitch at the stem.

Work 4 sc. on the chain of the stem.

Repeat the Leaf as before, then 4 more sc. on stem.

AN OPEN LEAF.—17 ch., close in the first, for a loop, and work round with 1 sc., 6 dc., 3 dc. in centre one, 6 dc., 1 sc. Close with a slip stitch, and work the remainder of the stem in sc.

TO MAKE-UP HONITON SPRIGS.—Make each sprig quite complete in itself; and that they may not be lost, tack them on a piece of colored paper, until you have done as many as you will require. Cut out in bright-colored paper the full-sized shape of the article to be made; and if your foundation is to be of net, cut the same a little larger in the best Italian net, taking care that it has been already shrunk. Tack it on the paper, turning the edge over on the *right* side; arrange the sprigs on it in tasteful order, and run them on with very fine cotton.

If any of the point lace stitches are used as a foundation, either in English or *open* English foundation, place the sprigs on the paper pattern, lace. In this case, the paper should be pasted tack them down rather firmly, and work the on calico.

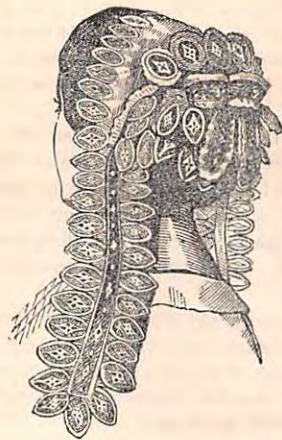
LATEST NOVELTIES FROM PARIS.



THE VENITIAN BASQUE.



MORNING CAP.



DRESS CAP.